



# morton.

**Sydney** 364/298 Sussex Street

 2  3  2

Occupying a prime north aspect with sweeping city views, this spacious split level apartment is flooded in natural light through floor to ceiling glass sliding doors. Located in the highly sought after 'Maestri Towers', this residence provides an idyllic opportunity for the discerning buyer who enjoys luxurious city living or the astute investor looking for an excellent rental return opportunity.



- North facing with 180 degree views from levels 23 & 24
- Light-filled, well proportioned open plan lounge and dining
- Spacious kitchen with granite benchtops and gas appliances
- Generous master bedroom with ensuite, built-ins and breathtaking views
- Air-conditioning, video intercom, large internal laundry
- Two large car spaces, separate 5sqm storage
- Pet friendly, subject to approval
- Facilities include a pool, gym, spa and concierge

### View



As advertised or by appointment

### Agents

#### Ettiene West

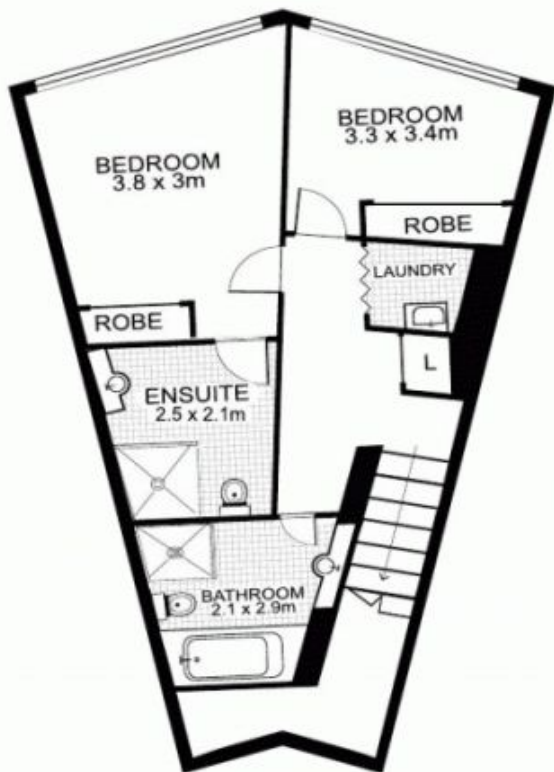
 0410 593 749  
 ettiene@morton.com.au

#### Emma Ryan

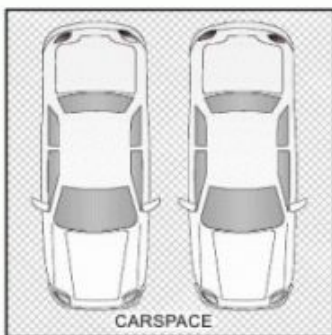
 0409 325 440  
 emmar@morton.com.au

[morton.com.au](http://morton.com.au)

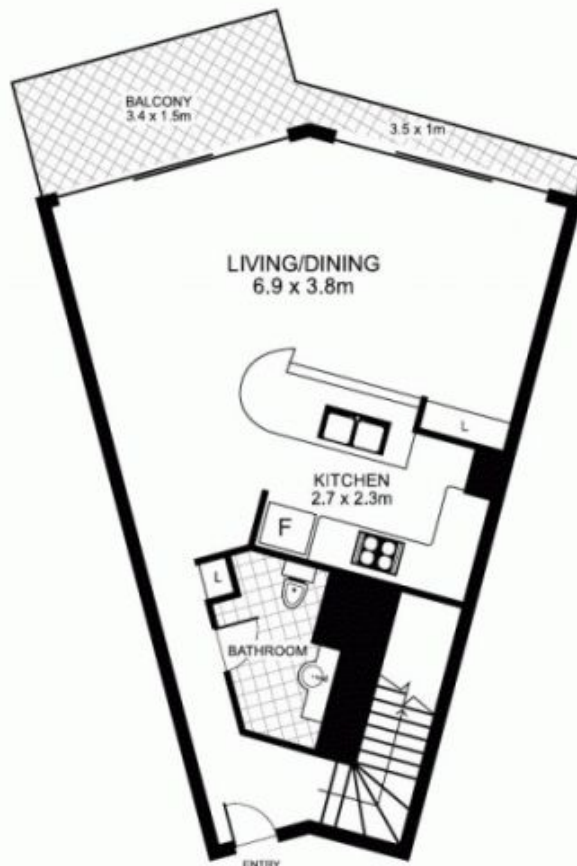
# 364/298 Sussex Street, SYDNEY



UPPER LEVEL



CARSPACE



LOWER LEVEL



NORTH

morton.

This floor plan is intended as a guide only. Layout dimensions are approximate only. No representations or warranties of any nature whatsoever are given or intended. Any person using this information should rely on their own enquiries