



morton.

Ryde 204W/261 Morrison Road

🛏 2 🚿 2 🚗 1

Displaying a fresh contemporary style with beautiful landscaped outlooks, this ultra-modern security apartment provides a tranquil executive retreat with designer finishes and a generous indoor-outdoor layout. It combines bright airy interiors and a sleek modern design to deliver an excellent low-maintenance home in the luxury 'Frasers' building in the highly sought-after 'Putney Hill' estate.

- Ideal northerly aspect and a light filled open plan living area
- Beautiful outlooks over the building's lush landscaped gardens
- Seamless interaction with a large loggia entertainment terrace
- Two double bedrooms both have access to a second balcony
- Designer kitchen with quality gas fittings and great storage
- Full bath ensuite, modern bathroom and internal laundry
- Security car space plus lock-up storage, intercom and lift access

View

As advertised or by appointment

Agents

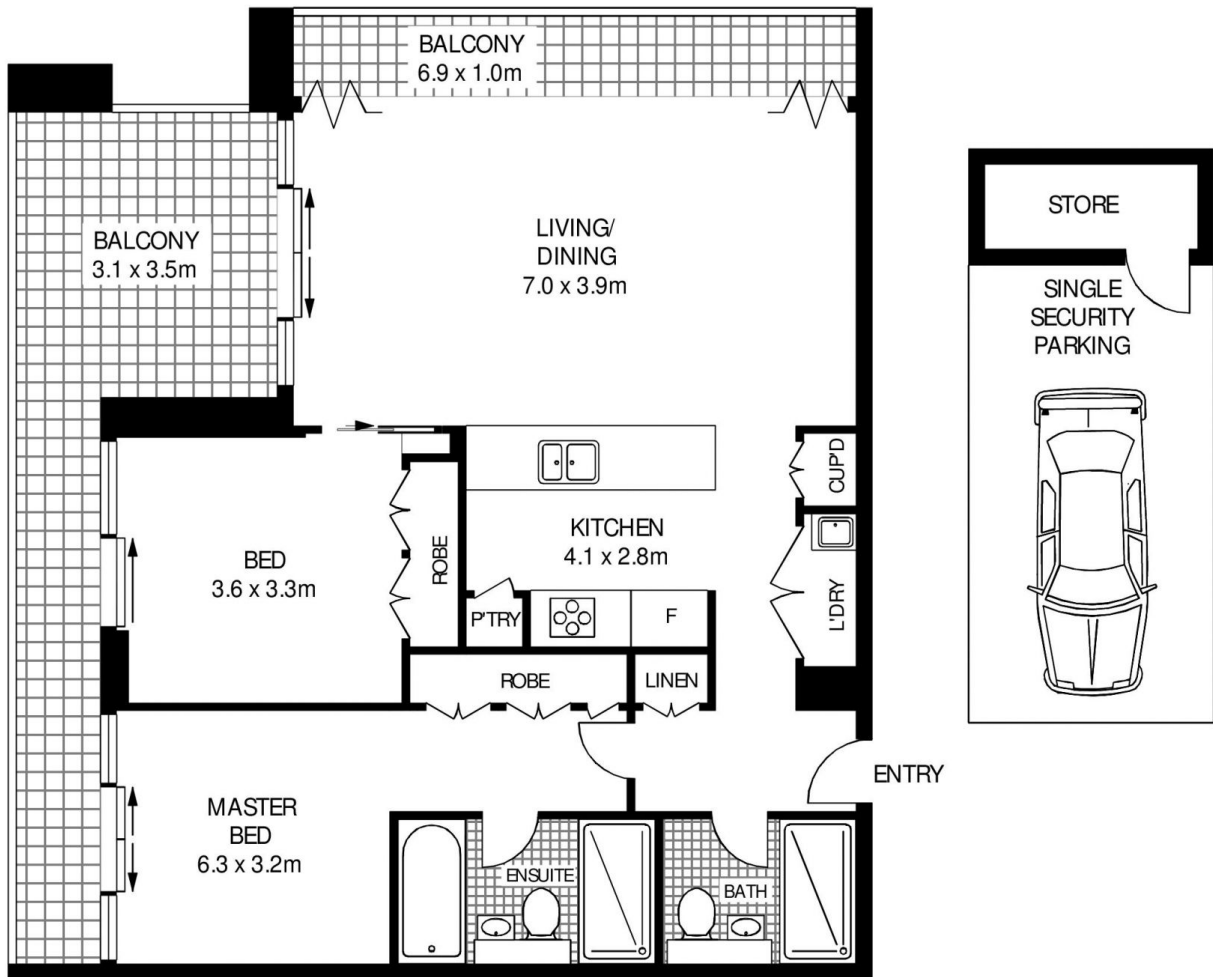
Ian Qiu

📞 0447 696 425
✉ ian@morton.com.au

Natasha Giannone

📞 0438 683 859
✉ natasha@morton.com.au

morton.com.au



LEVEL 2



204W/261 MORRISON ROAD

RYDE

SCAPE Floor Planning Disclaimer: This floor plan is conceptual only. It is provided for illustrative purposes only and should not be relied upon. We make no guarantee as to the correctness of this plan. All interested parties should make and rely on their own enquiries in determining the accuracy of the information contained in this floor plan.