



**morton.**

**Wentworth Point** H10132/19 Amalfi Drive

 2
  2
  1

#### View

As advertised or by appointment

#### Agent

**Nevena Petrovic**

 0428 835 910

 [nevena@morton.com.au](mailto:nevena@morton.com.au)

Located in one of the finest and newest developments in Wentworth Point, One The Waterfront, this two bedroom apartment offers a unique luxury lifestyle with high end facilities to entertain year round while maintaining the ambiance of that relaxed lifestyle you've always wanted. Within easy access to transport services to Rhodes, Parramatta and Circular Quay, you'll be stones throw away from local eateries, shops, and amenities with The Piazza, The Promenade, Marina Square and Pierside just moments away.

- Generous open plan design with latest in décor finishes
- Entertainer's alfresco balcony
- Designer kitchen with Bosch built- in appliances
- Spacious carpeted bedrooms with built-in wardrobes
- En-suite in main bedroom
- Internal laundry with clothes dryer
- Split system air-conditioning
- Secure basement parking
- Audio-video intercom access

**morton.com.au**

BUILDING  
ONE H



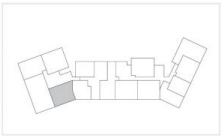
Disclaimer: This plan is a guide only and does not constitute an offer or contract. Please note changes may be made during the development and areas, fittings, fixtures and specifications are subject to change without notice in accordance with the terms of the contract of sale. All parties must rely on their own investigation to validate this information as it is not guaranteed. No liability will be accepted for any inaccuracy misstatement. (Date Issued 01/04/16 D)

ONE  
THE WATERFRONT

APARTMENT | LOT  
**10132 | 53**

2 Bed + 2 Bath

INTERNAL 81m<sup>2</sup>  
EXTERNAL 10m<sup>2</sup>  
**TOTAL 91m<sup>2</sup>**



BUILDING ONE H LEVEL 10

1300 865 465 onethewaterfront.com.au

DEVELOPED BY

PIETYTHP

SALES BY

LINK