



morton.

Cambridge Park 15 Rule Street

 4  1  4

This four bedroom home, situated in the heart of Cambridge Park, is the perfect summer entertainer. Located close to Cambridge Park Public and High school, shops and transport, this spacious family home is sure not to be missed!

- Four bedrooms (one split from the main)
- Pergola entertainment area
- In ground swimming pool
- Low maintenance yard
- Tandem lock up carport
- Split cycle aircon
- Garden shed
- Bathtub

View

As advertised or by appointment

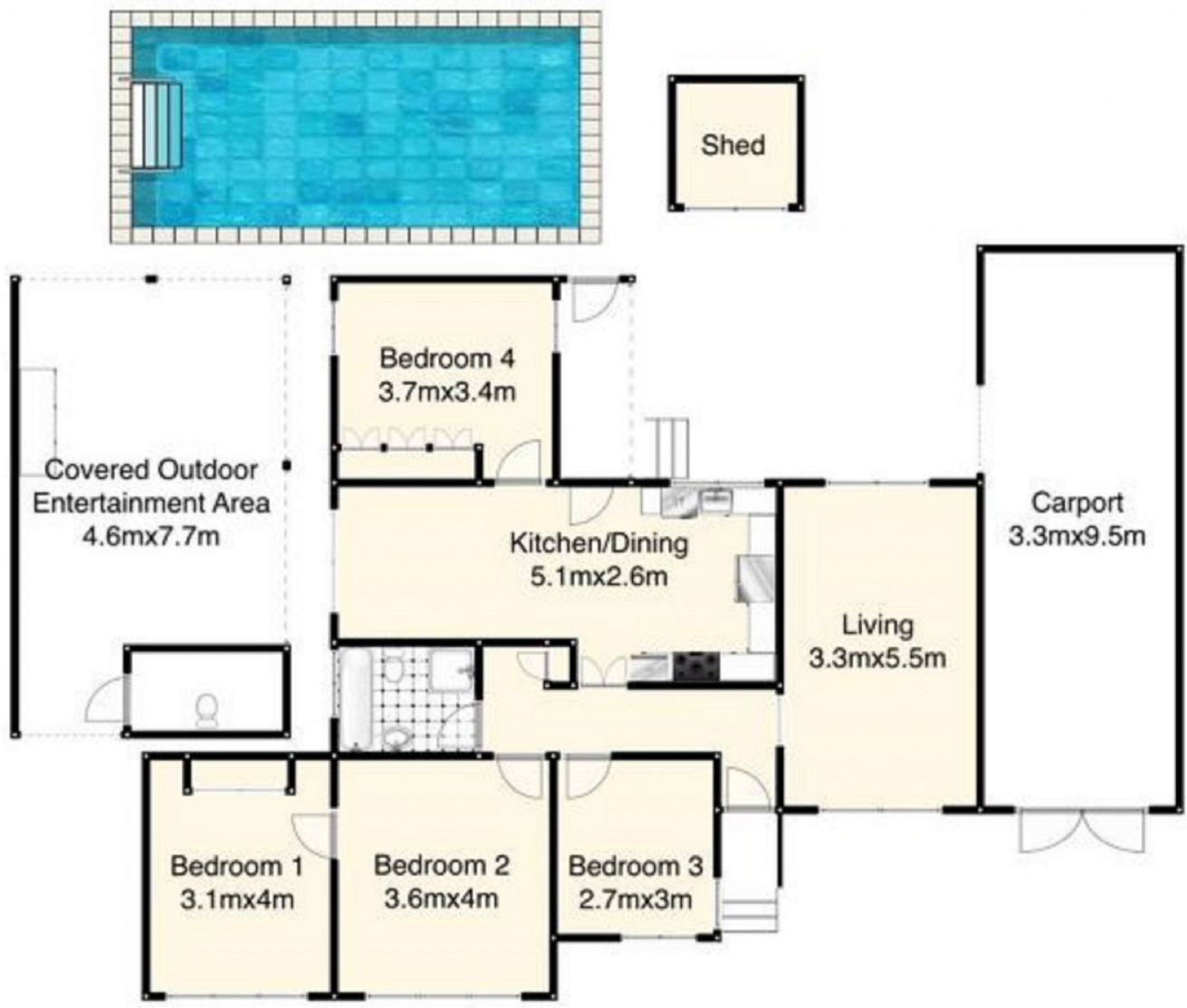
Agent

Amy Torbarina

 0438 977 172

 amy@morton.com.au

morton.com.au



Scale shown in metres. All dimensions herein are approximate and gathered from sources believed to be reliable. Whilst every effort is made for the accuracy of our floor plans, interested parties should rely on their own enquiries.