



# morton.

**Wentworth Point** 104/27 Bennelong Parkway

🛏 2 🛋 1 🚗 1

Well positioned in the Spinnaker building of the Mariners Cove complex, this well maintained two bedroom apartment has an abundance of natural light. Sitting right above the Parramatta River, you'll be residing in the perfect sanctuary while still conveniently located for all work and lifestyle needs.

- Covered entertainer's balcony
- Second bedroom with built-in custom study desk
- Both bedrooms with built-in wardrobes
- Modern blinds & sunscreen blinds
- Air conditioning
- Timber flooring throughout
- Tastefully renovated kitchen with a farmhouse style sink & stainless steel appliances
- Internal laundry room with dryer
- Generous secure basement car parking
- Residents only access to private beach, pool, gym, and sauna

## View

As advertised or by appointment

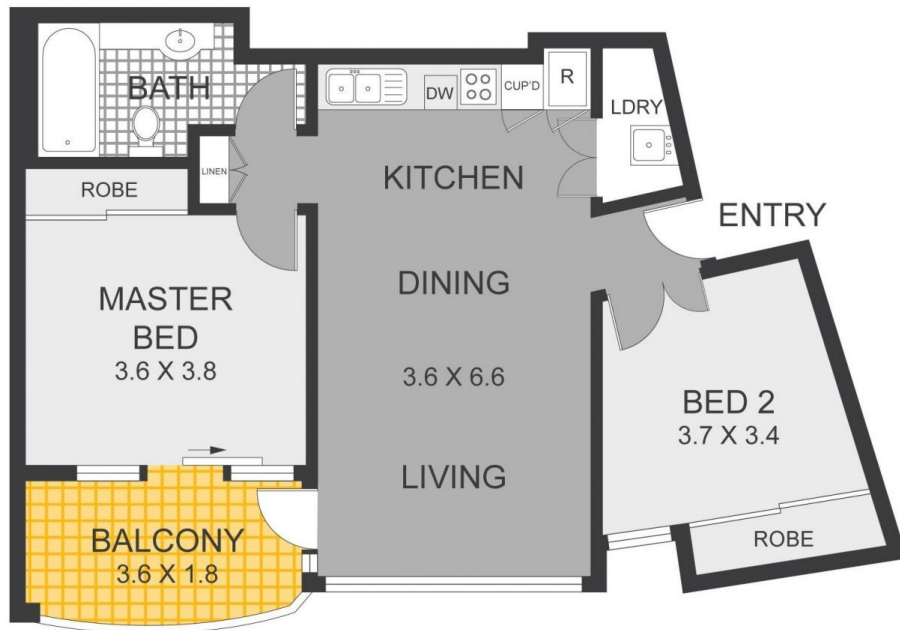
## Agent

**Nevena Petrovic**

📞 0428 835 910

✉ nevena@morton.com.au

**morton.com.au**



GROUND FLOOR



APPROXIMATE AREAS	
Internal incl. balcony	68 sqm
Carspace	22 sqm
Total Area (sum of ALL)	90 sqm

## WENTWORTH POINT

104/27 Bennelong Parkway

DISCLAIMER: Plans shown are for presentation purposes only and are not part of any legal document or title. They are subject to errors, omissions, inaccuracies and should not be used as a sole and accurate reference. Interested parties should make their own inquiries using independent sources.