



# morton.

**Wentworth Point** 104/21 Hill Road

 2  2  1

Featuring the size, privacy and exclusivity of a house, this supremely large courtyard residence offers a stylish modern home that is big on space and filled with sleek designer appointments. Its light-filled interiors provide an expansive single-level layout, a great sense of seclusion and the low-maintenance convenience that comes with living in this sought-after Waterfront Estate community.

- Featuring a generous 210sqm of indoor/outdoor living area
- Spacious open plan design and an easy flow to the outside
- Extra-large 115sqm courtyard with private alfresco spaces
- Two peaceful bedrooms are both fitted with mirrored built-ins



- Quality gas kitchen with stone benches and s/steel appliances
- Security car space plus a lock-up storage cage on title
- An elevated position with own entrance from Hill Street
- Residents' access to the pools, tennis court and Pulse Club

### View


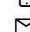
As advertised or by appointment

### Agents

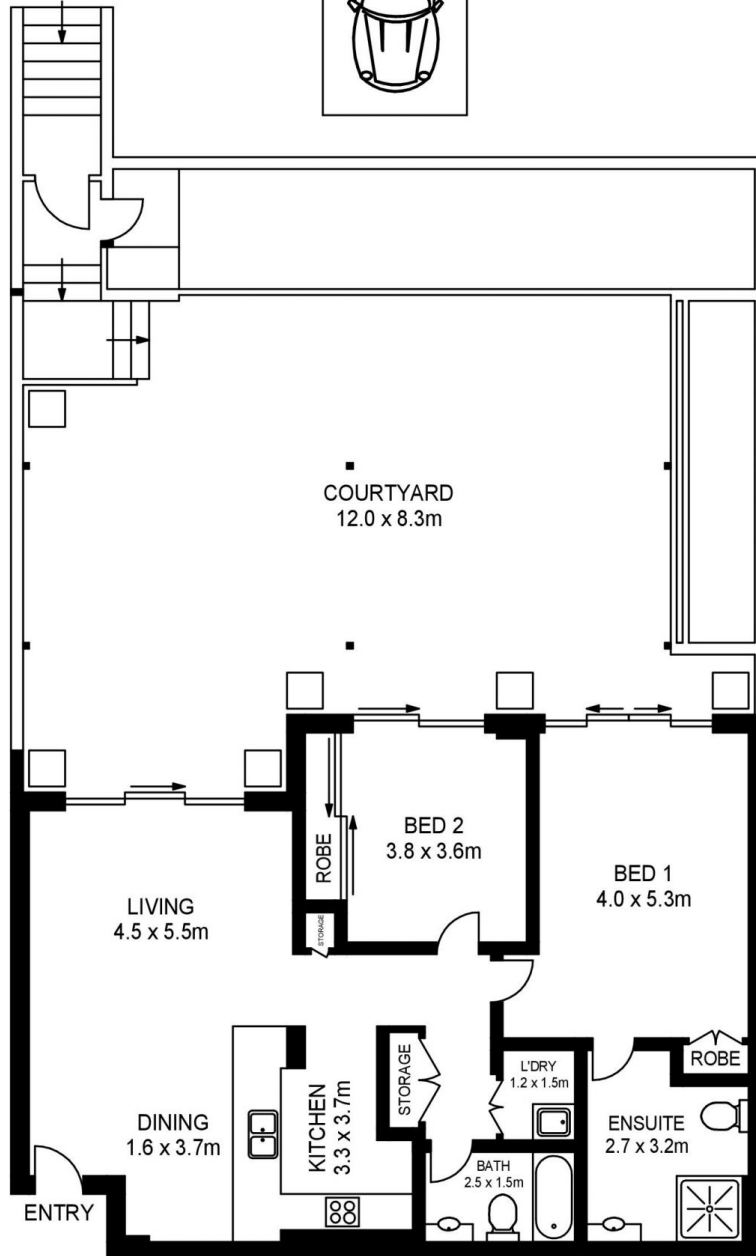
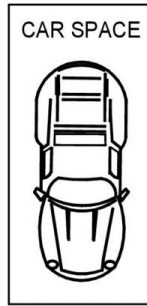
#### Dylan Choe

 0416 932 977  
 [dylanchoe@morton.com.au](mailto:dylanchoe@morton.com.au)

#### Akanksha Chaudhari

 0447 201 786  
 [akanksha@morton.com.au](mailto:akanksha@morton.com.au)

[morton.com.au](http://morton.com.au)



## 104/21 HILL ROAD, WENTWORTH POINT



[www.assetphotographers.com.au](http://www.assetphotographers.com.au)

Please note these measurements are approximate only. The plans is intended as a rough guide for illustrative purpose. It is not warranted or guaranteed to be correct nor it is part of the sale or rental contract