



morton.

Pymont 410/320 Harris Street

🛏 2 🚿 2 🚗 1

In an exclusive central community complex, this surprisingly quiet split level New York loft style apartment presents a cutting-edge lifestyle. Impeccably styled throughout with no attention to detail spared, this historic warehouse conversion offers flawless designer living ideal for the inner city professional or investors alike.

- Bright and cleverly configured to maximise space
- Vast manicured roof garden stretches over 2800sqm
- Spacious double bedrooms with built-in wardrobes
- Combined liv/dining with soaring dual level ceilings
- Contemporary bathrooms. Main with dual basis and tub
- Low maintenance sun washed entertaining courtyard
- Fisher and Paykel gas kitchen, CaesarStone benches
- Polished floors, Euro laundry, ducted air conditioning
- Onsite building manager, lift access and intercom
- Same level access to lock up secure carspace and separate storage

View

As advertised or by appointment

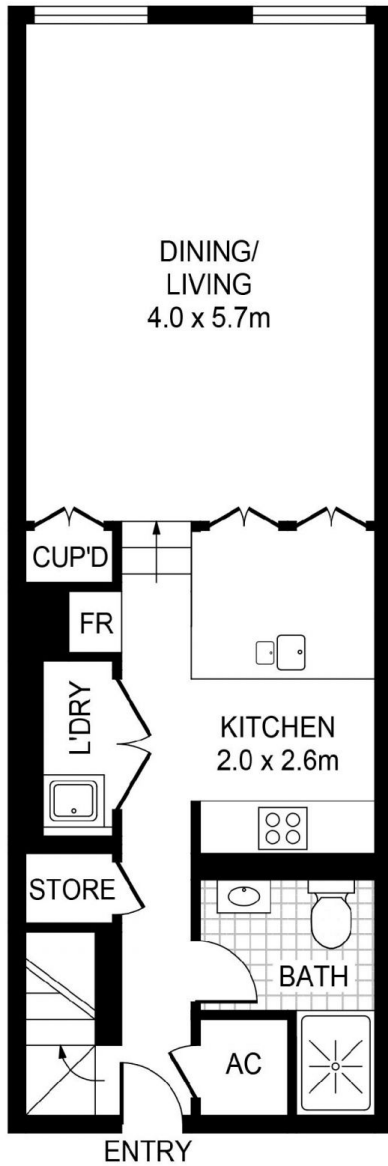
Agent

James Crow

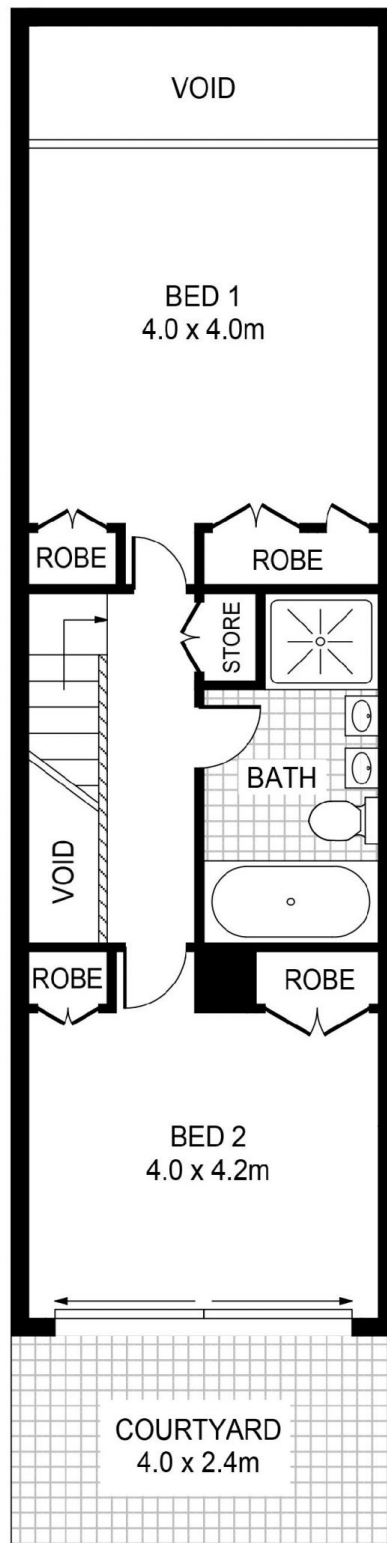
📞 0410 593 057

✉ james@morton.com.au

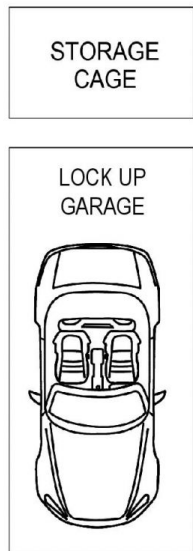
morton.com.au



GROUND FLOOR



FIRST FLOOR



PLANS SHOWN ONLY INDICATIVE OF LAYOUT. DIMENSIONS ARE APPROXIMATE.



PYRMONT 410/320 Harris Street

morton.