



**morton.**

**Zetland** 312/17 Joynton Avenue



Wonderfully positioned in the bustling precinct of Victoria Park, the famous 'Emerald Park' apartments provide a new level of living. This luxurious one bedroom apartment offers split-level layout with spacious lounge downstairs and sun-drenched bedroom upstairs. The open plan living and dining areas flow out onto an oversized balcony with views. The unit features contemporary design and quality features.

- Oversized bedroom with built in robe
- Integrated modern kitchen with stainless steel appliances
- Dishwasher, oven and gas cooking
- Luxury bathroom with floor to ceiling tiles
- Polyurethane finish joinery with ample storage
- Internal laundry with dryer
- Intercom, broadband and Foxtel connection
- A resort beach pool and BBQ area with outdoor spa
- Study
- Storage cage

**View**

As advertised or by appointment

**Agents**

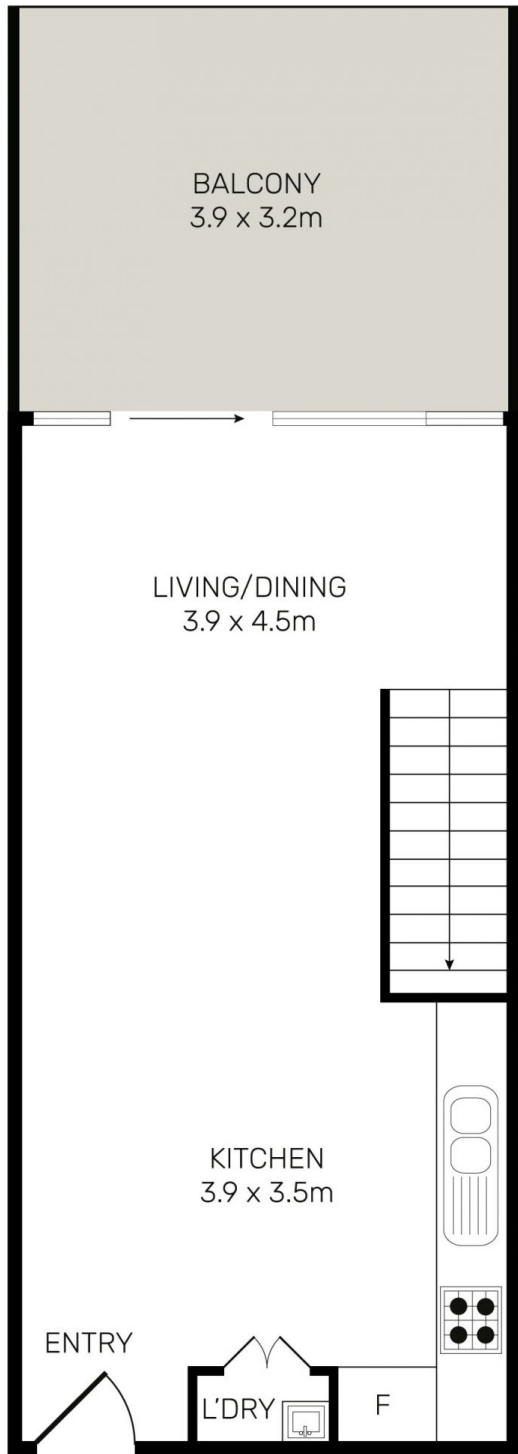
**Calvin Chan**

- ☎ 0406 888 028
- ✉ calvin@morton.com.au

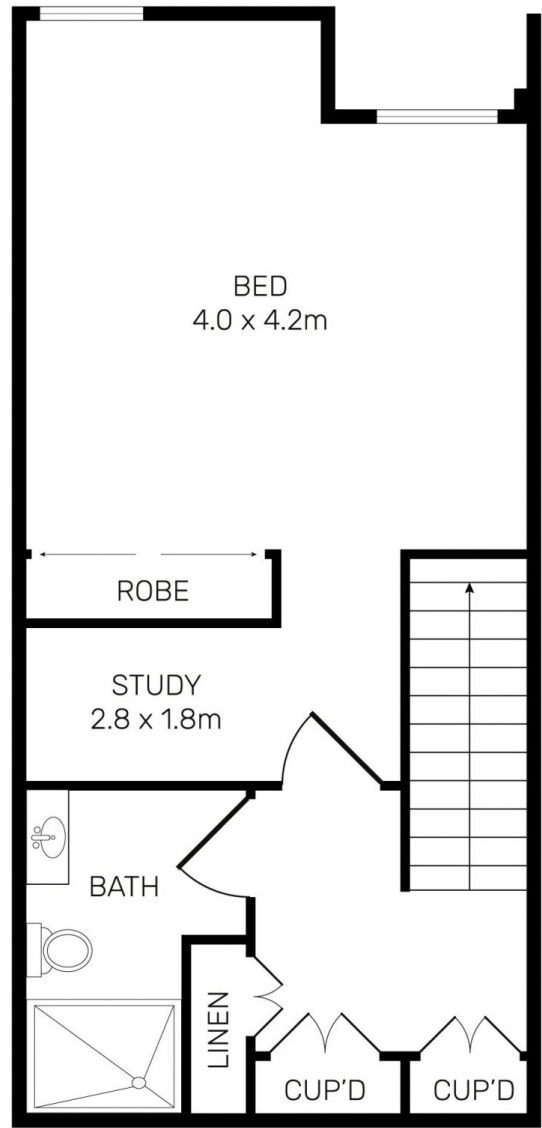
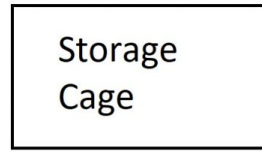
**Jackson Figueiras**

- ☎ 0448 764 345
- ✉ jackson@morton.com.au

**morton.com.au**



GROUND LEVEL



LEVEL 1



All information contained herein is gathered from all sources we believe to be reliable. However we cannot guarantee its accuracy and interested parties should rely on their own enquiries.



CampaignPROS