



**morton.**

**Melrose Park** 201/2D Wharf Road

🛏 1 🚿 1 🚗 1

Spacious and bright interiors delivered with a smart modern style define this generously proportioned single-level apartment. Set within the architectural Melrose Park North building, it offers a fresh and easycare property and provides a great escape from Sydney's fast-paced city life with relaxing outlooks over the treetops.

- Large open and airy living space with crisp modern décor
- Enclosed north-facing balcony capturing elevated leafy views
- Good-sized double bedroom has access onto the balcony
- Sleek and modern kitchen with gas fittings and dishwasher
- Separate media area/home office plus a designer bathroom
- Air-conditioning, intercom entry and an internal laundry
- Level lift access to a basement car space and storage cage
- Residents' access to a shared rooftop garden for entertaining

#### View

As advertised or by appointment

#### Agents

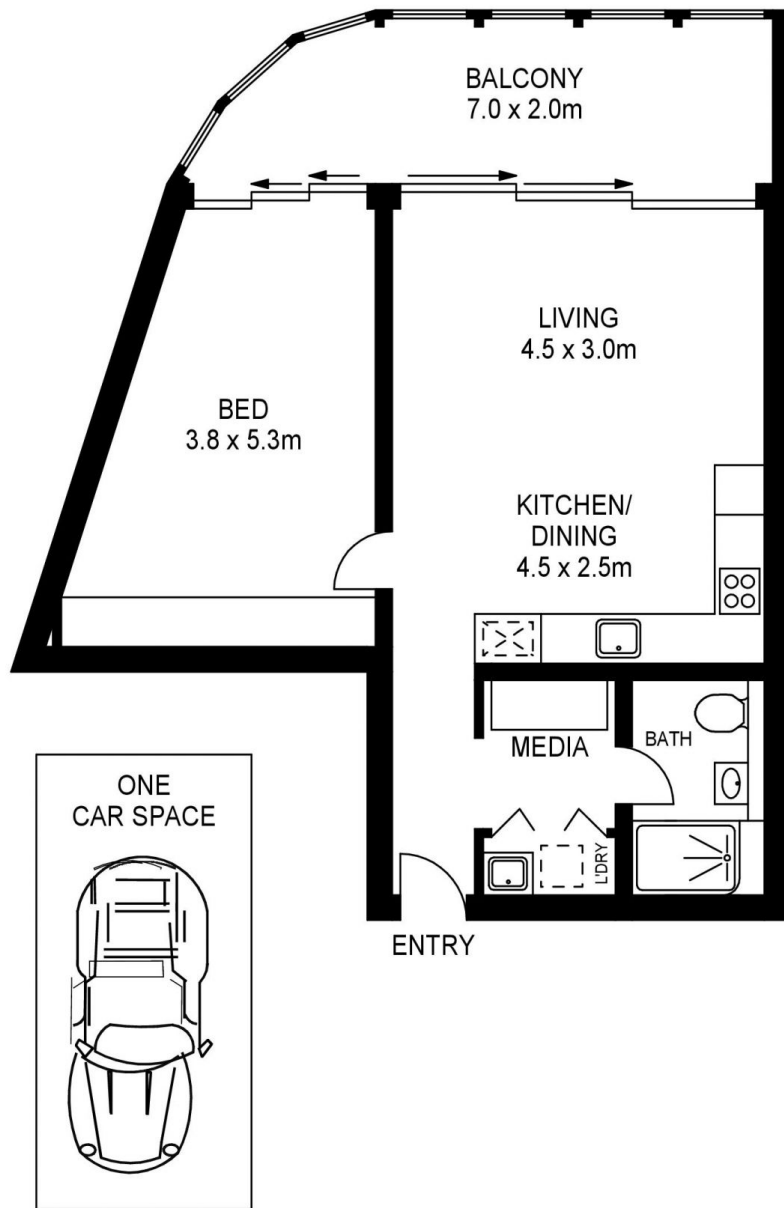
##### Dylan Choe

📞 0416 932 977  
✉ dylanchoe@morton.com.au

##### Akanksha Chaudhari

📞 0447 201 786  
✉ akanksha@morton.com.au

**morton.com.au**



## 201/2D WHARF ROAD, MELROSE PARK



[www.assetphotographers.com.au](http://www.assetphotographers.com.au)

Please note these measurements are approximate only. The plans is intended as a rough guide for illustrative purpose. It is not warranted or guaranteed to be correct nor is it part of the sale or rental contract