



morton.

Pyrmont 1202/2 Mount Street Walk

 3  3  2

Set against a magnificent city backdrop with mesmerising views to the skyline, Harbour Bridge and everything in between, this custom and re-created dual level penthouse bares all the hallmarks of luxury living. It occupies a premium position in the northeast corner of Jacksons Landing's 'The Elizabeth' building and showcases a size rarely found in apartment living with an expansive 418sqm of space on title.

- A private security lift opens directly into the living room
- Intuitively reimagined by the renowned Stanic Harding
- Beautifully renovated and finished with the finest inclusions
- Floor-to-ceiling walls of glass that highlight the panoramas
- A flowing and light-filled open design for living and dining
- Large entertainment balcony plus a private rooftop terrace
- Expansive master suite, deluxe ensuite and balcony access
- Chef's island kitchen fitted with premium Miele appliances
- Double lock-up garage plus a storeroom in the basement
- Ducted air-conditioning, video intercom and excellent storage

- Access to Jacksons Landing's pools, gyms and tennis courts

View



As advertised or by appointment

Agents

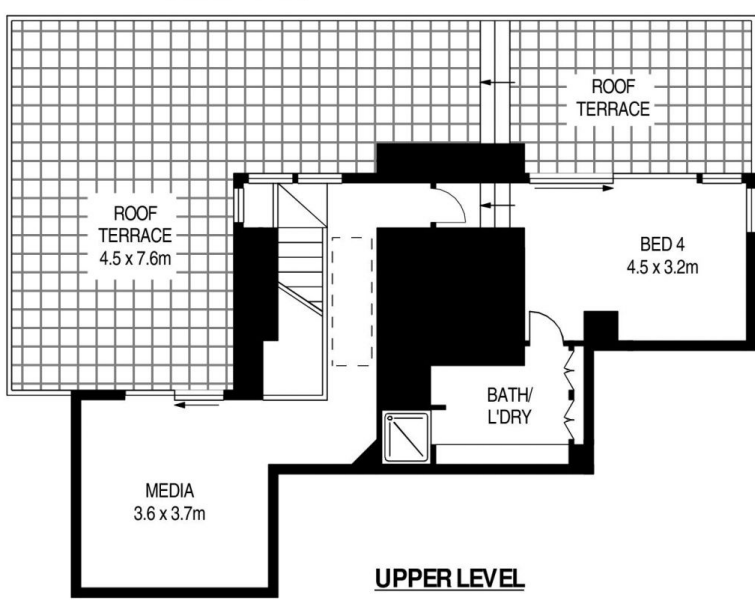
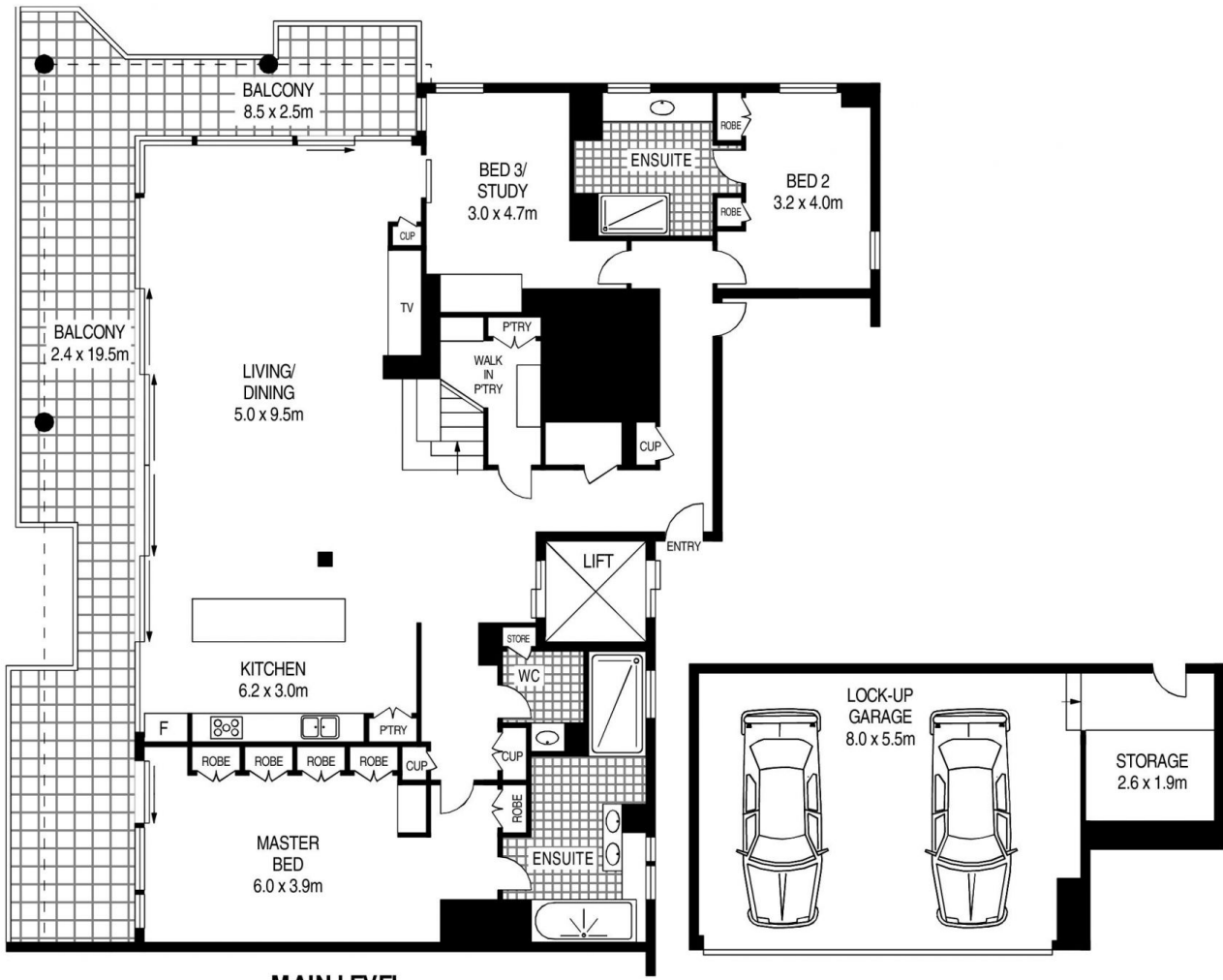
Ian Qiu

 0447 696 425
 ian@morton.com.au

Natasha Giannone

 0438 683 859
 natasha@morton.com.au

morton.com.au



1202/2 MOUNT STREET WALK

PYRMONT

SCAPE Floor Planning Disclaimer: This floor plan is conceptual only. It is provided for illustrative purposes only and should not be relied upon. We make no guarantee as to the correctness of this plan. All interested parties should make and rely on their own enquiries in determining the accuracy of the information contained in this floor plan.