



morton.

Surry Hills 606/1 Poplar Street

1 1 1

In a lively & highly sought-after locale, this stunning one bedroom apartment boasts an abundance of natural light and space. Set over two levels in 'Manhattan', this New York style loft residence's soaring ceilings and generous proportions create a superb offering of low maintenance luxury in an idyllic cosmopolitan setting.

- New York style split level living with a Northern aspect
- Bright, open living space with double height central windows
- Spacious bedroom with built-in wardrobe
- A smartly appointed kitchen with gas appliances
- Modern bathroom w/ tub, air-con, Internal laundry
- Secure car space with lock-up storage cage
- Gym, sauna, secure intercom entry & lift access

View

As advertised or by appointment

Agents

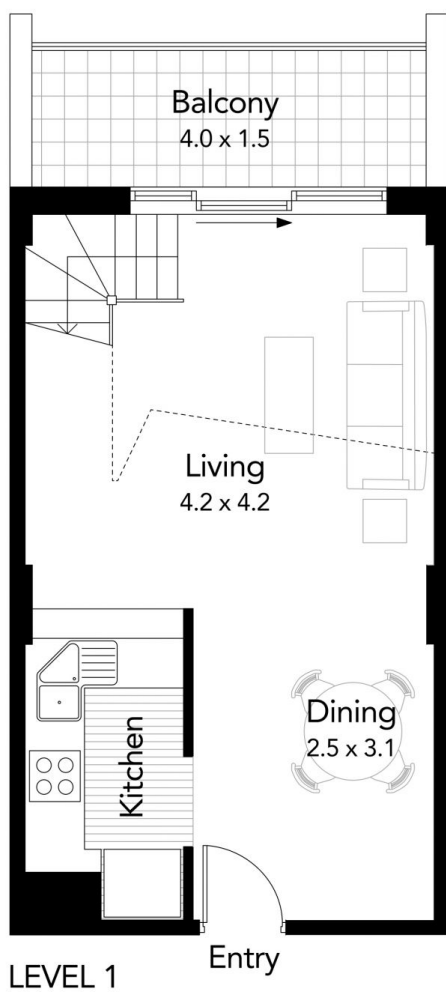
Ettiene West

0410 593 749
ettiene@morton.com.au

Emma Ryan

0409 325 440
emmar@morton.com.au

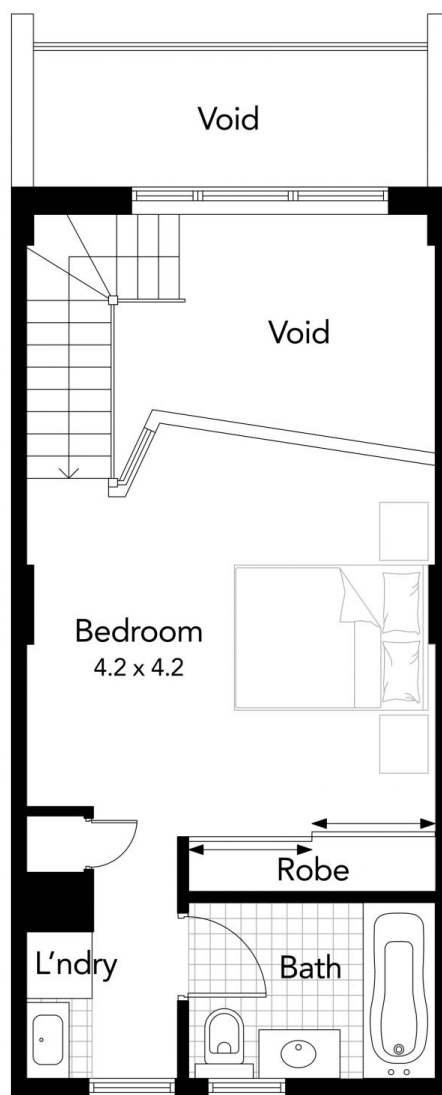
morton.com.au



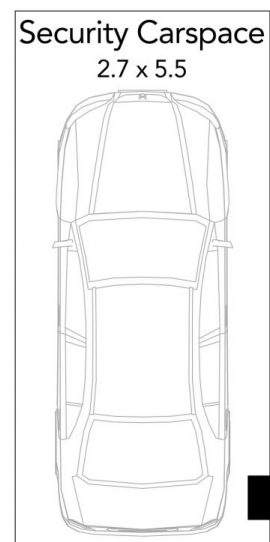
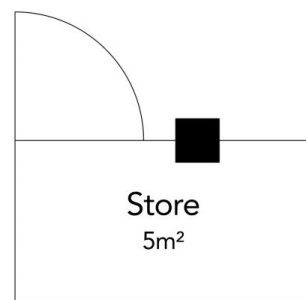
LEVEL 1



Apartment size: 62m² approx.
 Parking and store: 20m² approx.
 Total: 82m² approx.



LEVEL 2



morton.

Plans shown are for presentation purpose only and are not part of any legal document or title. They are subject to errors, omissions, inaccuracies and should not be used as a sole accurate reference, interested parties should make their own inquiries using independent sources.