



# morton.

**Penrith** D920/1-39 Lord Sheffield Circuit


 2 
  2 
  1

## View

As advertised or by appointment

## Agent

**David Lipman**

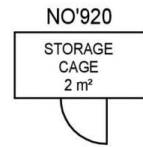
 0409 663 535

 david@morton.com.au

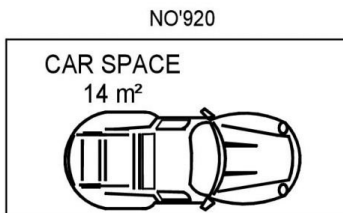
For those on the lookout for a superb lifestyle and location package, this well-proportioned security apartment offers a great urban home. Smartly designed to give it a fresh modern feel, featuring a bright and low-maintenance layout. All this and a top location in Thornton Estate's sought-after Harts Landing building that is literally footsteps to the heart of Penrith.

- Top floor apartment with a pleasant north easterly view of the mountains
- Split system air con in the living room, porcelain-look timber tiles in living
- Open-plan living and dining with good sized balcony off the living area
- Carpet to both bedrooms and walk in robe and ensuite to the master
- Large island bench in kitchen with Omega appliances including dishwasher
- NBN ready, Data/TV/PayTV points in the living & bedroom
- Secure car space and storage cage in the basement, lift

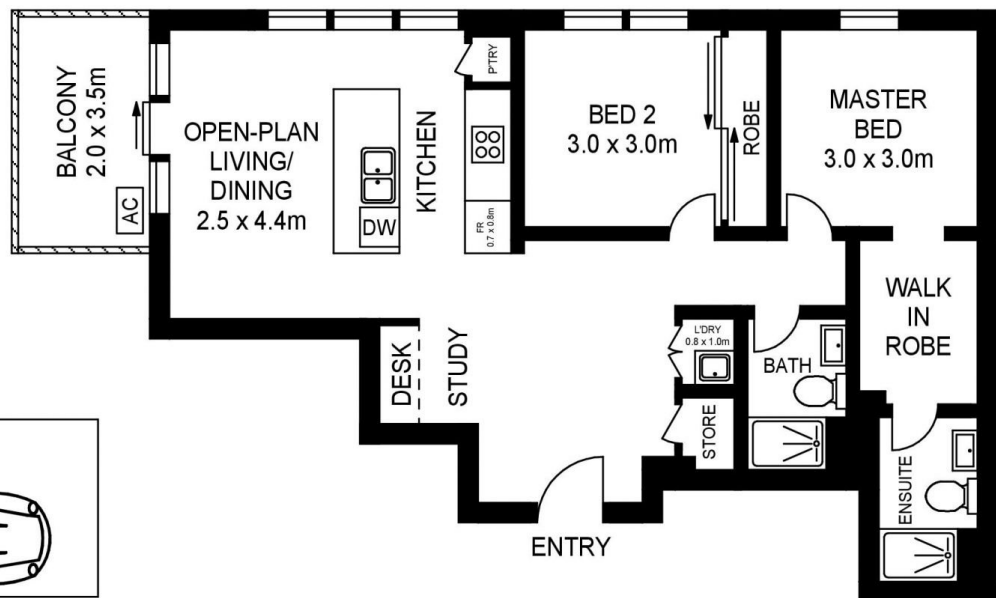
**morton.com.au**



**BASEMENT**



**BASEMENT**



**LEVEL NINE**

APPROX. INT. AREA	:	72 m <sup>2</sup>
APPROX. EXT. AREA	:	7 m <sup>2</sup>
TOTAL AREA INCLUDING CAR SPACE AND STORAGE CAGE	:	95 m <sup>2</sup>

**D920/1-39 LORD SHEFFIELD CIRCUIT, PENRITH**



[www.assetphotographers.com.au](http://www.assetphotographers.com.au)

Please note these measurements are approximate only. The plans is intended as a rough guide for illustrative purpose. It is not warranted or guaranteed to be correct nor it is part of the sale or rental contract