



morton.

Zetland 701/28 Ebsworth Street

 2  2  1

Showcasing all the quality and the excellence of its Mirvac standard, this picture perfect luxury two bedroom positioned quietly towards the North East of the development with city views.

- Generous open plan living and dining extends to the large entertainer alfresco balcony
- Security building with architectural common spaces, vertical gardens and lift access
- Extra high shadow line ceilings to ensure the spacious interiors are bathed in natural light
- Full-sized kitchen, glass splashback and large amounts of storage
- Quality stainless steel gas appliances (oven, dishwasher, rangehood & microwave), double sink and stone breakfast bench
- Spacious bedroom suites with robes, luxurious master with ensuite and city views
- Beautiful main bathroom with mirror cabinet & designer wall tiles

View



As advertised or by appointment

Agents

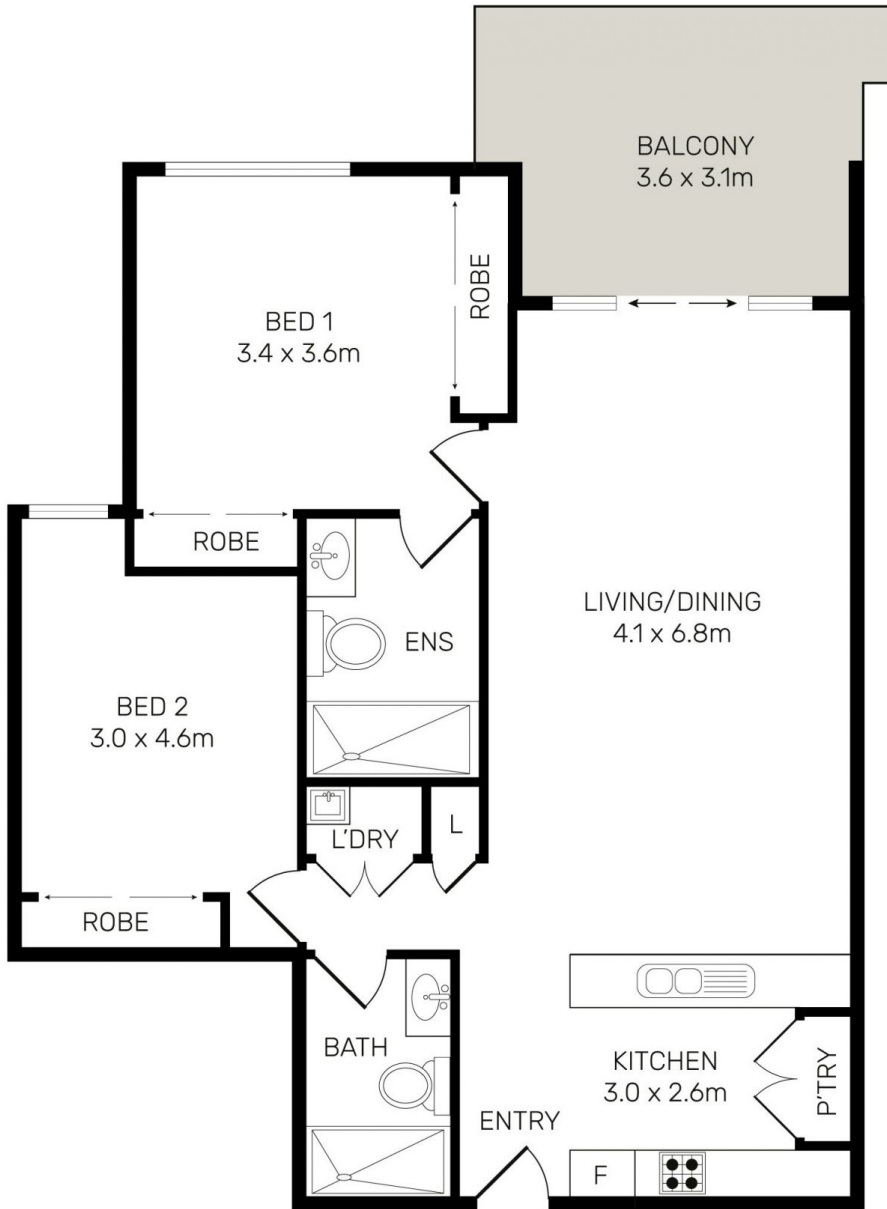
Calvin Chan

 0406 888 028
 calvin@morton.com.au

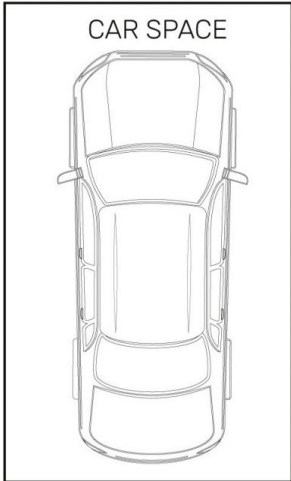
Jackson Figueiras

 0448 764 345
 jackson@morton.com.au

morton.com.au



Storage
Cage



All information contained herein is gathered from all sources we believe to be reliable. However we cannot guarantee its accuracy and interested parties should rely on their own enquiries.



CampaignPROS

morton.

Zetland 701/28 Ebsworth Street