



# morton.

**Wentworth Point** 603/45 Hill Road

🛏 2 🚿 2 🚗 1

If modern spaces, generous proportions and low maintenance convenience are important for your next property purchase, this superbly designed security apartment is a must see. Peacefully positioned within the quality Atlas building and capturing sweeping parkland views, it offers a great opportunity to buy a freshly appointed home in the heart of Wentworth Point, and right next to the Millennium Parklands and Newington Nature Reserve.

- Oversized : Internal + Balcony: 105 sqm, Total: 122 sqm
- Elevated position that enjoys an expansive leafy panorama
- Full of light and energy with a generous open interior layout
- Large-sized lounge to balcony perfect for relaxing or entertaining
- Two bright bedrooms plus a study nook
- Quality & modern kitchen with breakfast bar and gas cooking
- Security car space plus lock-up storage and lift access
- Short walk to Marina Square shopping centre, transport and public school

## View

As advertised or by appointment

## Agents

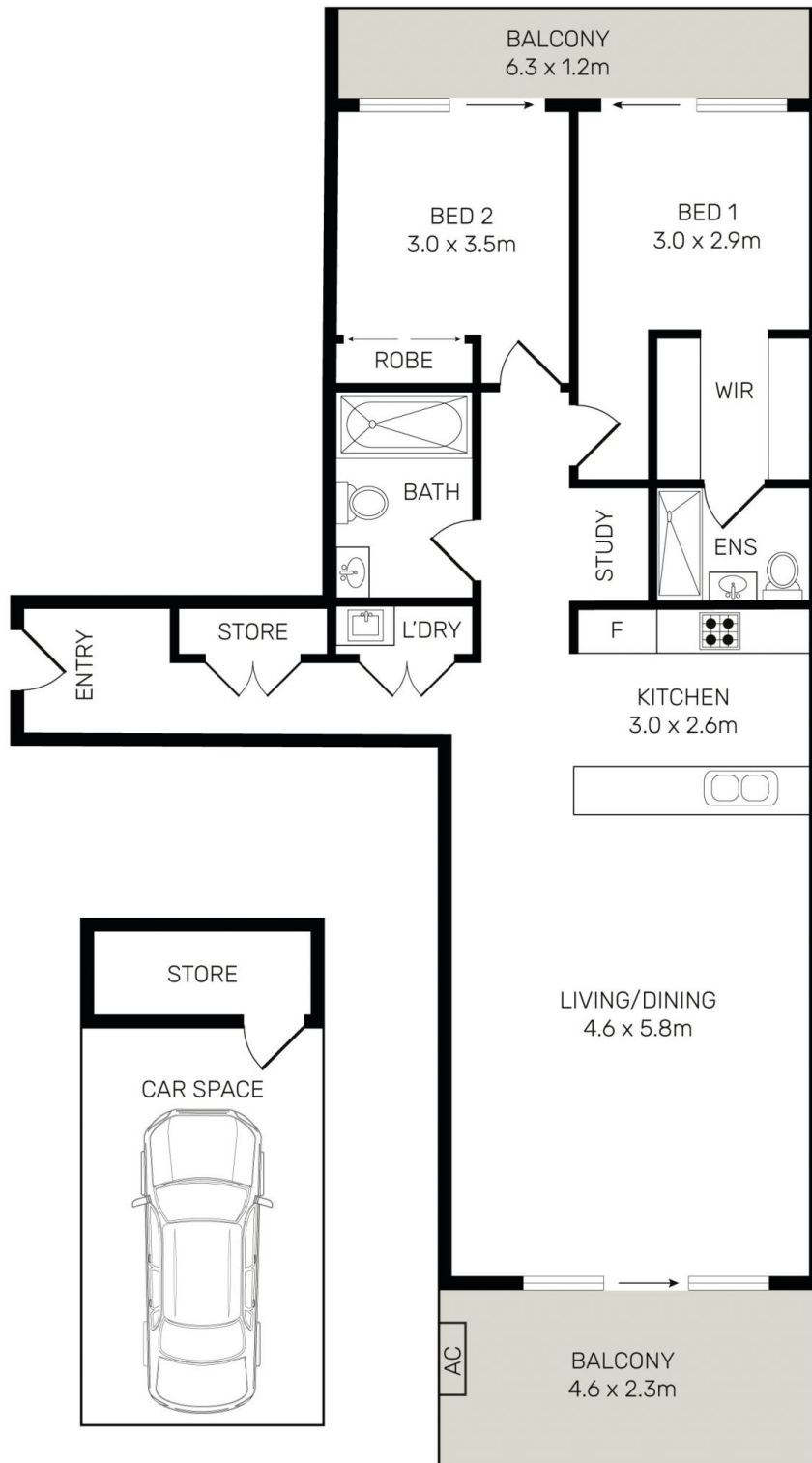
### Dylan Choe

📞 0416 932 977  
✉ dylanchoe@morton.com.au

### Calvin Chan

📞 0406 888 028  
✉ calvin@morton.com.au

**morton.com.au**



0 1 2 3 4 5

All information contained herein is gathered from all sources we believe to be reliable. However we cannot guarantee its accuracy and interested parties should rely on their own enquiries.



603/45 Hill Road, Wentworth Point