




# morton.

**Zetland** 28 Ebsworth Street

 1  1

The definition of luxurious contemporary living. A premier opportunity that has all the amenities of Green Square station, Woolworths, state of the art aquatic centre and East Village just a short stroll from your door.

- Exclusive offering finished to the highest standard
- Large double bedroom with built in robe
- Impeccably appointed for low maintenance living
- Sophisticated stone kitchen with stainless gas appliances
- Inviting open plan lounge and dining space
- Direct access from bedroom out to the balcony
- Internal laundry with dryer
- Ducted air conditioning
- Storage cage
- Utilities included at an additional cost

#### **View**

As advertised or by appointment

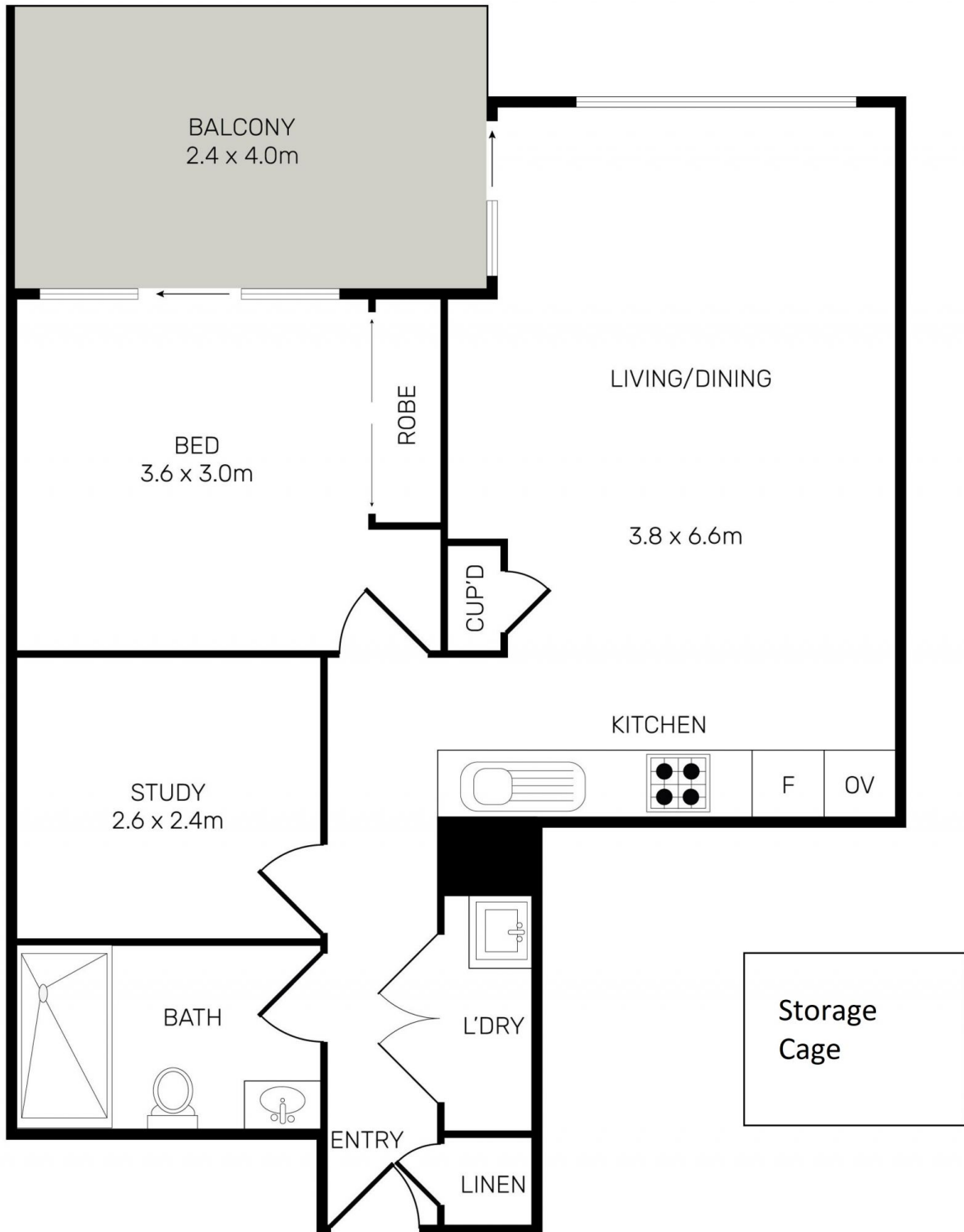
#### **Agent**

**Kristian Karaspyros**

 0436 477 102

 kristian.karaspyros@morton.com.au

[morton.com.au](https://morton.com.au)



All information contained herein is gathered from all sources we believe to be reliable. However we cannot guarantee its accuracy and interested parties should rely on their own enquiries.



CampaignPROS

**morton.**

**Zetland 705/28 Ebsworth Street**