



morton.

Sydney 88/1 Macquarie Street

 2  2  1

Set up high in Sydney's most iconic residential building, this deluxe eighth-floor residence delivers an impeccable lifestyle apartment with panoramas that will take your breath away. It commands a stunning view that showcases the Harbour Bridge in all its glory and has been designed to provide a premium inner-city living experience with the best that Sydney has to offer right at the doorstep.

- Views over the Harbour Bridge, Circular Quay and city skyline
- Large open plan living space and floor-to-ceiling walls of glass
- A sheltered entertainment terrace overlooking the harbour
- Two double bedrooms that both have access to the balcony
- Well-equipped kitchen with granite benches and gas cooktop
- Full bath ensuite plus a guest bathroom and internal laundry
- Easy level lift access direct to a security basement car space
- Walk to theatres, prestigious restaurants, shops, cafes & cinema
- Premium security, concierge, world-class resort facilities
- Luxury on-site health club with 25m heated pool, sauna and



morton.com.au

View



As advertised or by appointment

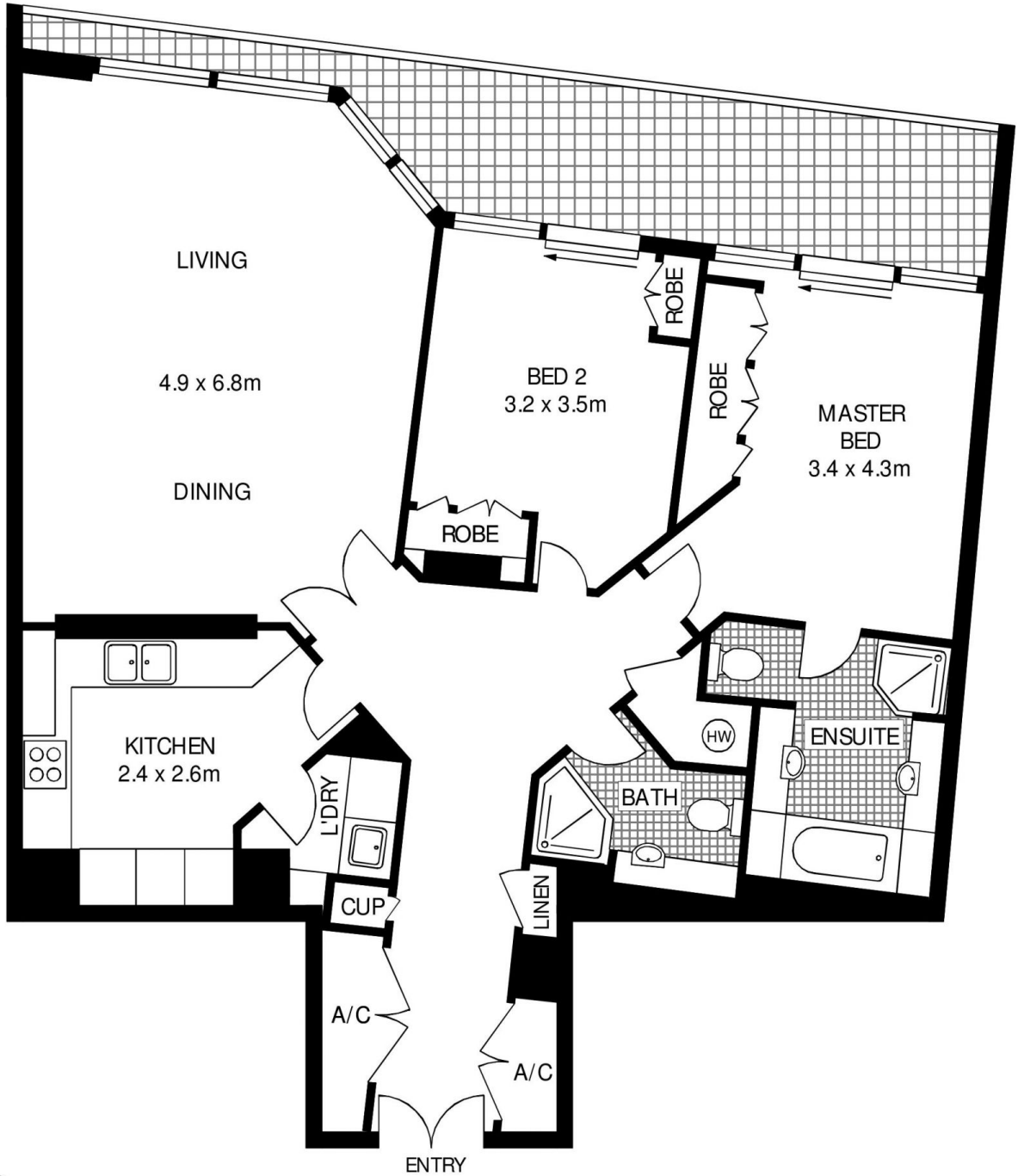
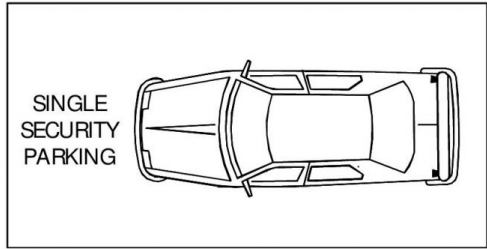
Agents

Ettiene West

 0410 593 749
 ettiene@morton.com.au

Emma Ryan

 0409 325 440
 emmar@morton.com.au



LEVEL 8



88/1 MACQUARIE STREET

SYDNEY

SCAPE Floor Planning Disclaimer: This floor plan is conceptual only. It is provided for illustrative purposes only and should not be relied upon. We make no guarantee as to the correctness of this plan. All interested parties should make and rely on their own enquiries in determining the accuracy of the information contained in this floor plan.