



morton.

Pyrmont 110/50 Murray Street

 2  2  1

There are not many residences that can create such an immediate impression of inner-city style, size and quality design. Gazing north east with jaw dropping views over Sydney's dazzling skyline, this spacious apartment provides a luxury home with generous interiors, a complete high-end renovation and over 100 sqm of in/outdoor living space. It represents a rare opportunity to secure a stunning executive retreat and become a part of the privileged 'One Darling Harbour' community.

- A flowing open plan design flooded with natural light
- An extra-large entertainment terrace overlooking the city
- Chic kitchen with designer fittings and ample storage
- Two double-sized bedrooms both have access to the terrace
- Master suite with built-ins and ensuite
- Dual window coverings, air conditioning and storage
- Security car space, lift access and intercom entrance
- Rooftop pool, spa, gym, sundeck with sweeping harbour views
- Built by Multiplex, Australia's top tier developer

View

As advertised or by appointment

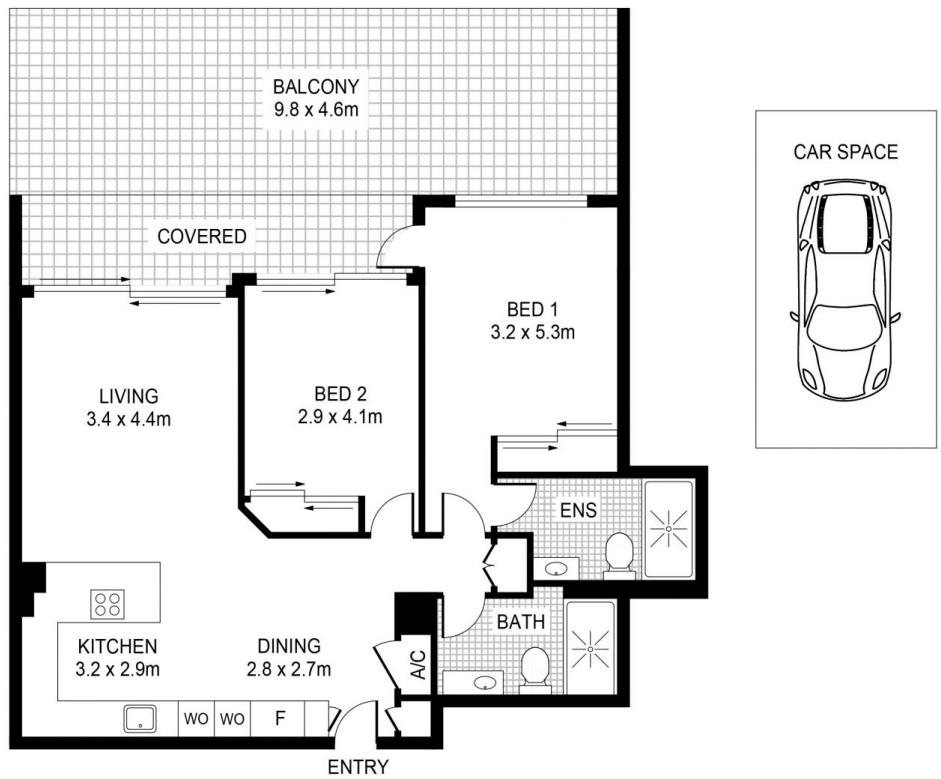
Agent

James Crow

 0410 593 057

 james@morton.com.au

morton.com.au



This floor plan including furniture, fixture measurements and dimensions are approximate and for illustrative purposes only.



SYDNEY 110/50 Murray Street

morton.