



# morton.

**Wentworth Point** 583/33 Hill Road

 2  2  1

Size, quality and convenience are the brilliant hallmarks of this inviting single-level home that enjoys relaxing views over the neighbouring parkland and the Palermo development's landscaped grounds and swimming pool. Executive perfection, this well-proportioned two-bedroom plus study residence delivers a low-maintenance lifestyle of flair and flexibility with its impressive design, premium inclusions and a great location within The Waterfront Estate.



- Flowing design featuring a generous in/outdoor living space
- A large covered terrace and an elevated north-west aspect
- Sleek contemporary kitchen with gas fittings and breakfast bar
- Two generous bedrooms plus a separate study/media area
- Internal laundry, full bathroom plus an ensuite off the main
- Basement car space and storage cage accessed by a security lift
- Full use of the Palermo outdoor swimming pool and gym

### View

As advertised or by appointment

### Agents

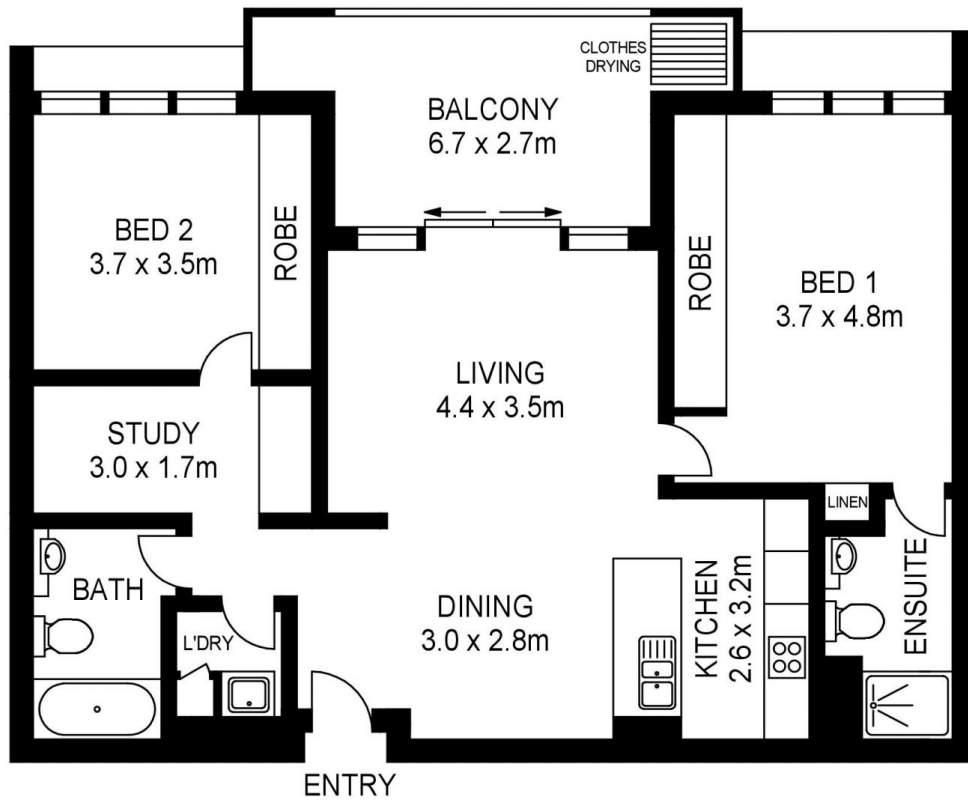
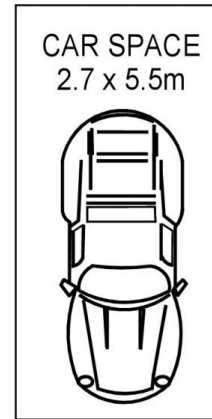
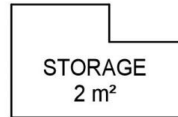
#### Dylan Choe

 0416 932 977  
 dylanchoe@morton.com.au

#### Akanksha Chaudhari

 0447 201 786  
 akanksha@morton.com.au

[morton.com.au](https://morton.com.au)



## 583/33 HILL ROAD, WENTWORTH POINT



[www.assetphotographers.com.au](http://www.assetphotographers.com.au)

Please note these measurements are approximate only. The plans is intended as a rough guide for illustrative purpose. It is not warranted or guaranteed to be correct nor it is part of the sale or rental contract