



morton.

Little Bay 1/10 Darwin Avenue

1 1 1

Located just 20 minutes from the Sydney CBD and a five minute stroll to the sand of Little Bay Beach, the Prince Henry Hospital development comprises a unique collection of superbly restored landmark heritage buildings. This private, spacious one bedroom single storey heritage apartment features high ceilings, grand windows and stunning colonnaded outdoor entertaining spaces.

- Soaring four metre high ceilings and original features throughout
- Grand windows maximising light and airflow
- Huge colonnaded private outdoor entertaining areas
- Beautiful, relaxing lounge area opening onto outdoor patio
- Separate kitchen with high end appliances
- One bright bedroom with built in robe and wool carpet
- Large stylish bathroom
- Internal laundry
- Open air car space
- Huge 27 sqm secure basement storage area ideal for either storage, home gym or even a home office

View

As advertised or by appointment

Agents

Kristian Karaspyros

0436 477 102

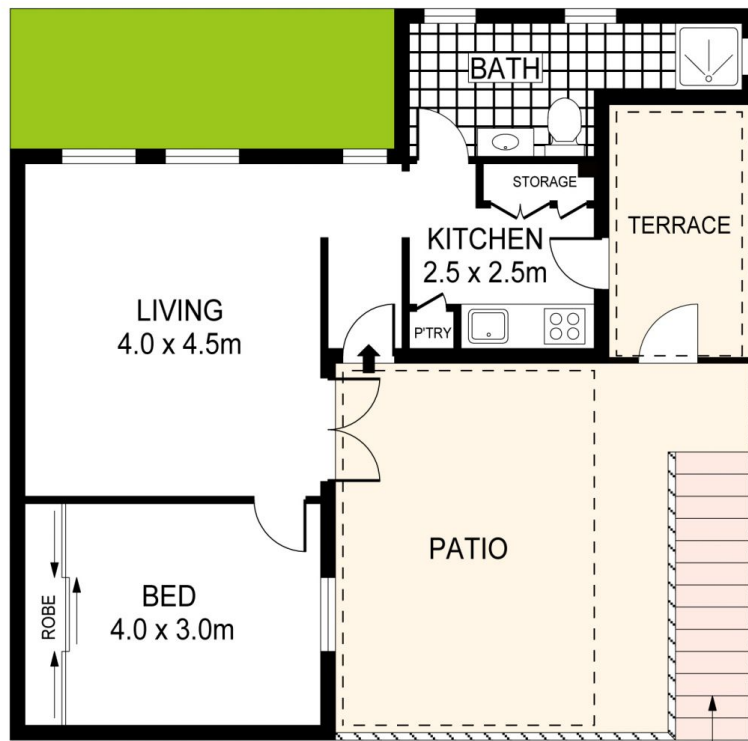
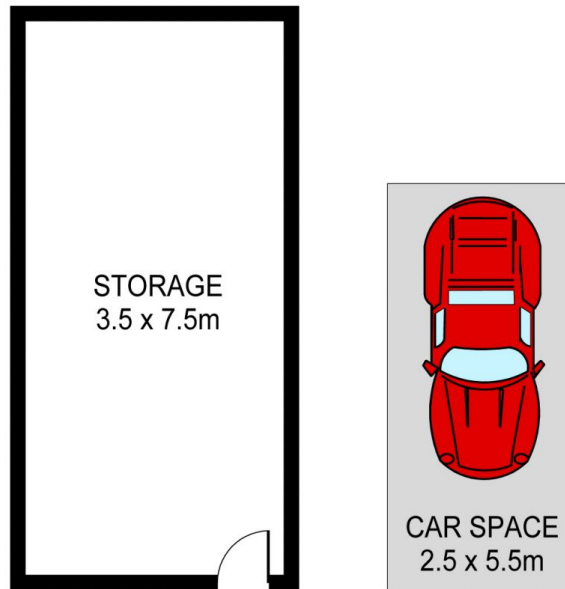
kristian.karaspyros@morton.com.au

Ayush Jain

0410 539 793

ayush@morton.com.au

morton.com.au



GROUND LEVEL



PLANS SHOWN ONLY INDICATIVE OF LAYOUT. DIMENSIONS ARE APPROXIMATE.
Ref. No: 36814

