



**morton.**

**Pyrmont** 1207/50 Murray Street

 2  2  1

Style, space and inspiring sunset views define this designer apartment where light filled interiors feature quality finishes and a great sense of privacy. Set up high in the 'One Darling Harbour' tower, it delivers a great contemporary base with its smart single level design, bright breezy interiors and outstanding city-edge position within minutes to the CBD.

- Well finished with understated modern appointments
- Designed for effortless indoor/outdoor entertaining
- Spacious master complete with ensuite and built in robe
- Chic kitchen, electric appliances, granite benchtop
- Rooftop observation deck, indoor heated pool and gym
- Security car space, lift access and intercom entrance
- 24 hour concierge, light filled balcony, European laundry
- Brand new paint and carpet
- Exclusive use of two secure storage areas

**View**

As advertised or by appointment

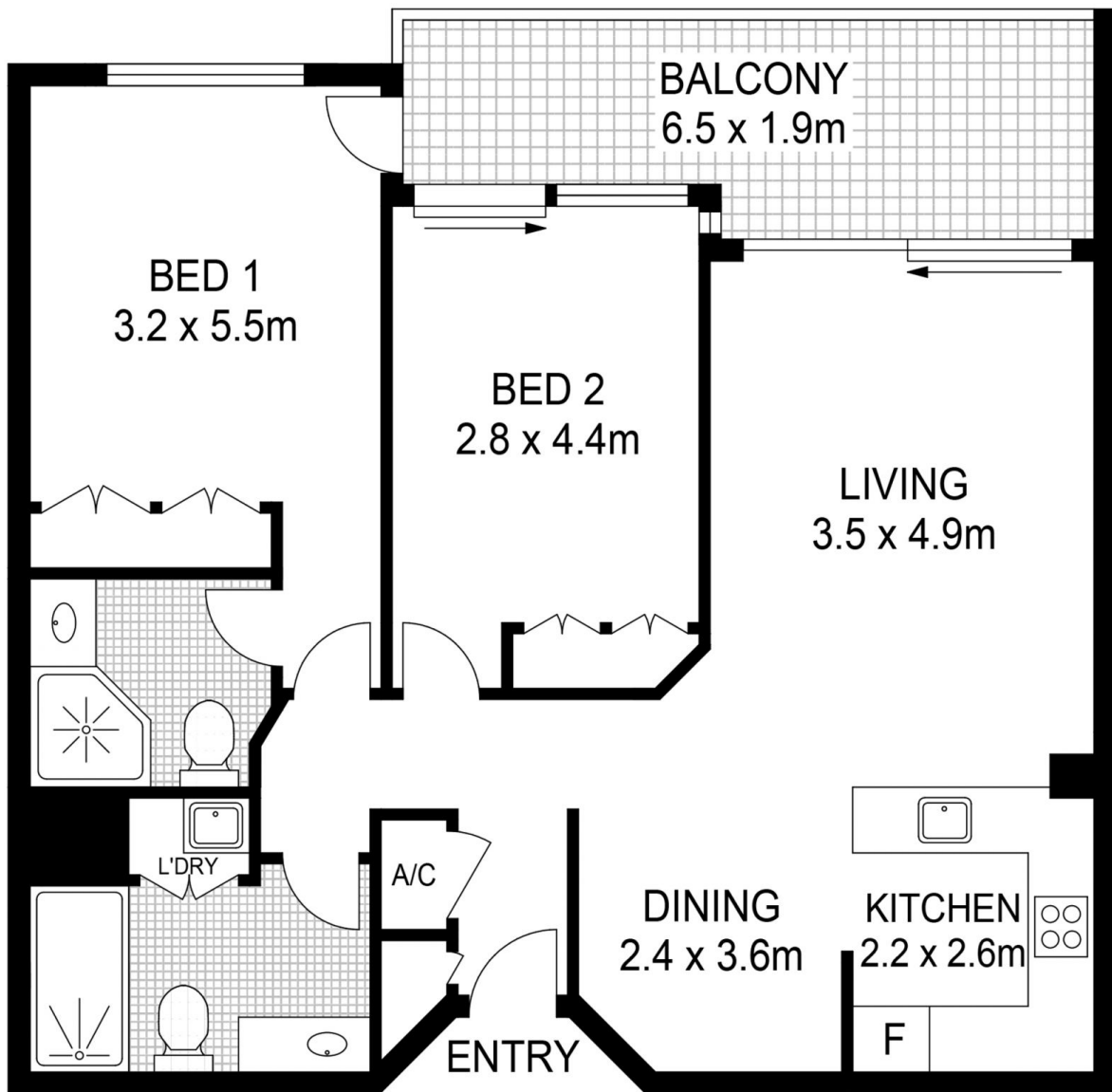
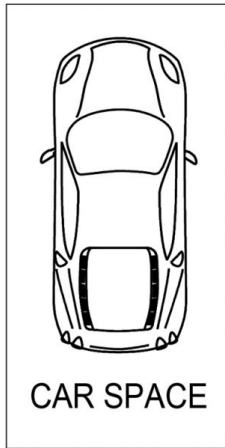
**Agent**

**James Crow**

 0410 593 057

 james@morton.com.au

**morton.com.au**



PLANS SHOWN ONLY INDICATIVE OF LAYOUT. DIMENSIONS ARE APPROXIMATE.

