



morton.

Zetland 603/1 Lamond Lane

 2  2  1

Located in the desirable Emerald Park development, this oversized split level two bedroom apartment offers a modern life style and comes equipped with expansive glass windows allowing a abundance of natural light leading onto a large north facing balcony. Main bedroom comes equipped with ensuite and both bedrooms include a private park facing balcony.

The property is situated in a quiet street, directly across the road from Mary O'Brien Reserve and within short walking distance to East Village and public transport.

- Two large bedrooms, main fitted with ensuite
- Private park facing balconies from each bedroom
- Main bathroom equipped with bath
- Oversized open plan living and dining area
- Stainless steel appliances and gas cook top with wok burners
- Caesar stone bench top
- North facing balcony equipped for entertaining



morton.com.au

View



As advertised or by appointment

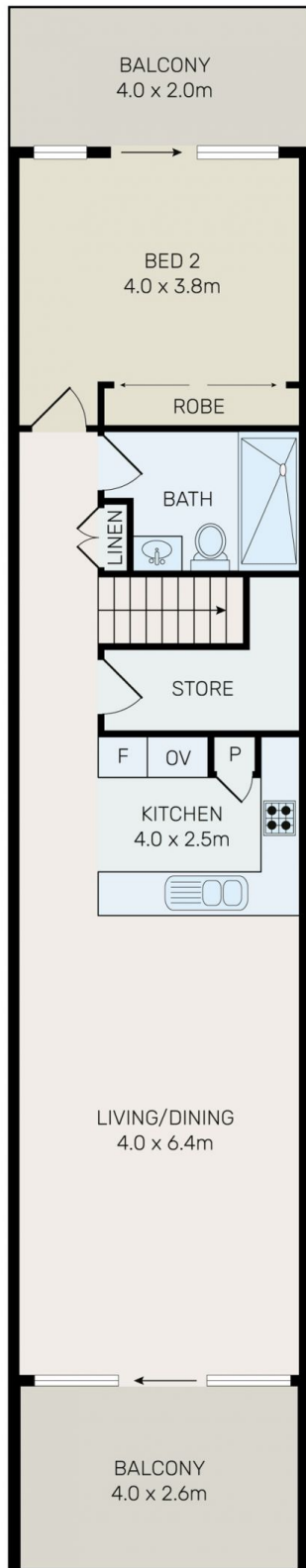
Agents

Calvin Chan

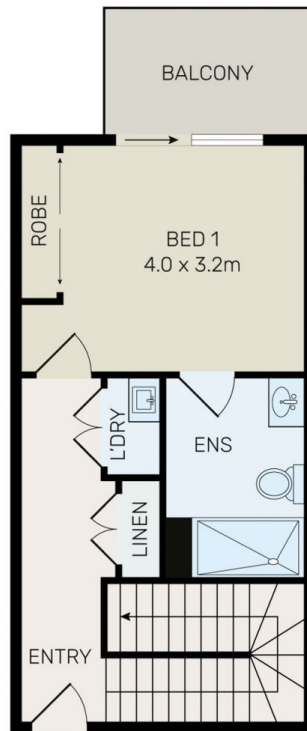
 0406 888 028
 calvin@morton.com.au

Jackson Figueiras

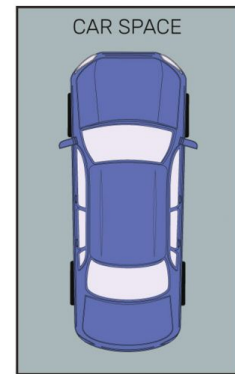
 0448 764 345
 jackson@morton.com.au



LOWER LEVEL



UPPER LEVEL



All information contained herein is gathered from all sources we believe to be reliable. However we cannot guarantee its accuracy and interested parties should rely on their own enquiries.

CampaignPROS