



morton.

Woolloomooloo 517/6 Cowper Wharf Roadway

🛏 3 🚗 2 🚗 1

This magnificent apartment with expansive views has a very generous floor plan that maximises the 158sqm of open space. Two generous bedrooms plus a master suite with walk-in robe and ensuite, all combine to make this apartment the ultimate retreat. Spectacular views over the marina, across to the Botanic Gardens and an exciting city skyline backdrop.

- Cathedral ceilings and skylights
- Gourmet kitchen with granite finishes
- Spacious open plan living and dining
- Master suite includes walk in robe and spa bath
- Spacious rooms with plenty of storage
- Air-conditioning and internal laundry
- Security parking and 24 hour onsite security
- Minutes walk to Botanic Gardens and CBD
- Additional parking available

View

As advertised or by appointment

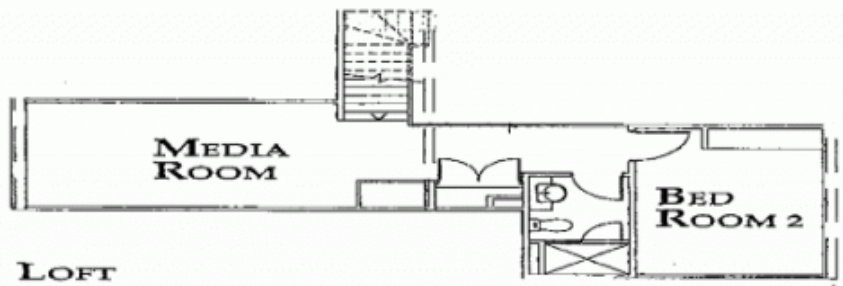
Agent

Noel Jenkins

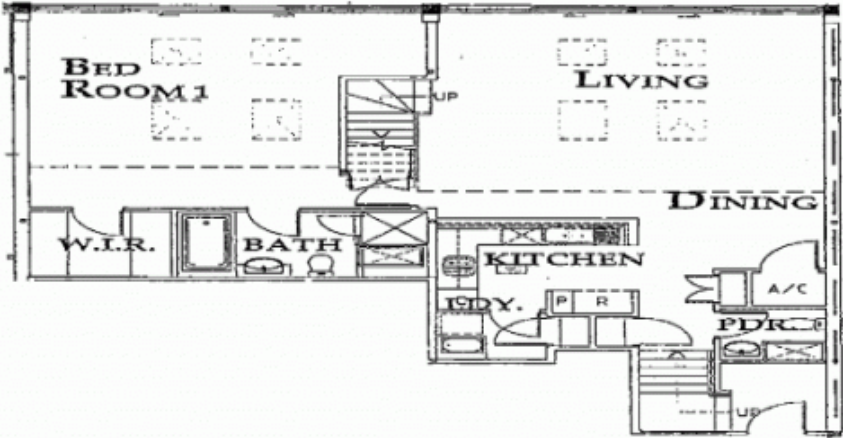
📞 0410 593 694

✉ noel@morton.com.au

morton.com.au



LOFT



LEVEL 5

THE WHARF

UNIT No. 5-17

