



morton.

Woolloomooloo 236/6 Cowper Wharf Roadway

🛏 1 🚿 1

Situated on the eastern side of The Finger Wharf is this large one bedroom apartment with a balcony and plenty of space to enjoy. With views towards Potts Point and Garden Island, this bright property offers an easy and enjoyable lifestyle.

- Large open plan lounge/dining area
- Kitchen with gas cooktop and dishwasher
- Master bedroom with built-in robe
- Natural light throughout with floor to ceiling glass sliding doors
- Waterfront balcony
- Internal laundry
- Reverse cycle air conditioning
- 24 hour on-site security

View

As advertised or by appointment

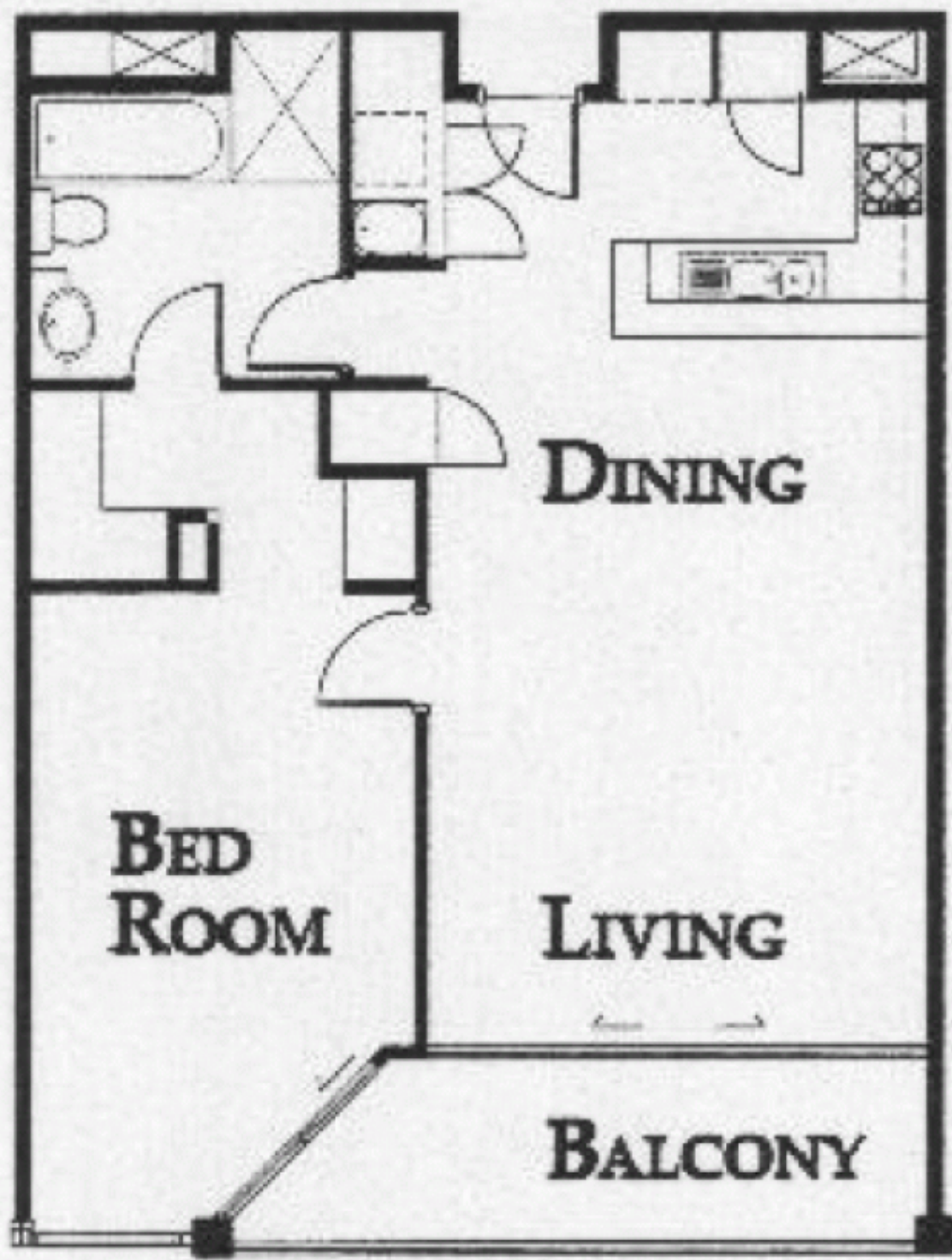
Agent

Christian Postiglione

📞 0400 074 525

✉ christian.postiglione@morton.com.au

morton.com.au



**BED
ROOM**

DINING

LIVING

BALCONY