



morton.

Woolloomooloo 131/6 Cowper Wharf Roadway

1 1 1

Located in a quiet position on the eastern side of the historic Finger Wharf, this spacious apartment offers prestigious living. Both living space and bedroom flow to a beautiful entertainer's deck with idyllic views to the Harbour, making this unit the ultimate lifestyle location. This perfect waterfront living is just a short walk to restaurants, cafes, transport, galleries as well as walking distance to the CBD, Potts Point and the Botanical Gardens.

- Envious harbourside entertaining deck
- Stylishly presented with contemporary living in mind
- Light-filled master bedroom with built-ins
- Generously sized combined lounge and dining area
- Modern kitchen, tiled bathroom and separate laundry
- Air conditioning, onsite building security
- Convenient lifestyle location, walk to the CBD
- Opportunity to purchase marina berth and Wharf parking separately

View

As advertised or by appointment

Agents

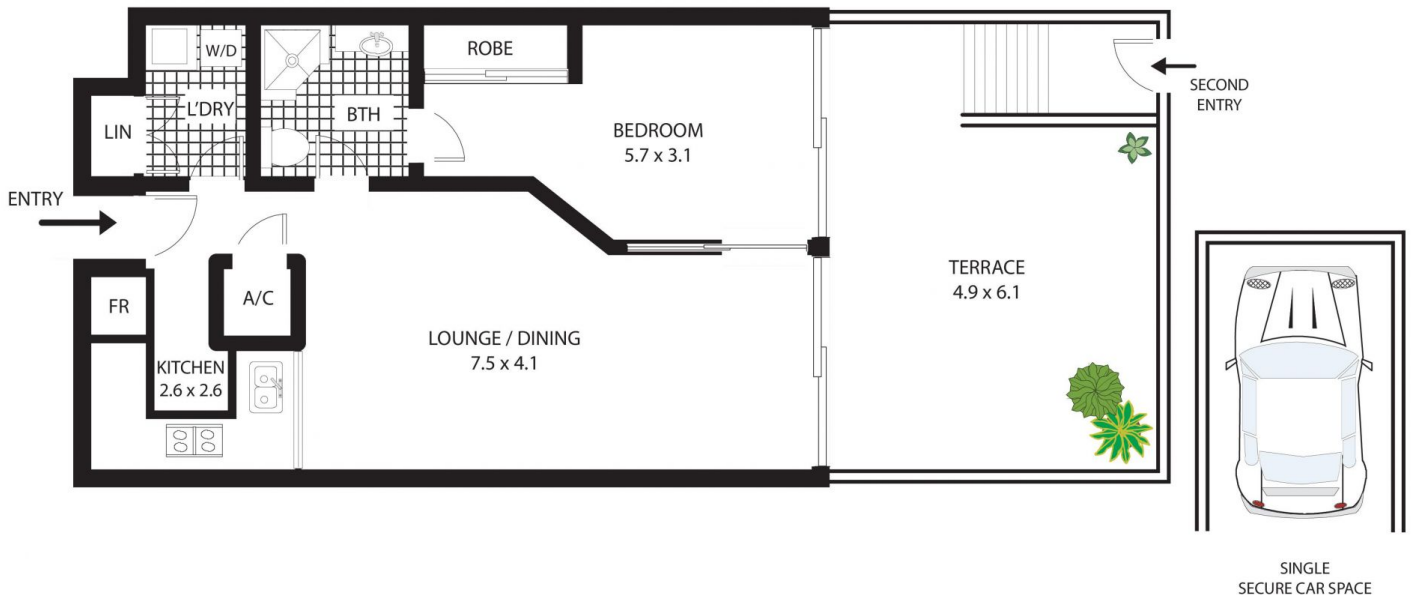
Amanda Clement

0448 016 404
amanda.clement@morton.com.au

Noel Jenkins

0410 593 694
noel@morton.com.au

morton.com.au



131/6 Cowper Wharf Road, Woolloomooloo

All measurements are approximate only. Plan is provided as an indication of layout

