



# morton.

Wentworth Point 805/1 The Piazza

2 2 1

A smart and easy living lifestyle opportunity comes with this freshly presented apartment that's well located within easy reach of Wentworth Point's village amenities and the water's edge. Its premium top floor position in the stylish Capri complex gives it a captivating outlook over the surrounding area, plus it's light-filled throughout and ready to move in and enjoy.

- Generous open design featuring a bright and airy living space
- North-easterly aspect that enhances natural light and breezes
- A sundrenched entertainment balcony and sweeping views
- Full gas-fitted kitchen with stone benches and a dishwasher
- Two bedrooms with built-ins, main opens onto the balcony
- Easy lift access to a security car space in the basement
- Air-conditioning, full bath ensuite and an internal laundry

### View

As advertised or by appointment

### Agents

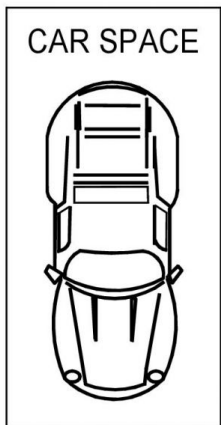
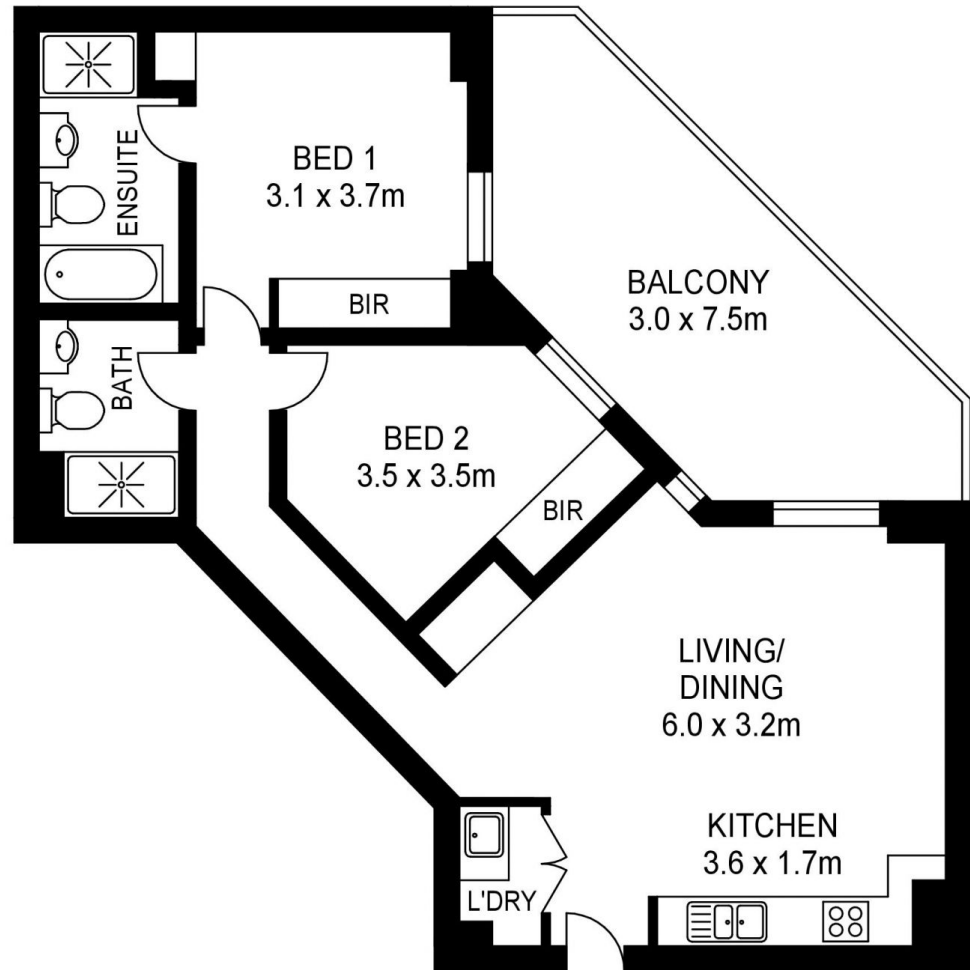
#### Dylan Choe

0416 932 977  
dylanchoe@morton.com.au

#### Vivian Zhang

0447 964 200  
vivian@morton.com.au

[morton.com.au](http://morton.com.au)



## 805/1 THE PIAZZA, WENTWORTH POINT



[www.assetphotographers.com.au](http://www.assetphotographers.com.au)

Please note these measurements are approximate only. The plans is intended as a rough guide for illustrative purpose. It is not warranted or guaranteed to be correct nor it is part of the sale or rental contract