



**morton.**

**Pyrmont** 331/3 Darling Island Road

 3  3  3

Extraordinary space, quality and luxury define this one-of-a-kind harbourfront residence that occupies an entire floor at the northernmost tip of the exclusive Darling Island enclave. Created to provide an unrivalled on-the-water experience and set against an inspiring city and harbour backdrop, it offers an impeccable lifestyle apartment of size and sophistication with an impressive 298sqm in/outdoor living area with an exceptional sense of space, light and privacy.

- Beautifully renovated with many high-quality bespoke finishes
- Spectacular cityscape views captured from all major rooms
- Mesmerising harbour backdrop inc. the Bridge and Barangaroo
- Large walls of glass that maximise natural light and outlooks
- Spacious and light-filled open plan with heated limestone flooring
- An entertainment terrace plus balconies with sublime city views
- Showpiece kitchen with the finest Wolf and Subzero

**View**

As advertised or by appointment

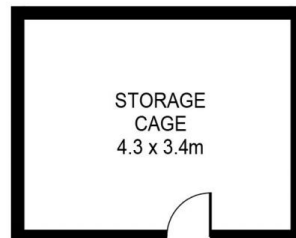
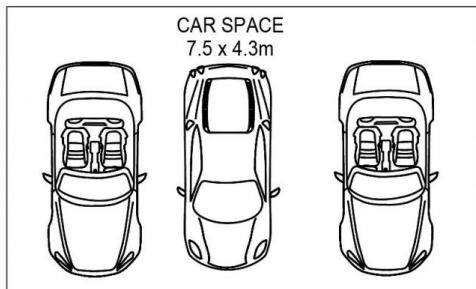
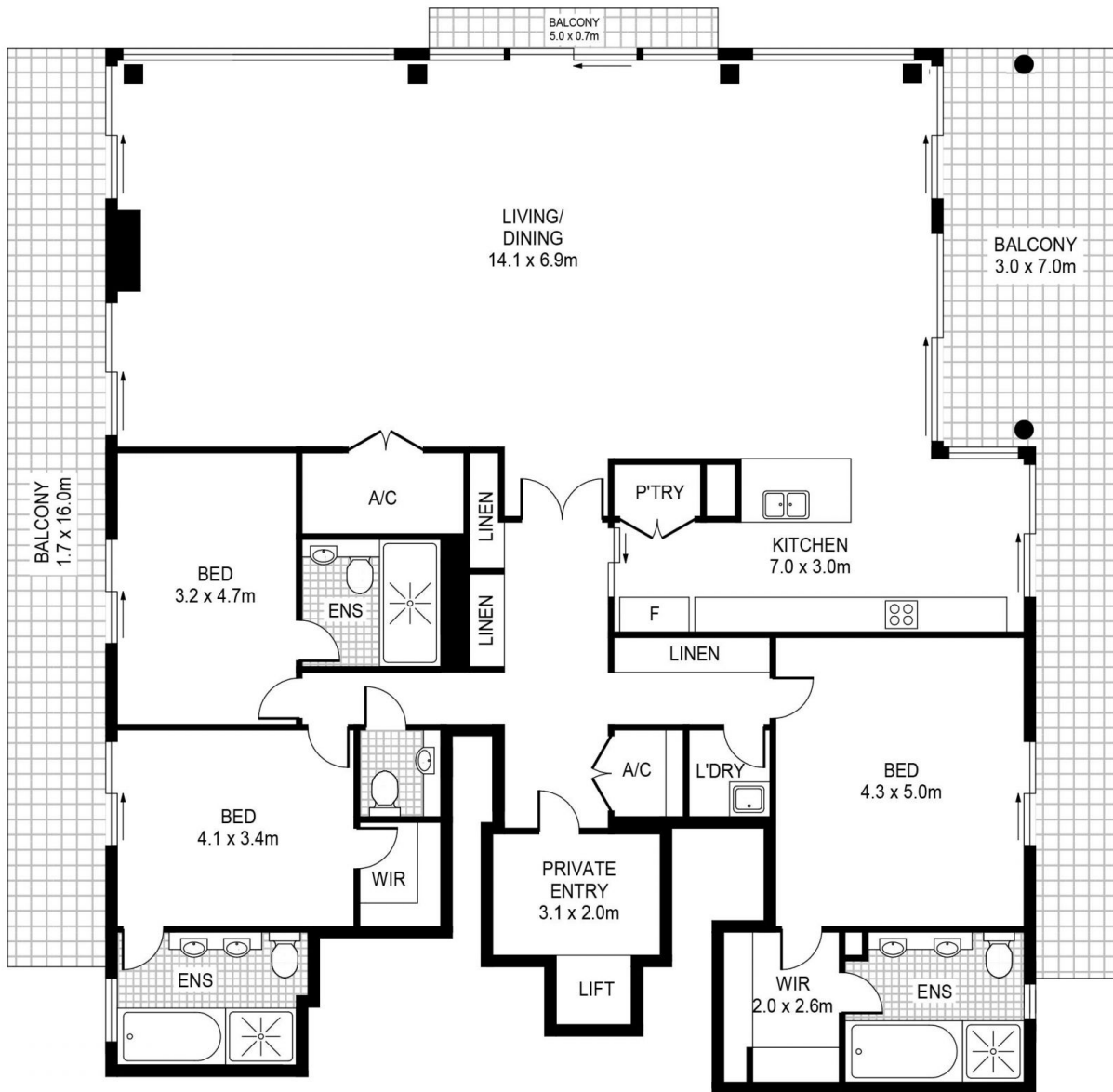
**Agent**

**James Crow**

 0410 593 057

 james@morton.com.au

**morton.com.au**



PLANS SHOWN ONLY INDICATIVE OF LAYOUT. DIMENSIONS ARE APPROXIMATE.

