



morton.

Wentworth Point 621/10 Half Street

🛏 1 🚿 1 🚗 1

Primely positioned in the heart of one of Sydney's most enthralling waterfront developments, metres from the Parramatta River, this sleek apartment enjoys a sun-drenched North aspect on the 6th floor of the 'Savannah' building at Wentworth Point Marinas.

It offers sophisticated low hassle living with premium quality finishes throughout and is only moments to Rhodes via Bennelong Bridge, city ferries from Olympic Park Wharf.

- Highly desirable prospect for market newcomers/investors
- Open plan lounge/dining with North aspect
- Stylish stone kitchen has deluxe appliances and gas cooking
- Good sized bedroom plus a beautiful, fully tiled modern bathroom
- Internal laundry, built-in robes/storage and air conditioning
- Intercom, security parking space and lock-up private storage
- Near foreshore walk and cycleway, parks and playing fields

View

As advertised or by appointment

Agents

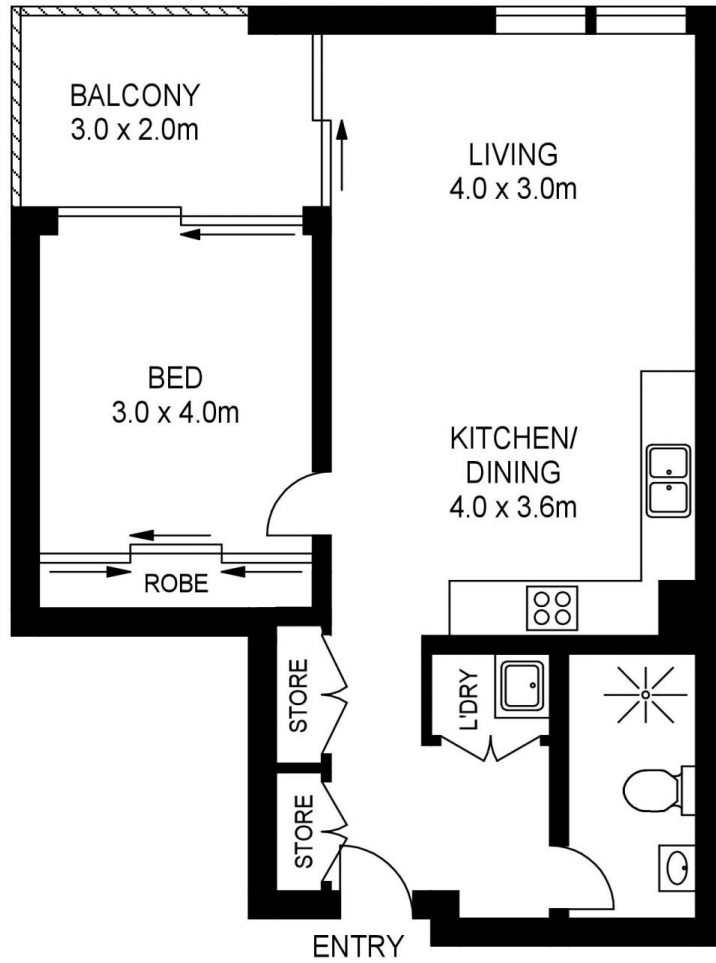
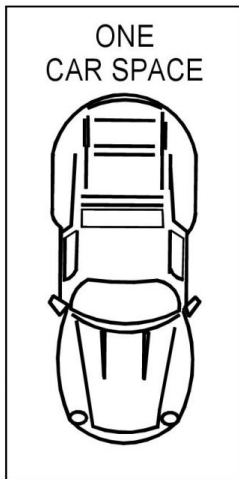
Dylan Choe

📞 0416 932 977
✉ dylanchoe@morton.com.au

Vivian Zhang

📞 0447 964 200
✉ vivian@morton.com.au

morton.com.au



621/10 HALF STREET, WENTWORTH POINT



www.assetphotographers.com.au

Please note these measurements are approximate only. The plans is intended as a rough guide for illustrative purpose. It is not warranted or guaranteed to be correct nor it is part of the sale or rental contract