



morton.

Sydney 46/278 Sussex Street

 2  1  2

This generous open plan living-dining apartment is within double brick 'New Haven' building offering south-westerly urban cityscape. Ideally located in the heart of Sydney and just minutes from Darling Harbour and Town hall this provides an easy access to everything the vibrant CBD can offer. A perfect entry choice for first home buyers or investors for Sydney's most prized mid-town location.



- Quality refurbished complex built in mid 1980's
- Full length entertainer's balcony
- Open plan kitchen and internal laundry
- Valuable tandem car space on title
- Security building, automatic entrance doors, newly updated lifts
- Communal pool & roof top terrace with BBQ facilities

View



As advertised or by appointment

Agents

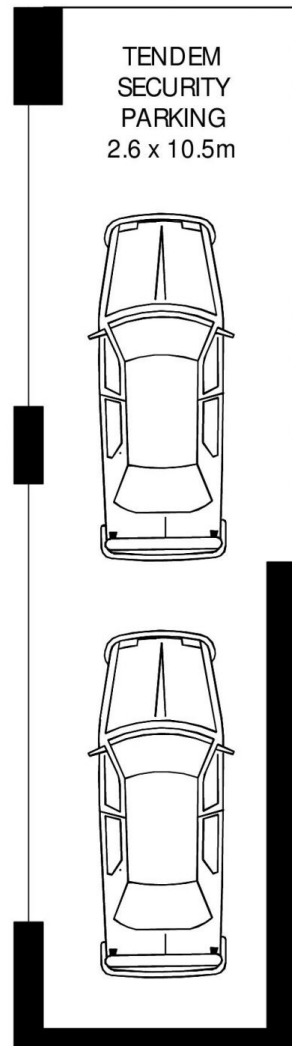
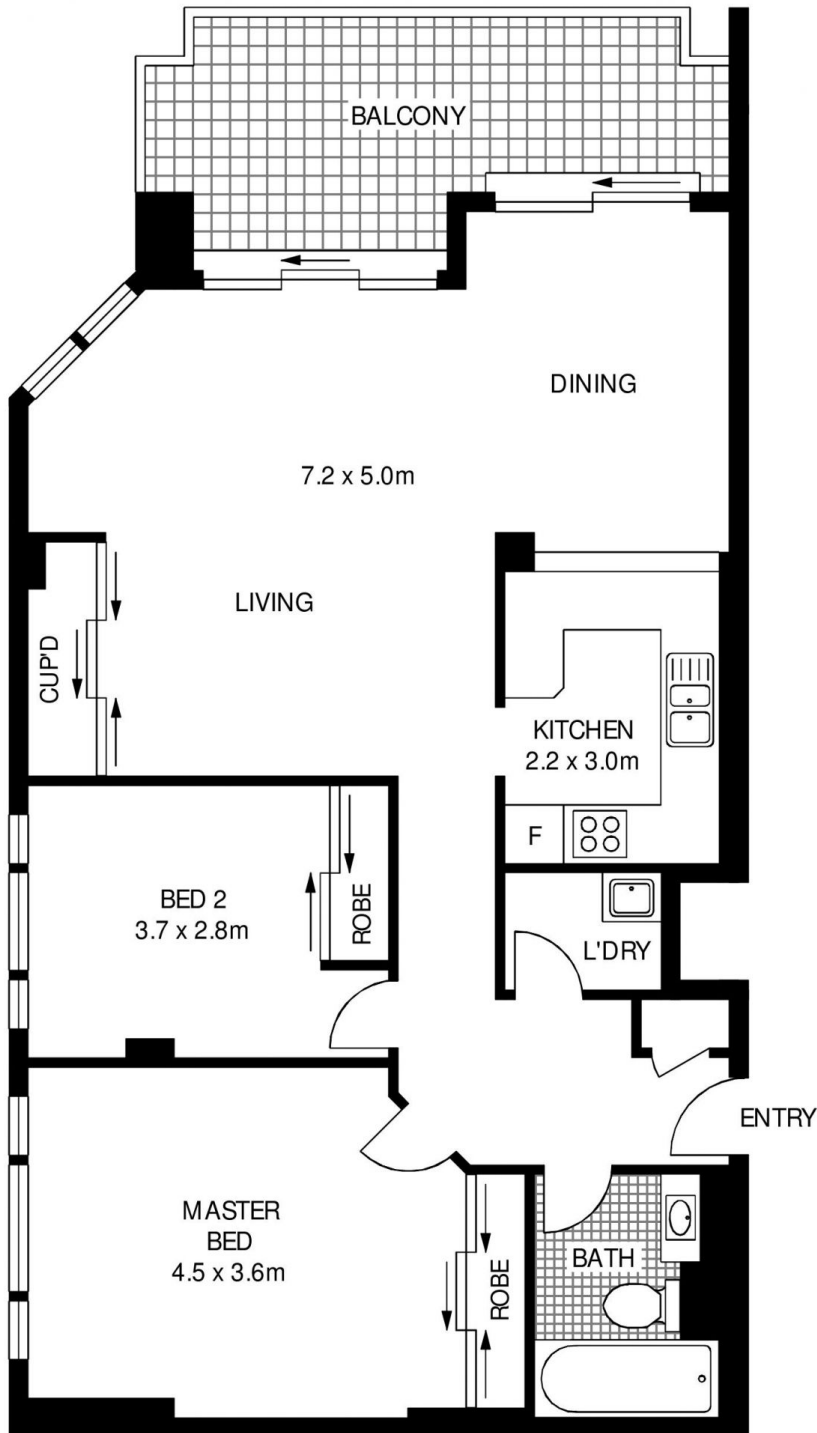
Ettiene West

 0410 593 749
 ettiene@morton.com.au

Emma Ryan

 0409 325 440
 emmar@morton.com.au

morton.com.au



LEVEL 8



46/278 SUSSEX STREET

SYDNEY

SCAPE Floor Planning Disclaimer: This floor plan is conceptual only. It is provided for illustrative purposes only and should not be relied upon. We make no guarantee as to the correctness of this plan. All interested parties should make and rely on their own enquiries in determining the accuracy of the information contained in this floor plan.