



morton.

Sydney 178/569 George Street

🛏 3 🚿 3 🚗 2

Situated in one of Sydney's most vibrant locations, this North-West facing three bedroom penthouse apartment enjoys sweeping views of the city's skyline from every room. Floor to ceiling glass in all rooms enhances natural light.

- 134sqm apartment with a north westerly aspect and stunning city views
- Open-plan lounge and dining with a city lights backdrop
- Large gourmet kitchen with Caesar Stone finishes and European appliances
- Three bedrooms with built-ins and breathtaking views
- Modern bathrooms, powder room, study
- Spacious entertainers balcony
- Timber floors, high ceilings, ample storage
- A/C, video intercom, large laundry, 2 car spaces, extra large storeroom
- Pool, gym, spa, sauna, games room, concierge facilities all on site

View

As advertised or by appointment

Agents

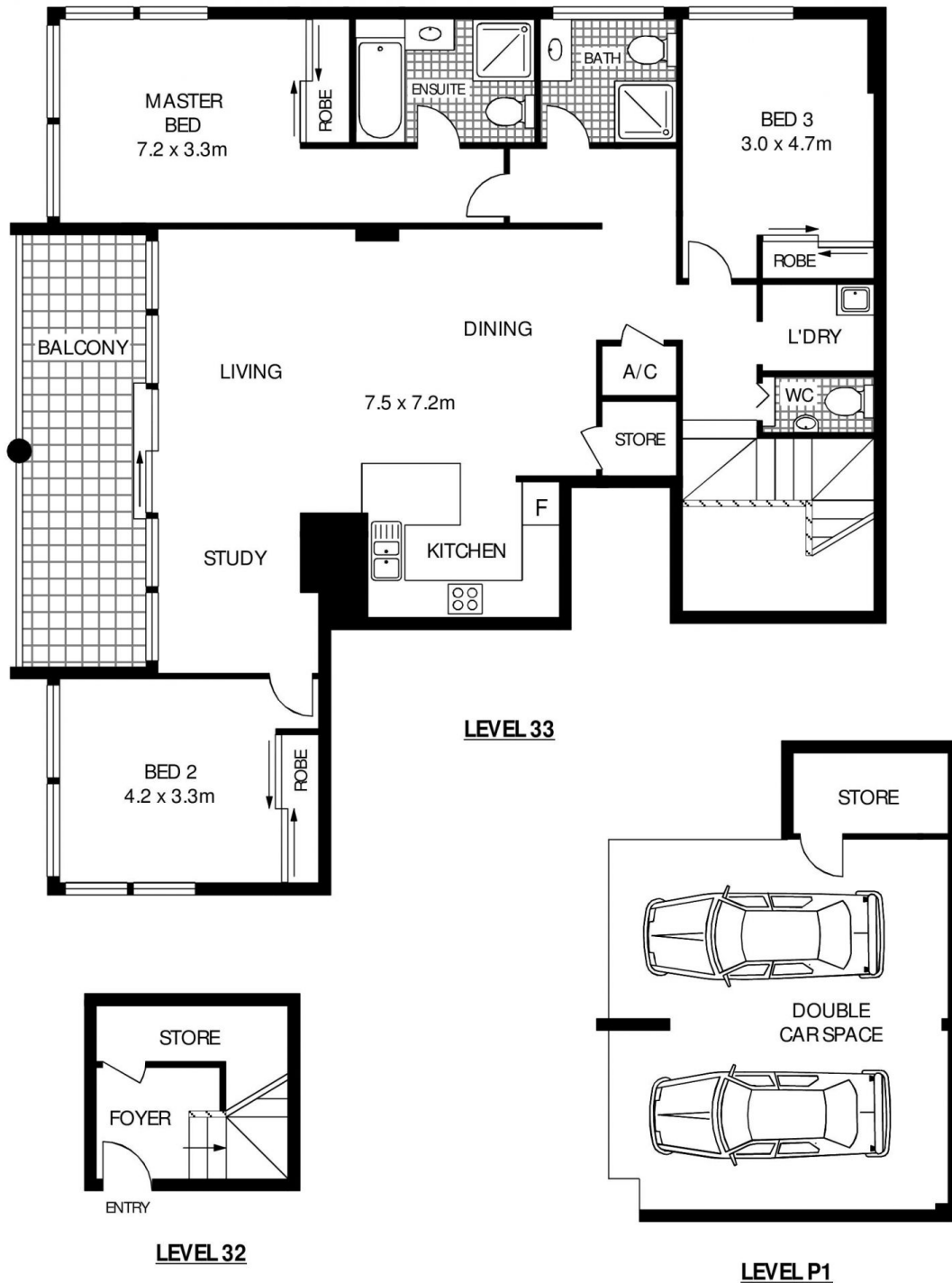
Ettiene West

📞 0410 593 749
✉ ettiene@morton.com.au

Emma Ryan

📞 0409 325 440
✉ emmar@morton.com.au

morton.com.au



178/569 GEORGE STREET

SYDNEY

SCAPE Floor Planning Disclaimer: This floor plan is conceptual only. It is provided for illustrative purposes only and should not be relied upon. We make no guarantee as to the correctness of this plan. All interested parties should make and rely on their own enquiries in determining the accuracy of the information contained in this floor plan.