



morton.

Woolloomooloo 359/6 Cowper Wharf Roadway



Positioned on the heritage level on the western side of the Finger Wharf, is this bright and large city facing studio offering an abundance of natural light. With its original exposed beams and braces, this unfurnished property makes the most of the waterfront living and offers an easy and enjoyable lifestyle

- Unfurnished
- Separate modern kitchen and stainless steel appliances
- Full bathroom and internal laundry
- Practical floorplan, ample storage
- Conveniently located at the Finger Wharf
- 24hr security waterfront location
- Walk to Potts Point and CBD

View

As advertised or by appointment

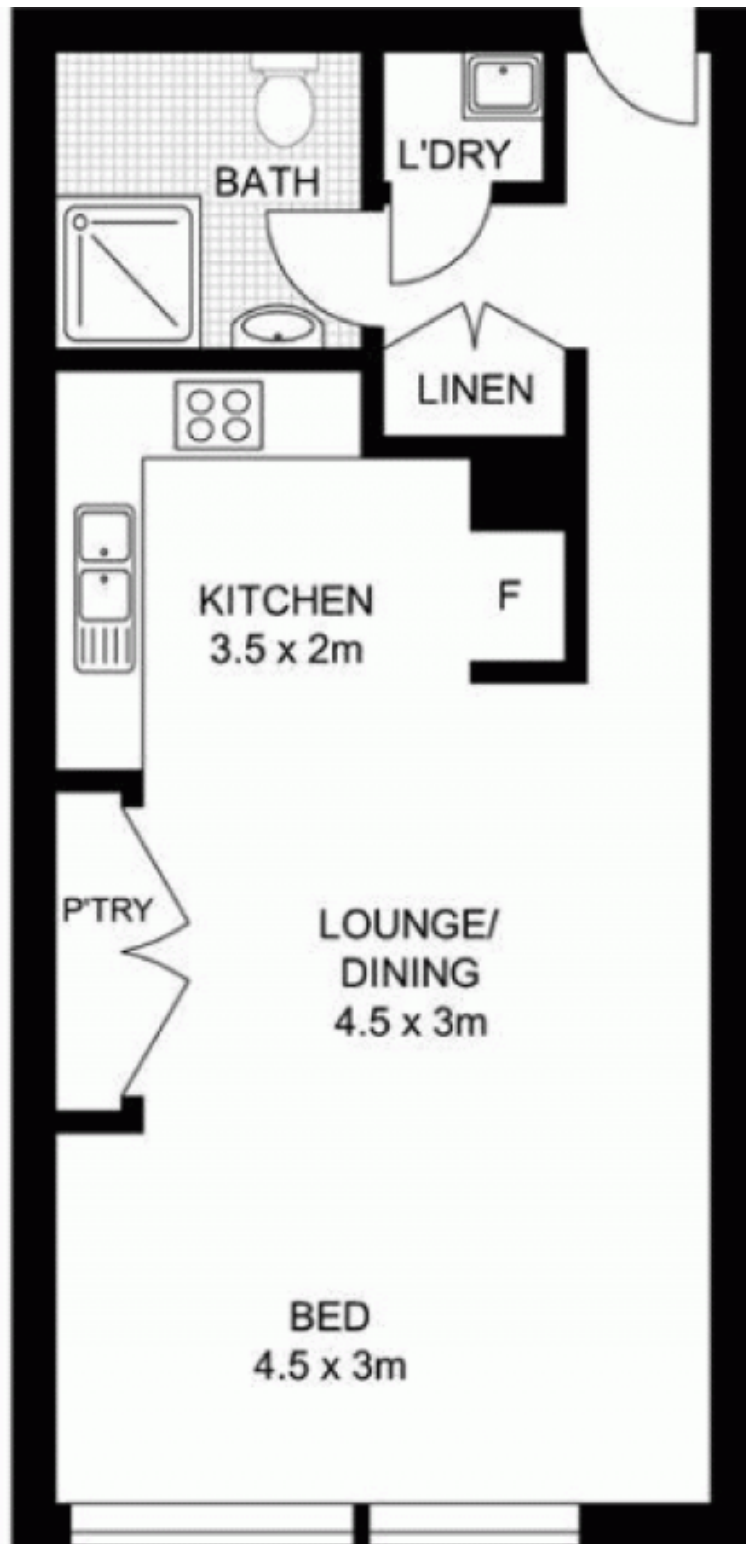
Agent

Christian Postiglione

📞 0400 074 525

✉️ christian.postiglione@morton.com.au

morton.com.au



359/6 COWPER WHARF

WOOLLOOMOOLOO



ALL INFORMATION CONTAINED HEREIN IS GATHERED FROM SOURCES WE BELIEVE TO BE RELIABLE. HOWEVER WE CANNOT GUARANTEE ITS ACCURACY AND INTERESTED PERSONS SHOULD RELY ON THEIR OWN ENQUIRIES. DIMENSIONS ARE APPROXIMATE