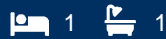




morton.

Woolloomooloo 4/68 Sir John Young Crescent



Exquisitely positioned to enjoy a stunning city-fringe address. This sleek 1-bedroom apartment represents a superior investment or first home in an outstanding location providing an opportunity is truly second-to-none.

This apartment is unique, with its very own private entry. Split over two levels it offers the privacy of urban terrace living. Ideally facing east to capture the glorious morning sunshine. Streamlined interiors, high-end finishes, and a spacious layout combine to create an upmarket city residence.

- Separate Study nook - perfect for working from home
- Interiors created by Pike Withers, private secure entry
- Whole floor living/entertaining, floor to ceiling glass
- Streamlined Miele-appointed Caesar stone gas kitchen
- Double bedroom with built-ins and a private courtyard
- Glamorous security foyer with concierge, lift access
- Designer bathroom, internal laundry,
- Ducted reverse air conditioning
- Spacious 73sqm of living space

morton.com.au

View

As advertised or by appointment

Agents

Amanda Clement

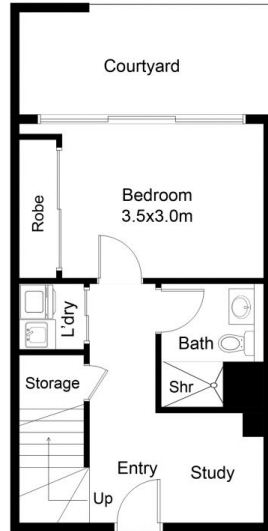
📞 0448 016 404

✉️ amanda.clement@morton.com.au

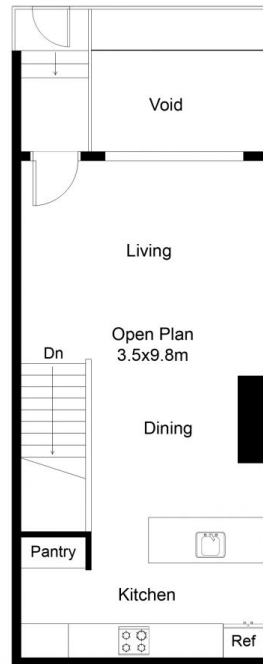
Noel Jenkins

📞 0410 593 694

✉️ noel@morton.com.au



GROUND LEVEL



UPPER LEVEL

This floor plan including furniture, fixture measurements and dimensions are approximate and for illustrative purposes only. BoxBrownie.com gives no guarantee, warranty or representation as to the accuracy and layout. All enquiries must be directed to the agent, vendor or party representing this floor plan.

4/68 Sir John Young Crescent Woolloomooloo