



morton.

Woolloomooloo 410/6 Cowper Wharf Roadway

🛏 3 🚿 2 🚗 2

Experience state of the art luxury in this perfectly positioned 186sqm residence. World class views, extravagant proportions, this apartment showcases superior architectural detail that merges seamlessly with it's natural lush surroundings. This residence has been designed to an impeccable standard by renowned Sydney architect Louise Nettleton. It offers a luxurious, low maintenance life style in one of Sydney's most exclusive harbour side postcodes.

Ideally positioned at the water's edge, this residence boasts floor-to-ceiling windows that provide panoramic views across the water to the city skyline, creating a peaceful and tranquil retreat. This magnificent apartment layout is an unparalleled fusion of space, style, and elegance.

The master suite is a private oasis that exudes luxury and tranquillity, with its spa-like en-suite bathroom, walk-in wardrobe, and awe-inspiring views of the harbour. The second bedroom is equally impressive and offers a versatile and spacious environment, perfect for guests. A clever layout

View

As advertised or by appointment

Agents

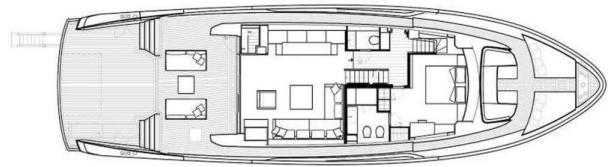
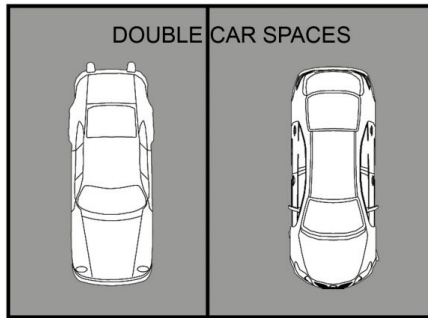
Amanda Clement

📞 0448 016 404
✉ amanda.clement@morton.com.au

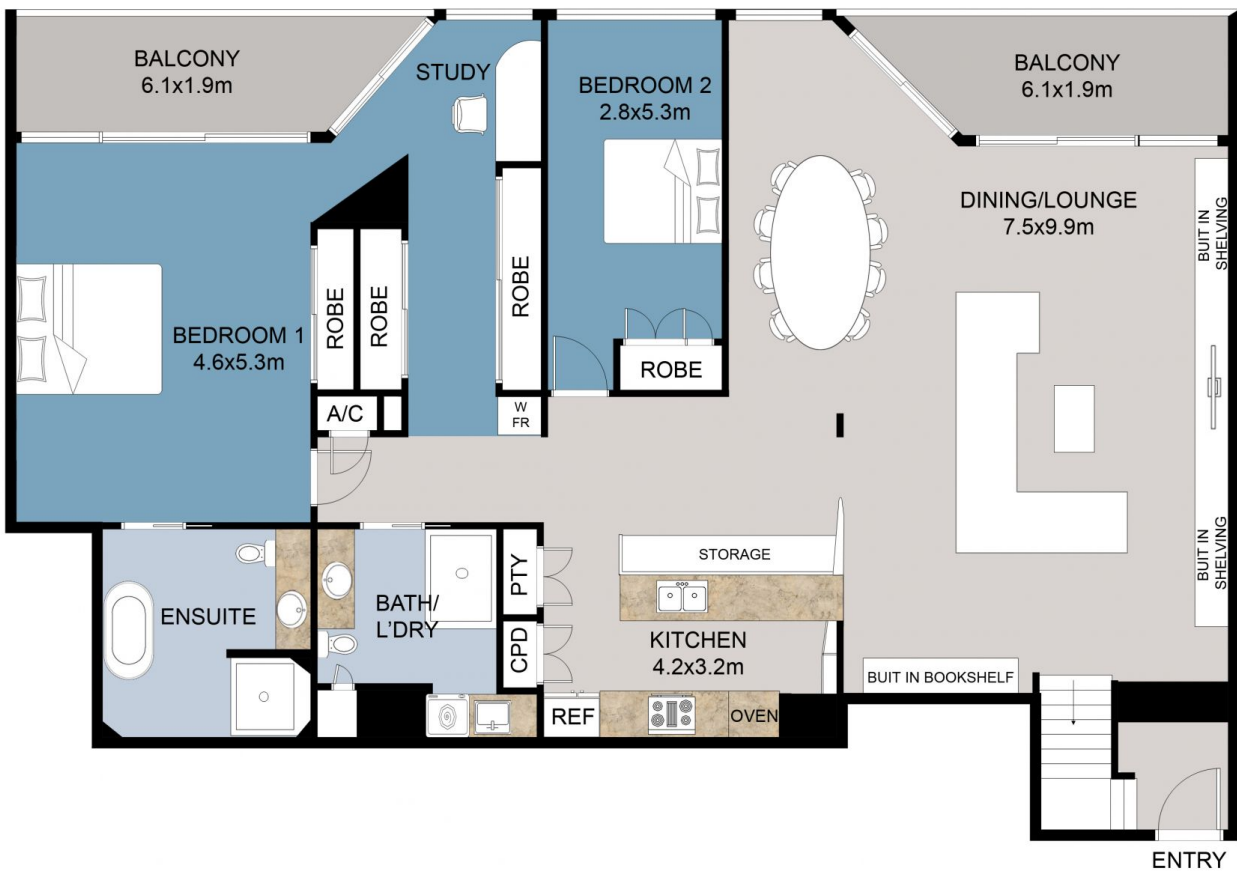
Christian Postiglione

📞 0400 074 525
✉ christian.postiglione@morton.com.au

morton.com.au



MARINA BERTH



FLOOR PLAN

This floor plan including furniture, fixture measurements and dimensions are approximate and for illustrative purposes only.
BoxBrownie.com gives no guarantee, warranty or representation as to the accuracy and layout.
All enquiries must be directed to the agent, vendor or party representing this floor plan.

410/6 Cowper Wharf Roadway Woolloomooloo NSW 2011