



# morton.

Woolloomooloo 506/22-40 Sir John Young Cres

1 1

Inner-city executive living is at its very best with views that stretch over the Domain to the CBD skyline. Set in the prestige well maintained 'Domain' building .

This smartly presented one bedroom apartment is light-filled with a spacious layout. A low-maintenance property just footsteps away from the heart of Sydney.

- A prime position on level 5 of a quality complex with concierge
- A light filled spacious open plan design
- Small balcony plus access to a large roof entertainment terrace
- Well-appointed kitchen, good-sized bathroom and internal laundry
- Resort facilities include a fully equipped gymnasium and spa
- Ducted air-conditioning, intercom entrance and lift access
- Great city base, easy access to Eastern Suburbs and North shore
- A brief stroll to the Botanic Gardens, Finger Wharf eateries,

[morton.com.au](http://morton.com.au)

### View

As advertised or by appointment

### Agents

#### Amanda Clement

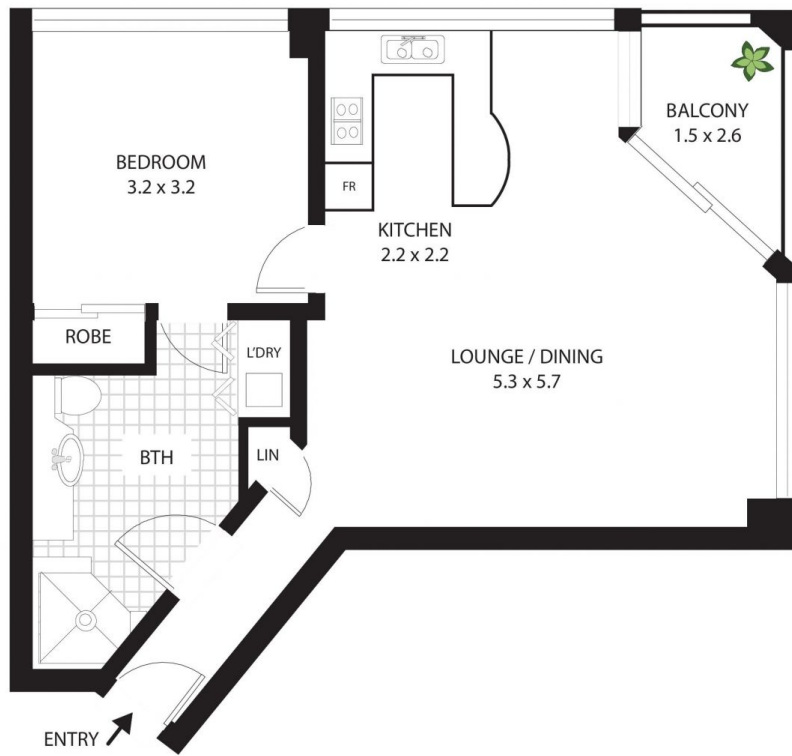
0448 016 404

[amanda.clement@morton.com.au](mailto:amanda.clement@morton.com.au)

#### Noel Jenkins

0410 593 694

[noel@morton.com.au](mailto:noel@morton.com.au)



506/22 Sir John Young Cres, Woolloomooloo

All measurements are approximate only. Plan is provided as an indication of layout

