



# morton.

**Sydney** 612/45 Shelley Street

🛏 2 🚿 2 🚗 1

In the heart of the prestigious King Street Wharf/Barangaroo precinct, this spacious apartment with a functional floor plan situated in the highly sought-after King Street Wharf complex offers vibrant harbour living. Luxuriously designed and just footsteps away from all the cosmopolitan amenities Sydney has to offer, this residence boasts contemporary finishes throughout including timber floorboards, modern stainless steel kitchen appliances and renovated bathrooms, with a rare and idyllic leafy outlook from all rooms.

- Two large light-filled bedrooms with mirrored built-ins
- Bedrooms with direct access to balcony
- Renovated tiled bathrooms and fittings with bathtub + internal laundry
- Sleek white kitchen, gas cooking, dishwasher
- Floor to ceiling windows in every room, wooden floors throughout
- Impressively well-proportioned open plan lounge/dining
- Stroll to waterfront restaurants and walks near Barangaroo Park

## View

As advertised or by appointment

## Agents

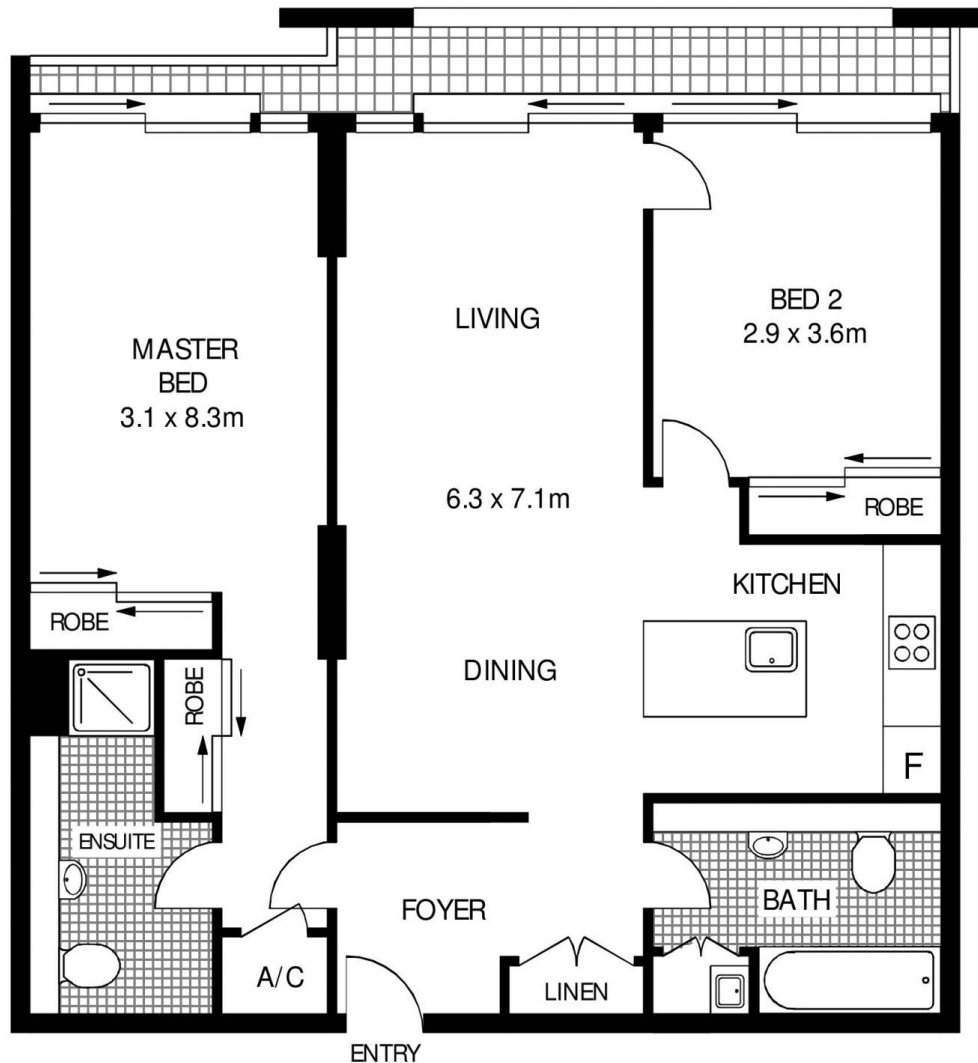
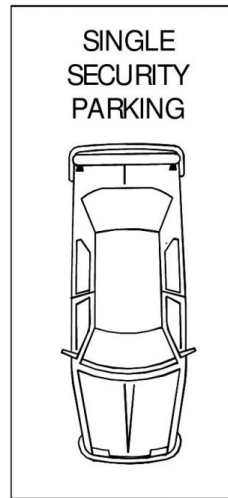
### Ettiene West

📞 0410 593 749  
✉ ettiene@morton.com.au

### Emma Ryan

📞 0409 325 440  
✉ emmar@morton.com.au

**morton.com.au**



**LEVEL 6**

**612/45 SHELLEY STREET**

**SYDNEY**

SCAPE Floor Planning Disclaimer: This floor plan is conceptual only. It is provided for illustrative purposes only and should not be relied upon. We make no guarantee as to the correctness of this plan. All interested parties should make and rely on their own enquiries in determining the accuracy of the information contained in this floor plan.