



# morton.

**Sydney** Level 23/298 Sussex Street

🛏 2 🚿 3 🚗 1

Occupying a prime north aspect with sweeping city views, this spacious split level apartment is flooded in natural light through floor to ceiling glass sliding doors. Located in the highly sought after 'Maestri Towers', this residence provides an idyllic opportunity for those who enjoys luxurious city living.

- North facing with 180 degree views from levels 23 & 24
- Light-filled, well proportioned open plan lounge and dining
- Spacious kitchen with granite benchtops and gas appliances
- Generous master bedroom with ensuite, built-ins and breathtaking views
- Air-conditioning, video intercom, large internal laundry and one large car
- Facilities include a pool, gym, spa and concierge
- Fully furnished to an exceptionally high standard

## View

As advertised or by appointment

## Agents

**Sarah Fowell**



📧 sarah@morton.com.au

**Christina Tsousta**

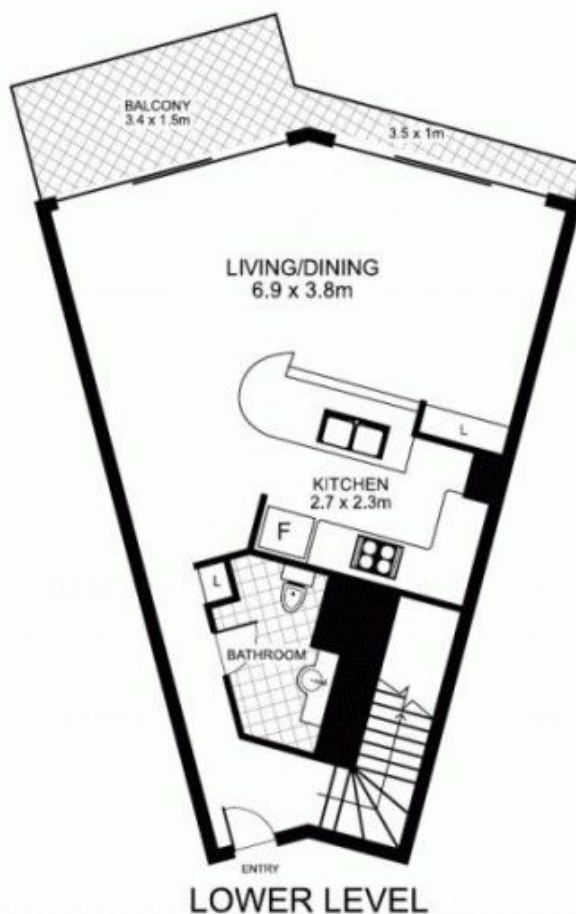
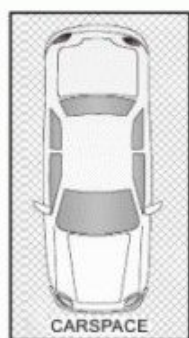
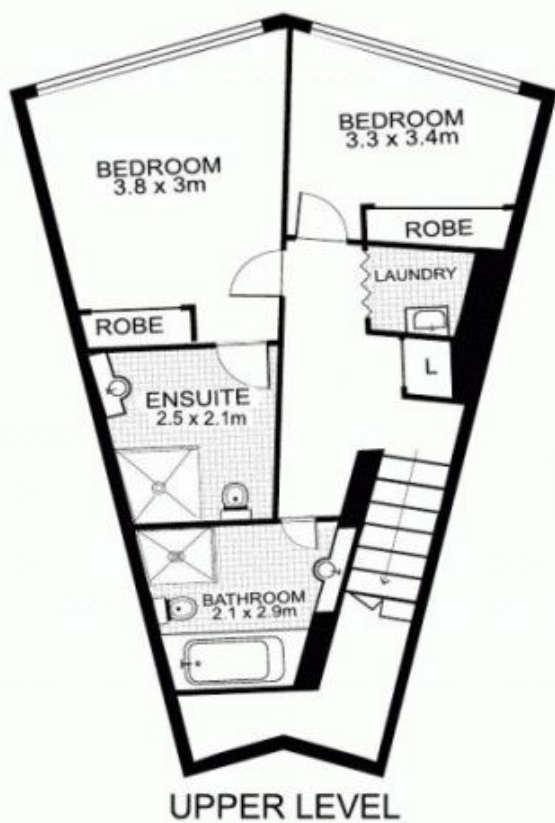


📞 0408 577 427

📧 christina.tsousta@morton.com.au

**morton.com.au**

## 364/298 Sussex Street, SYDNEY



morton.

This floor plan is intended as a guide only. Layout dimensions are approximate only. No representations or warranties of any nature whatsoever are given or intended. Any person using this information should rely on their own enquiries