



# morton.

Woolloomooloo 206/63 Crown Street

🛏 1 🚗 1 🚗 1

This north facing executive apartment is a rare find and enjoys spectacular views. Located in the magnificent Crown Gardens complex with resort style facilities, manicured gardens, elegant foyer and concierge this apartment will impress.

- Living/dining area flows onto entertainers' terrace
- Large bedroom with access to the balcony, timber floors
- Modern open plan kitchen with European appliances
- Full bathroom, internal laundry
- Secure underground parking with electric vehicle re-charging stations
- Storage cage
- Ducted a/c, video intercom
- Resort style facilities including pool, gymnasium & sauna
- 24 hr concierge
- Landscaped Gardens with BBQ facilities
- Designer foyer, visitor parking
- Exceptionally well maintained building with solar panels for sustainability and heating the water

### View

As advertised or by appointment

### Agents

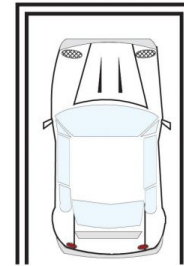
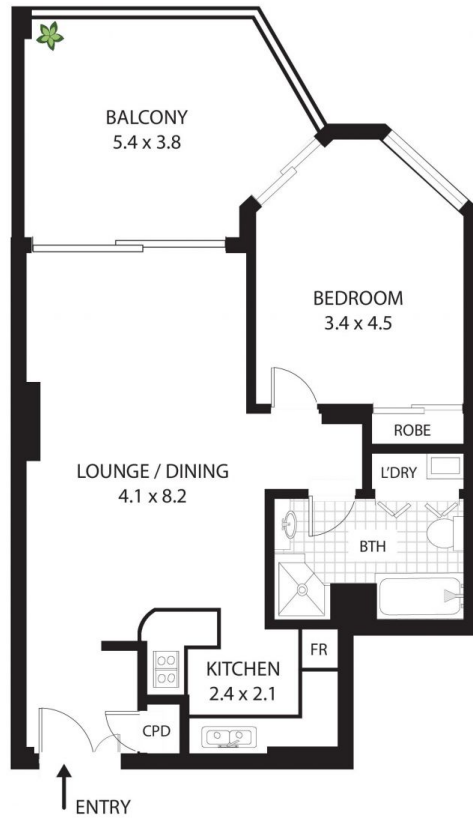
#### Amanda Clement

📞 0448 016 404  
✉ amanda.clement@morton.com.au

#### Noel Jenkins

📞 0410 593 694  
✉ noel@morton.com.au

[morton.com.au](http://morton.com.au)



SECURE  
CAR SPACE

NOTE: PRIVATE STORAGE CAGE

## 206/63 Crown Street, Woolloomooloo

All measurements are approximate only. Plan is provided as an indication of layout

