



**morton.**

**Woolloomooloo** 557/6 Cowper Wharf Roadway

 2  2

Capturing stunning views that flow across the water and Garden Island to historic Potts Point and filled with morning sunshine throughout, this is a lifestyle offering like no other. Occupying a prized upper level position, this magnificent loft-style apartment is the epitome of quality and substance.

- Carefree contemporary living with superb finishes
- Sleek granite kitchen complete with gas appliances
- Euro laundry, ducted air conditioning, 24 hr security
- Skylights, vaulted ceilings and open plan entertaining
- Spacious mezzanine level master with built ins, ensuite
- Merely metres to a vibrant waterfront culinary scene

**View**

As advertised or by appointment

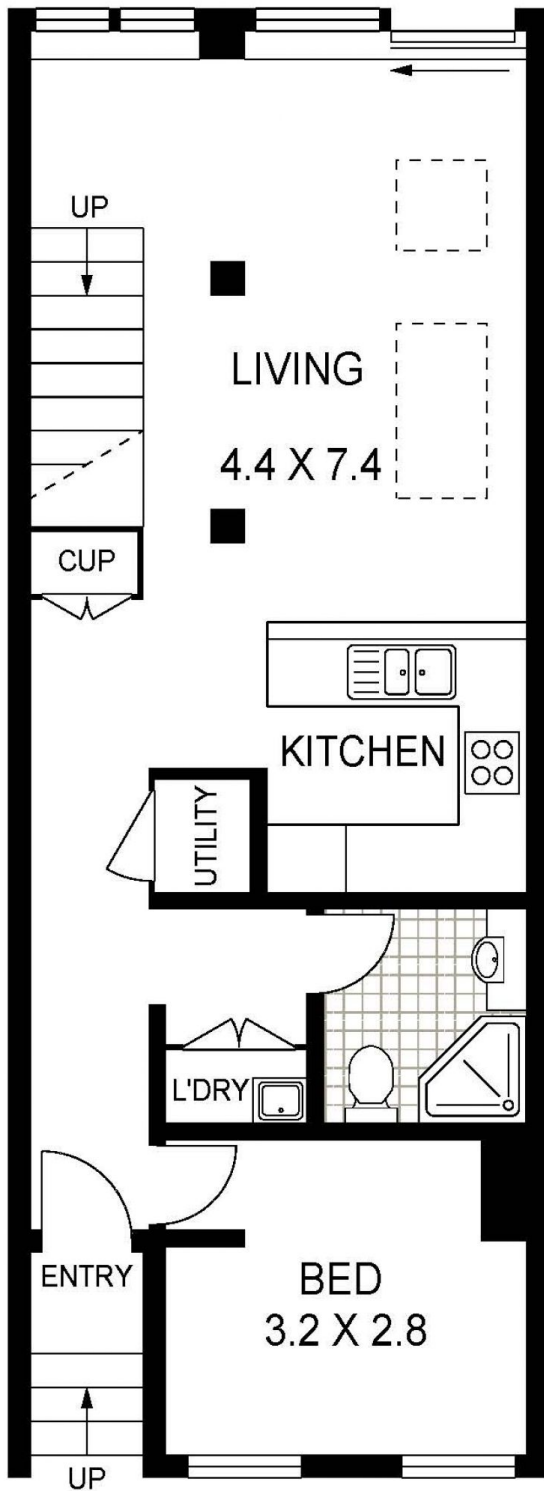
**Agent**

**Christian Postiglione**

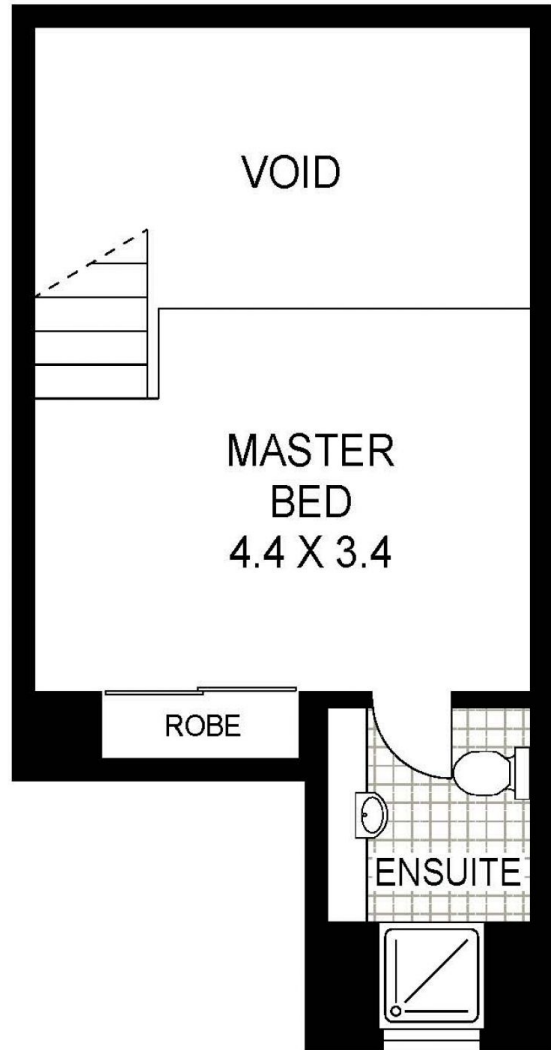
 0400 074 525

 christian.postiglione@morton.com.au

**morton.com.au**



LEVEL FIVE



LOFT LEVEL



**557/6 COWPER WHARF ROAD WOOLLOMOOLOO**

Floor Plan Disclaimer: Mind the Gap (mtg) floor plans / site plans are intended as a guide only. No representations or warranties of any nature whatsoever are given or intended and any person using this information should always rely on their own enquiries. mtg property marketing services - 1300 133 145 - photography, floor plans, virtual tours, video tours, copywriting, project marketing - [www.mindthegap.com.au](http://www.mindthegap.com.au)