



morton.

Sydney 1002/148 Elizabeth Street



Hiding in the "Hyde Park Towers" just footsteps away from Museum Station, Hyde Park itself and vibrant scope of city amenities and entertainment options, this studio apartment offers perfect hideaway yet close proximity to all Sydney CBD and Surry Hills has to offer. This studio apartment with generous terrace overlooking heritage Downing Centre is an ideal spot to take in city life while enjoying gorgeous Sydney urban and heritage views.

- Generous partially enclosed terrace with urban views
- Large laundry for ample storage
- Cosy kitchen with recent updates
- 24h security and building manager on site
- Facilities include gym, pool, spa and sauna
- Close to transport, Surry Hills and entertainment options

Quarterly outgoings:

Water: \$166.82 p/q approx.

morton.com.au

View

As advertised or by appointment

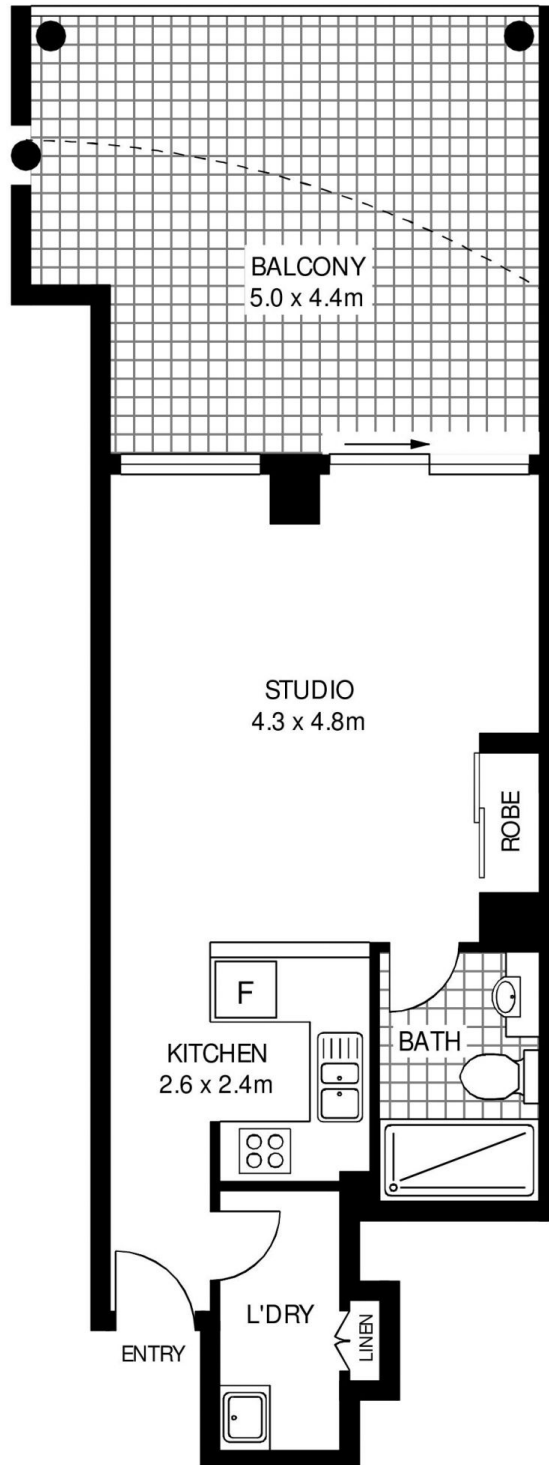
Agents

Ettiene West

📞 0410 593 749
✉️ ettiene@morton.com.au

Emma Ryan

📞 0409 325 440
✉️ emmar@morton.com.au



LEVEL 10



1002/142 ELIZABETH STREET

SYDNEY

SCAPE Floor Planning Disclaimer: This floor plan is conceptual only. It is provided for illustrative purposes only and should not be relied upon. We make no guarantee as to the correctness of this plan. All interested parties should make and rely on their own enquiries in determining the accuracy of the information contained in this floor plan.