



# morton.

**Luddenham** 58 Portrush Crescent

6 3 4

Built with outdoor living in mind, this resort-style single level home of grand proportions makes the most of its one-acre block and spectacular views over the Graham Marsh designed parkland golf course. Wrapped around a private internal courtyard with a sparkling blue pool and spa as its centrepiece, the oversized floorplan provides multiple living zones that are equally contemporary and luxurious and perfect for a cross-generational family.

- Sleek gourmet kitchen with state-of-the-art appliances, huge island bench, and walk-in butler's pantry
- Impressive all-weather alfresco dining and lounge fitted with BBQ, fridge, and gas fireplace
- Huge bifold doors link the alfresco area with the beautifully landscaped gardens
- Master suite with his and hers walk in wardrobe and large ensuite
- All bedrooms are generously proportioned with built-in robes and garden/pool views
- Studio/rumpus with separate entrance, may also be used as

## View

As advertised or by appointment

## Agents

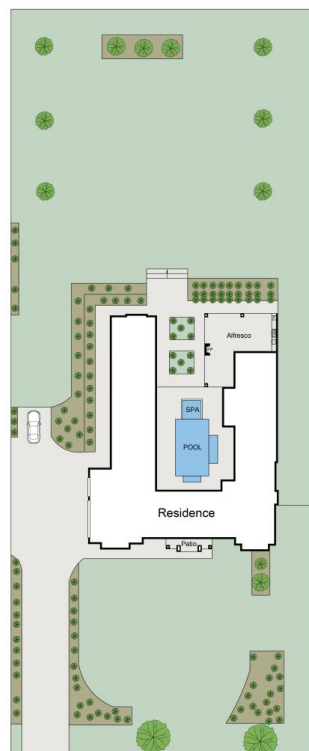
### Konstantin Melnikov

0421 540 424  
konstantin@morton.com.au

### Ferenc Goemoeri

0447 025 423  
ferenc@morton.com.au

**morton.com.au**



## 58 Portrush Crescent, Luddenham



Every care has been taken to verify the accuracy of the details and dimensions in this property plan. Prospective purchasers are advised to make their own enquiries to satisfy themselves in all respects. The plan is a representation only and is not necessarily to scale.