



morton.

Penrith 506/60 Lord Sheffield Circuit

🛏 2 🚿 2 🚗 1

A sleek easy-living apartment stylishly appointed for executive living, this designer Wildwood Apartments residence is positioned in the highly acclaimed Thornton Estate master-planned community. Crisp, contemporary and featuring tranquil park views, it captures the essence of style and quality with ultra modern finishes, good natural light and an entertainer's terrace.

- 93sqm of open plan living and dining with perfect oval outlooks
- Large double bedrooms with mirrored built-in robes plus a study area
- Quality gas kitchen with island bench, dishwasher and AEG appliances
- Well-proportioned designer bathroom plus internal laundry with dryer
- Split system air-conditioning and intercom entry and 2 lifts to the building
- Rooftop BBQ terrace with seating areas and panoramic views to Mountains

morton.com.au

View

As advertised or by appointment

Agents

David Lipman

📞 0409 663 535
✉ david@morton.com.au

SJ Singh

📞 0417 085 519
✉ sj.singh@morton.com.au



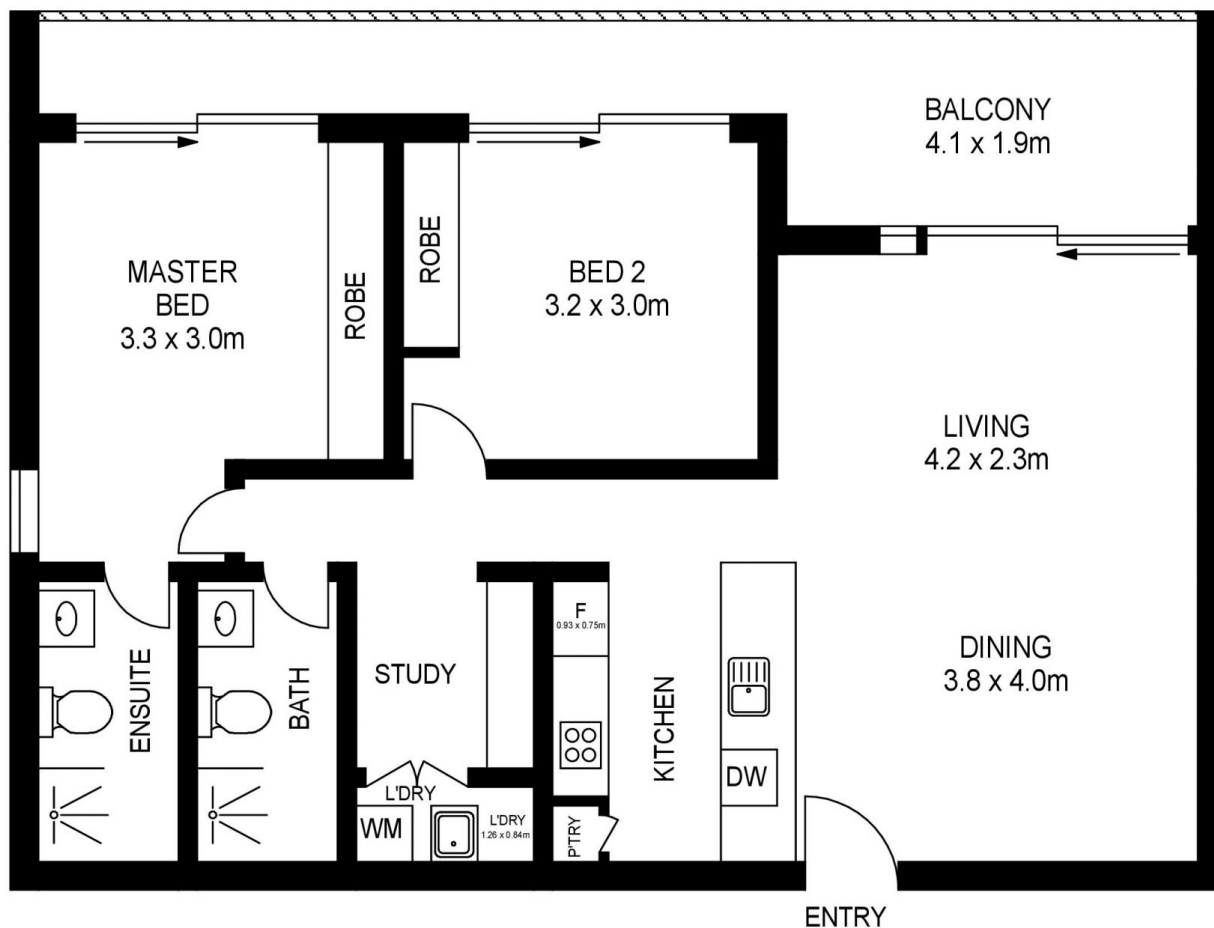
NO'506
CAR SPACE



NO'506
STORAGE
CAGE

LEVEL B1

LEVEL B1



APPROX. INT. AREA	:	85 m ²
APPROX. EXT. AREA	:	8 m ²
TOTAL AREA INCLUDING CAR SPACE & STORAGE CAGE	:	107 m ²

506/60 LORD SHEFFIELD CIRCUIT, PENRITH



www.assetphotographers.com.au

Please note these measurements are approximate only. The plans are intended as a rough guide for illustrative purpose. It is not warranted or guaranteed to be correct nor is it part of the sale or rental contract.