



morton.

Wentworth Point 302/12 Half Street

🛏 1 🚗 1 🚗 1

Smart design and a premium bayside location ensure this generous one-bedroom apartment delivers a fantastic lifestyle with local shopping, cafés and the water's edge literally footsteps from the front door. It features a fresh single-level layout that provides an easycare executive home with chic modern interiors and a great sense of style in the architectural Yukon complex by Sekisui.

- A well-designed floorplan with a separate study/media area
- Generous open plan layout with a bright and airy living space
- An easy flow to a good-sized balcony ideal for entertaining
- Designer kitchen featuring stone benches and a gas cooktop
- A well-sized bedroom, modern bathroom and built-in storage
- Secure basement car space and storage cage with easy lift access
- Sleek polished floors, air-conditioning and crisp white decor
- A pet-friendly building with central gardens and swimming pool

View

As advertised or by appointment

Agents

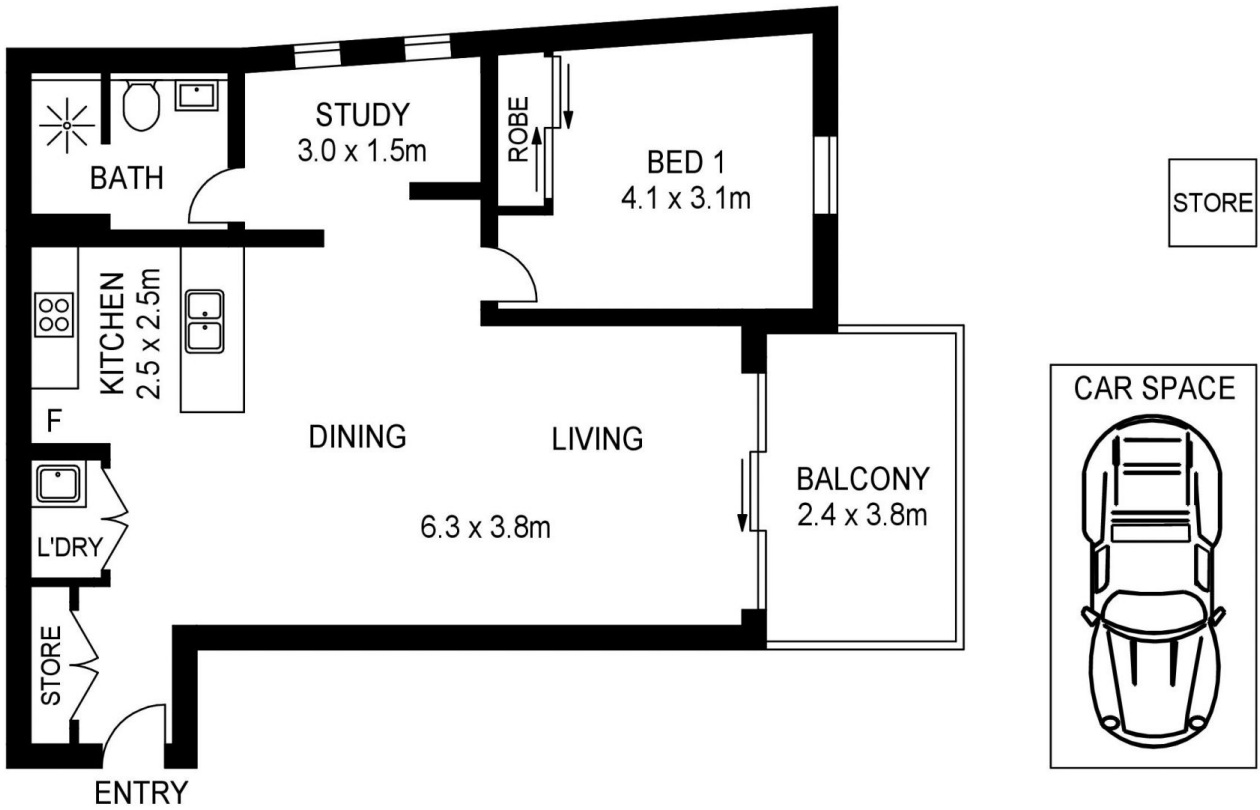
Dylan Choe

📞 0416 932 977
✉ dylanchoe@morton.com.au

Vivian Zhang

📞 0447 964 200
✉ vivian@morton.com.au

morton.com.au



302/12 HALF STREET, WENTWORTH POINT



www.assetphotographers.com.au

Please note these measurements are approximate only. The plans is intended as a rough guide for illustrative purpose. It is not warranted or guaranteed to be correct nor it is part of the sale or rental contract