



# morton.

**Wentworth Point** 601/4 Nuvolari Place

 1  1  1

An emphasis on good interior proportions, smart contemporary finishes and chic presentation makes an instant impact in this stylish 'Palermo' apartment. Its bright and airy layout has been well-designed to provide an easycare home with lots of natural light, easy in/outdoor living and a prime sixth floor position that captures the views of the peaceful and landscaped gardens.


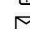
- Bright open design with generous living and dining areas
- Freshly painted and quality new carpeting throughout
- A large entertainment terrace with leafy green outlooks
- Great-sized double bedroom that opens onto the balcony
- Modern kitchen with stone benchtops and gas fittings
- Air-conditioning, intercom lift, NBN equipped plus a secure car space
- Residents' access to the building's outdoor pool and BBQ area

### View


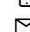
As advertised or by appointment

### Agents

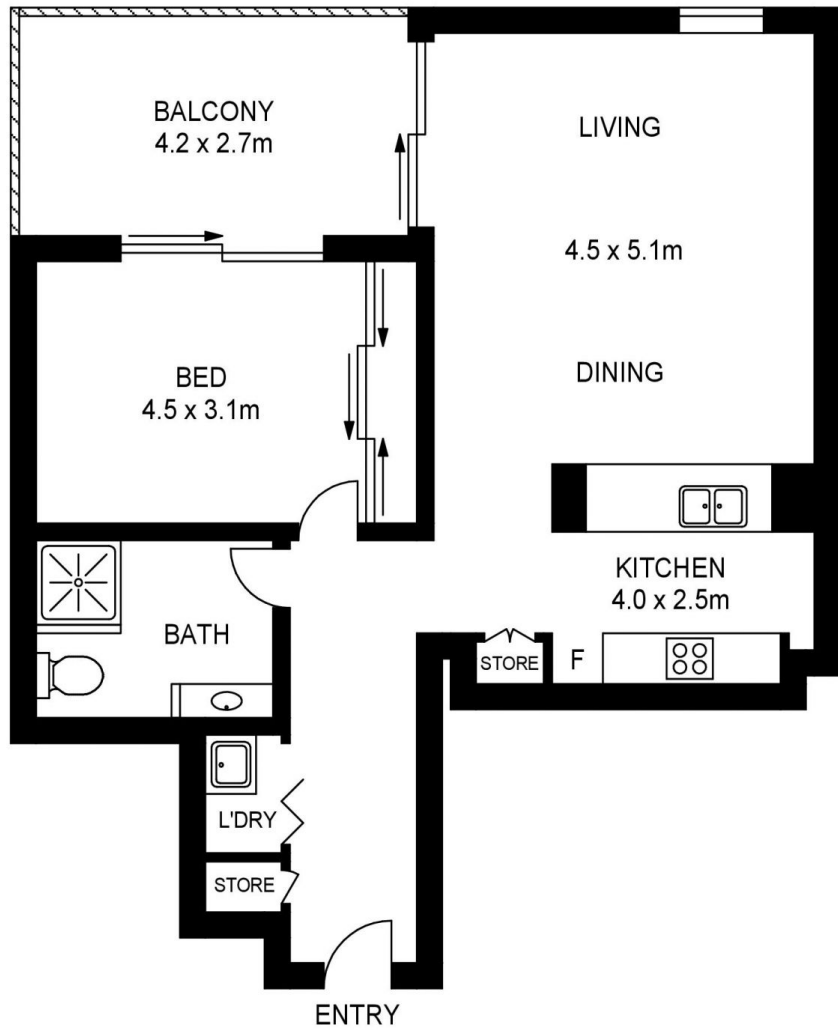
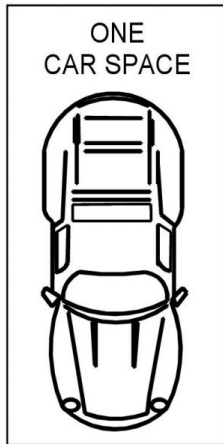
#### Dylan Choe

 0416 932 977  
 dylanchoe@morton.com.au

#### Akanksha Chaudhari

 0447 201 786  
 akanksha@morton.com.au

[morton.com.au](http://morton.com.au)



## 601/4 NUVOLARI PLACE, WENTWORTH POINT



[www.assetphotographers.com.au](http://www.assetphotographers.com.au)

Please note these measurements are approximate only. The plans is intended as a rough guide for illustrative purpose. It is not warranted or guaranteed to be correct nor it is part of the sale or rental contract