



morton.

Wentworth Point J15080/17 Amalfi Drive

 2  2  1

In the ultimate lifestyle location, this bright and airy apartment is ideally situated on the top floor of a sought-after waterside building, and on the doorstep to the vibrant cafes, the ferry wharf and resort facilities offered by The Waterfront. It features a light-filled open layout with good quality finishes, lots of natural light and elevated views that stretch over Bay Park and out to the water.



- Bright skylit open design with distinct living and dining areas
- Wide entertainment balcony and leafy views over Bay Park
- Two double-sized bedrooms set at opposite ends of the floorplan
- Modern designer kitchen equipped with good-quality gas fittings
- Two modern bathrooms, internal laundry and built-in storage
- Air-conditioning, lift access, and secure intercom entrance
- Security basement car space plus personal caged storage
- Access to the Pulse Club swimming pools, tennis, gym and library

View



As advertised or by appointment

Agents

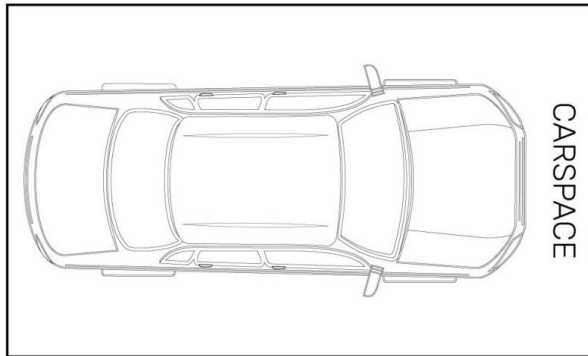
Vivian Zhang

 0447 964 200
 vivian@morton.com.au

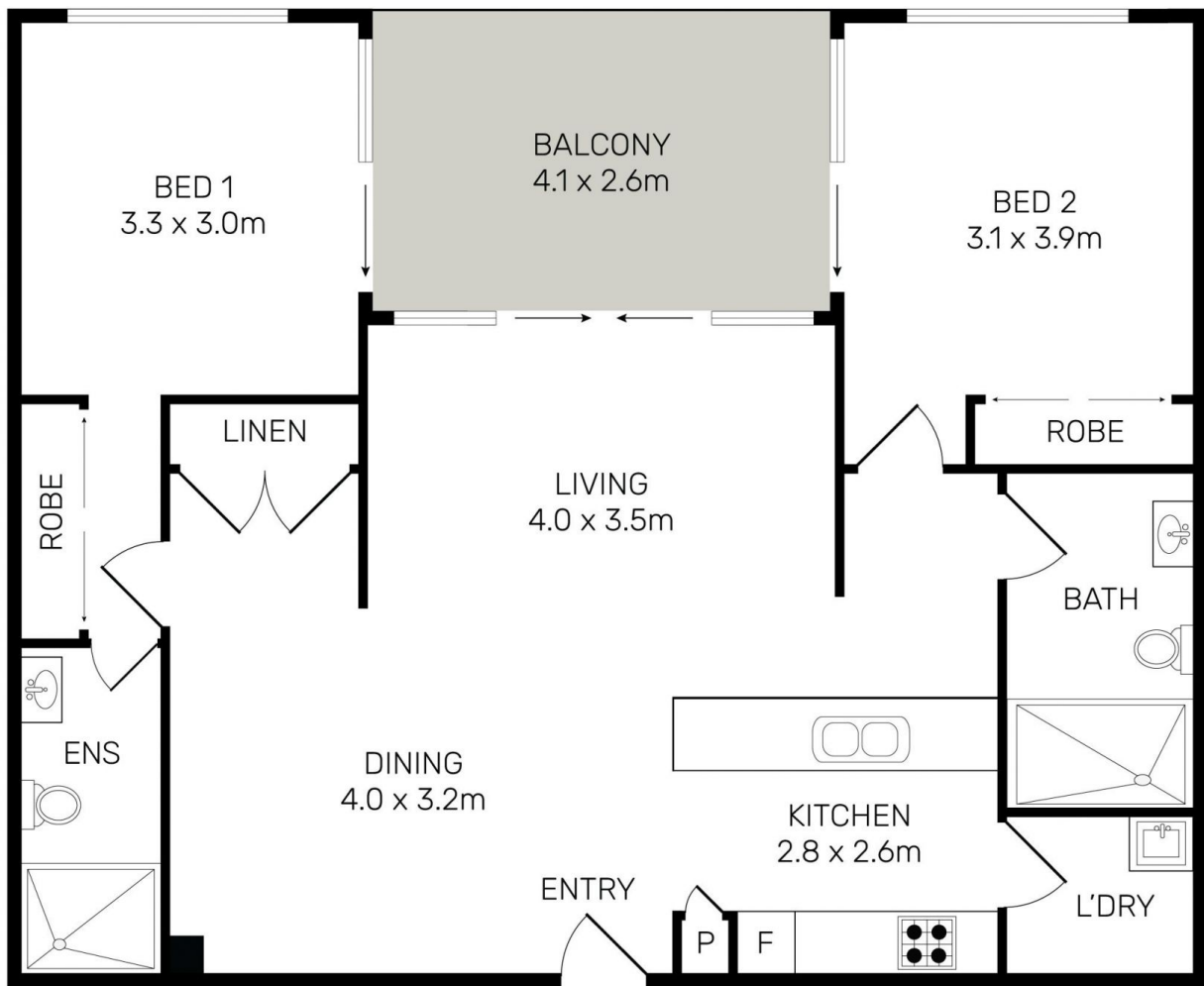
Dylan Choe

 0416 932 977
 dylanchoe@morton.com.au

morton.com.au



STORAGE
2sqm



All information contained herein is gathered from all sources we believe to be reliable. However we cannot guarantee its accuracy and interested parties should rely on their own enquiries.

J15080/17 Amalfi Drive Wentworth Point