



morton.

Pyrmont 712/50 Murray Street

 3  2  2

Architecturally designed to emulate a window to the world, this unique 3 bedroom 'round-house' apartment at the eminent One Darling Harbour building boasts dazzling panoramic views over Sydney Harbour and Cockle Bay. With a "no expense spared" bespoke renovation it boasts generous home-like proportions, immaculately presented interiors and 5 star resort facilities ensure a desirable city lifestyle within Sydney's most vibrant harbour-side precinct.

- Rare circular combined living area, featuring floor-to-ceiling windows
- Two balconies, perfectly placed for spectacular harbour and city views
- Gourmet kitchen with island breakfast bar and granite benchtops
- Spacious bedrooms, all with built-ins and balcony access
- Master bedroom ensuite with twin vanities, separate bath and shower
- Well appointed main bathroom and additional guest powder room

morton.com.au

View

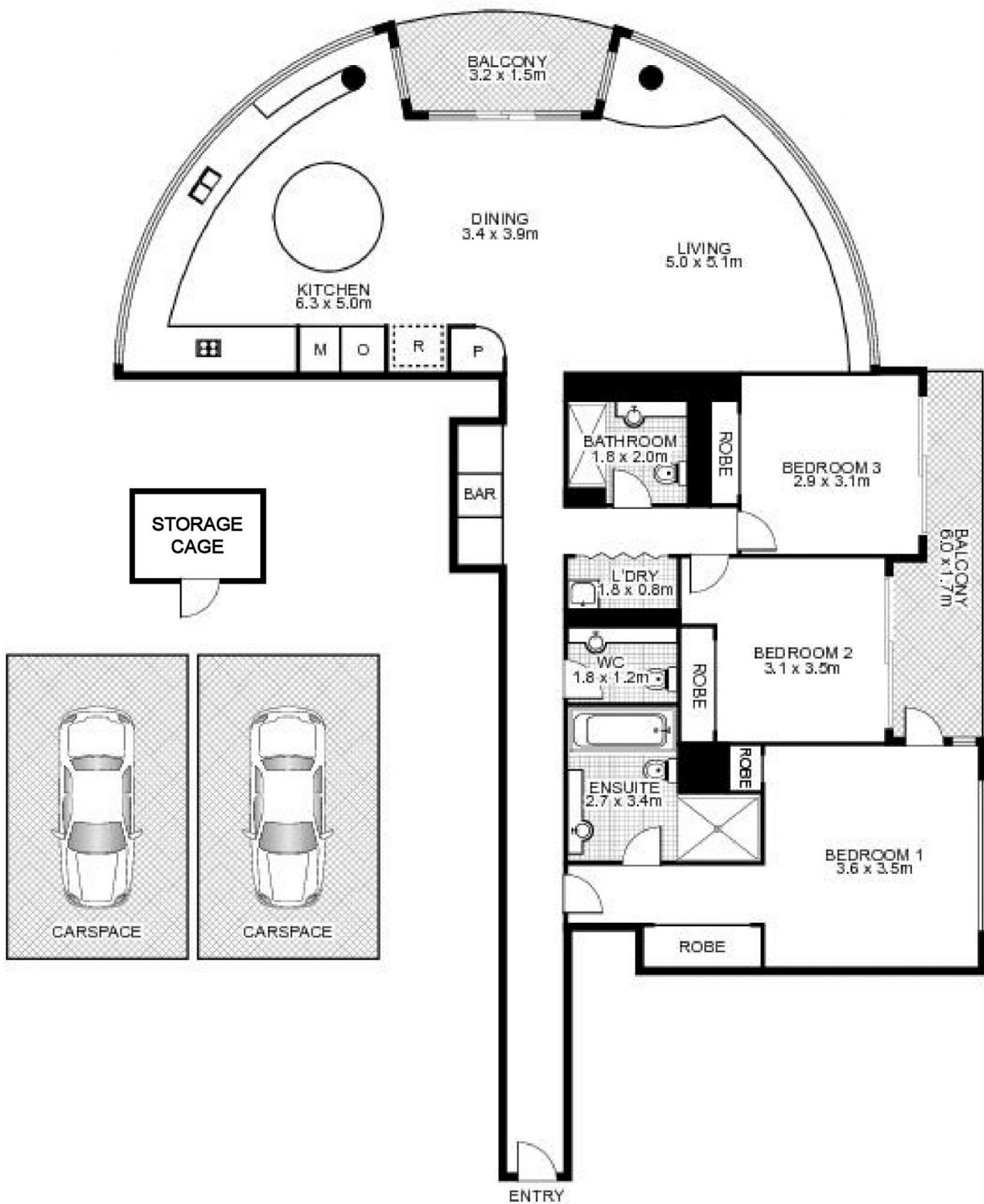
As advertised or by appointment

Agent

James Crow

 0410 593 057

 james@morton.com.au



712, 50 Murray Street, PYRMONT



This floor plan is intended as a guide only. Layout dimensions are approximate only. No representations or warranties of any nature whatsoever are given or intended. Any person using this information should rely on their own enquiries. Floor Plans by SURROUNDPIX.