

morton.

Zetland 616/5 O'Dea Avenue

 2  1  1

In the heart of the immensely popular Zetland community just minutes to the city and airport, this deluxe two-bedroom residence displays contemporary sparkle and easy convenience. It sits in an elevated position with city views and features a generous single level floorplan that's ideally configured to meet the needs of low maintenance lifestyle seekers.

- Modern kitchen with gas cooking, dishwasher and Smeg appliances
- Sizeable open plan living/dining area flowing onto large enclosed balcony
- Two double bedrooms with built in wardrobes
- Large sleek bathroom with shower
- New floating floorboards and freshly painted throughout
- Internal laundry, air conditioning and undercover car space for 1 car
- Luxurious heated rooftop pool (exclusive access to Building 1 only), lap pool and Balinese styled pool with heated jacuzzi
- 24 Hour security within entire Emerald Park complex

morton.com.au

View

As advertised or by appointment


Agents

Kristian Karaspyros

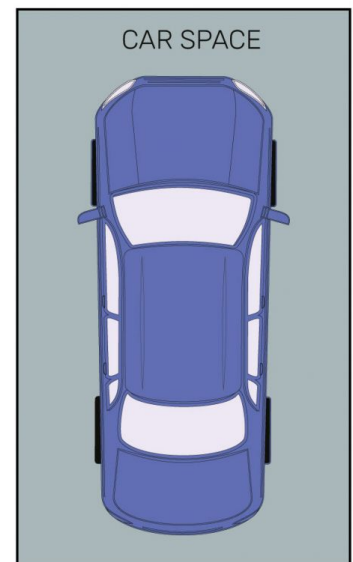
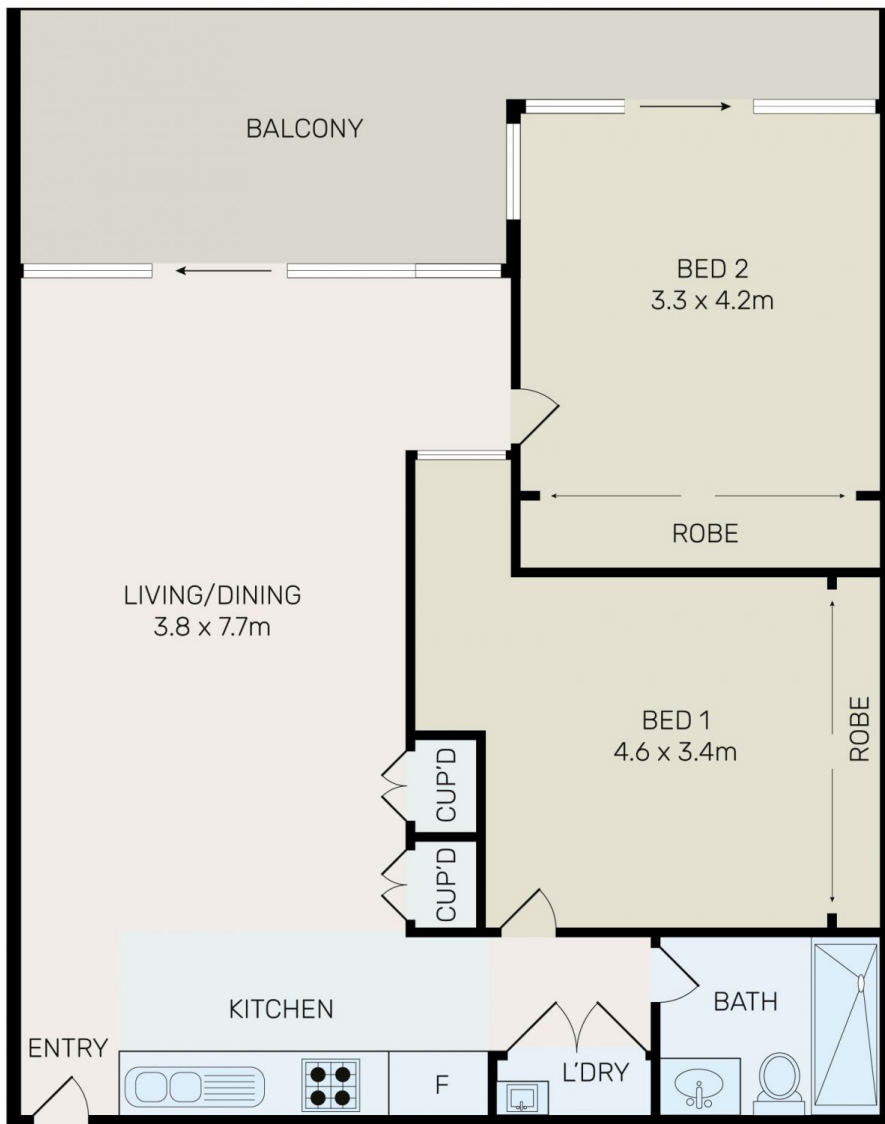
 0436 477 102

 kristian.karaspyros@morton.com.au

Nicole Beckett

 0409 896 152

 rentals@morton.com.au



All information contained herein is gathered from all sources we believe to be reliable. However we cannot guarantee its accuracy and interested parties should rely on their own enquiries.



CampaignPROS

morton.

Zetland 616/5 O'dea Avenue