



morton.

Pyrmont 601/135 Point Street

3 2 2

Supremely well-located and capturing panoramic views over the Jacksons Landing precinct, this spacious three-bedroom retreat holds lots of appeal for those on a quest for a well-connected low-maintenance home with plenty of room to move. Generous interiors offer the perfect balance of space, quality and light-filled design, with a flowing single-level floorplan offering 153sqm of living space and excellent flexibility.

- Light-filled north aspect enhanced by floor-to-ceiling windows
- Well-designed layout featuring open lounge and dining areas
- Two covered balconies and views that stretch to the Anzac Bridge
- A quality gas kitchen plus two marble bathrooms and laundry
- Level lift access to two security car spaces in the basement
- Recently refreshed with new hardwood floors and fresh paint

- Ducted air-conditioning, C-Bus lighting and a gas fireplace
- A rooftop area with gym, swimming pool and poolside sundeck

View

As advertised or by appointment

Agents

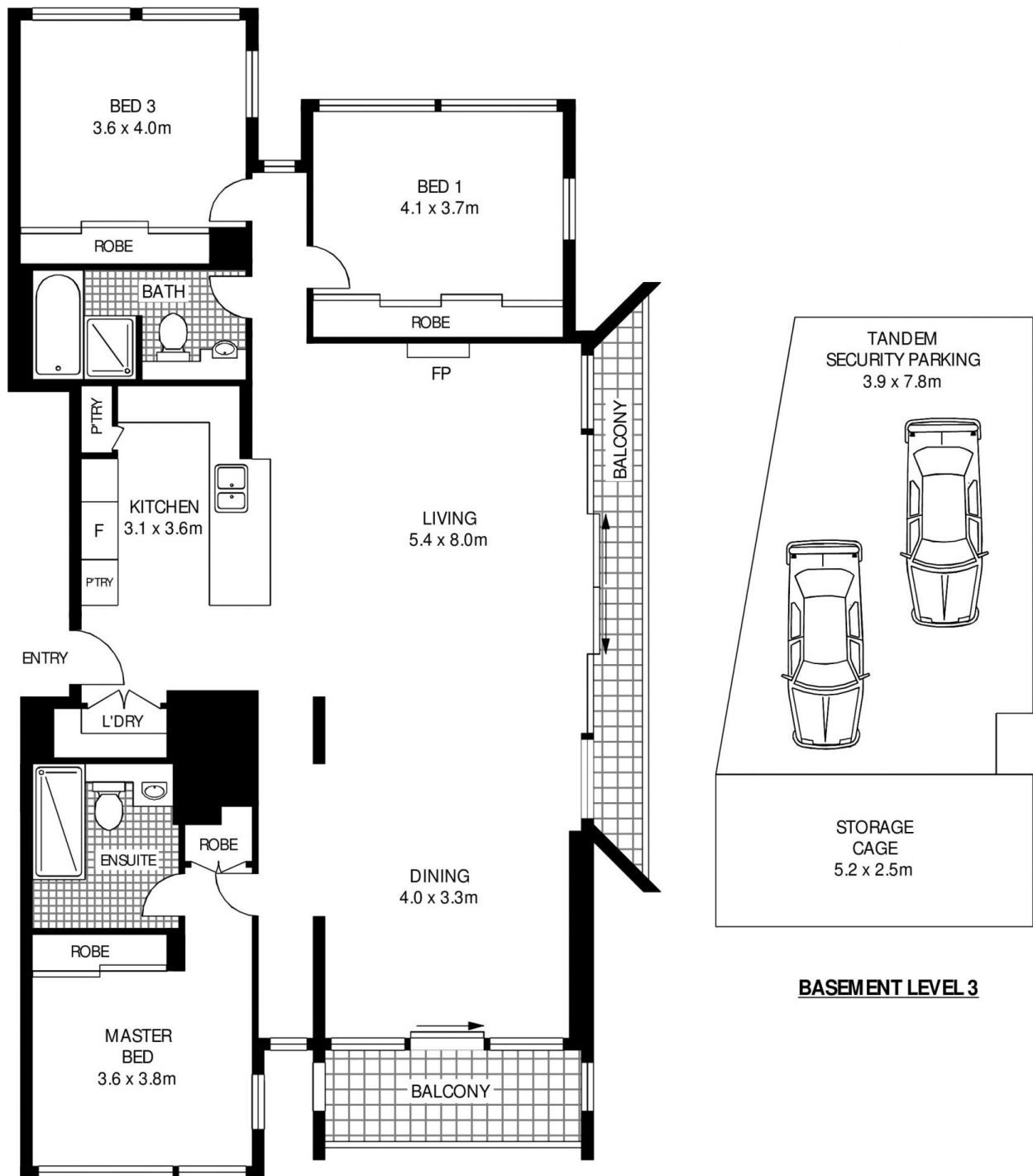
Ian Qiu

0447 696 425
 ian@morton.com.au

Naomie Texier

0439 247 710
 naomie@morton.com.au

morton.com.au



LEVEL 6



601/135 POINT STREET

PYRMONT

SCAPE Floor Planning Disclaimer: This floor plan is conceptual only. It is provided for illustrative purposes only and should not be relied upon. We make no guarantee as to the correctness of this plan. All interested parties should make and rely on their own enquiries in determining the accuracy of the information contained in this floor plan.