



morton.

Pyrmont 315/50 Murray Street

 2  2  1

This outstanding apartment offers convenience and luxury, with a breathtaking outlook of the City skyline and Darling Harbour set in the prestigious One Darling Harbour building.

- Enjoy panoramic harbour views throughout
- Spacious open plan living and dining which flows onto covered balcony
- Contemporary kitchen, stainless steel appliances with dishwasher
- Master bedroom with en suite and separate walk in robe
- Second bedroom with built-ins
- Main bathroom with full bath and internal laundry
- Air-conditioned and secure parking
- Resort facilities including a rooftop heated indoor pool, sauna and spa
- Gymnasium and private rooftop terrace, 24/7 concierge

View

As advertised or by appointment

Agent

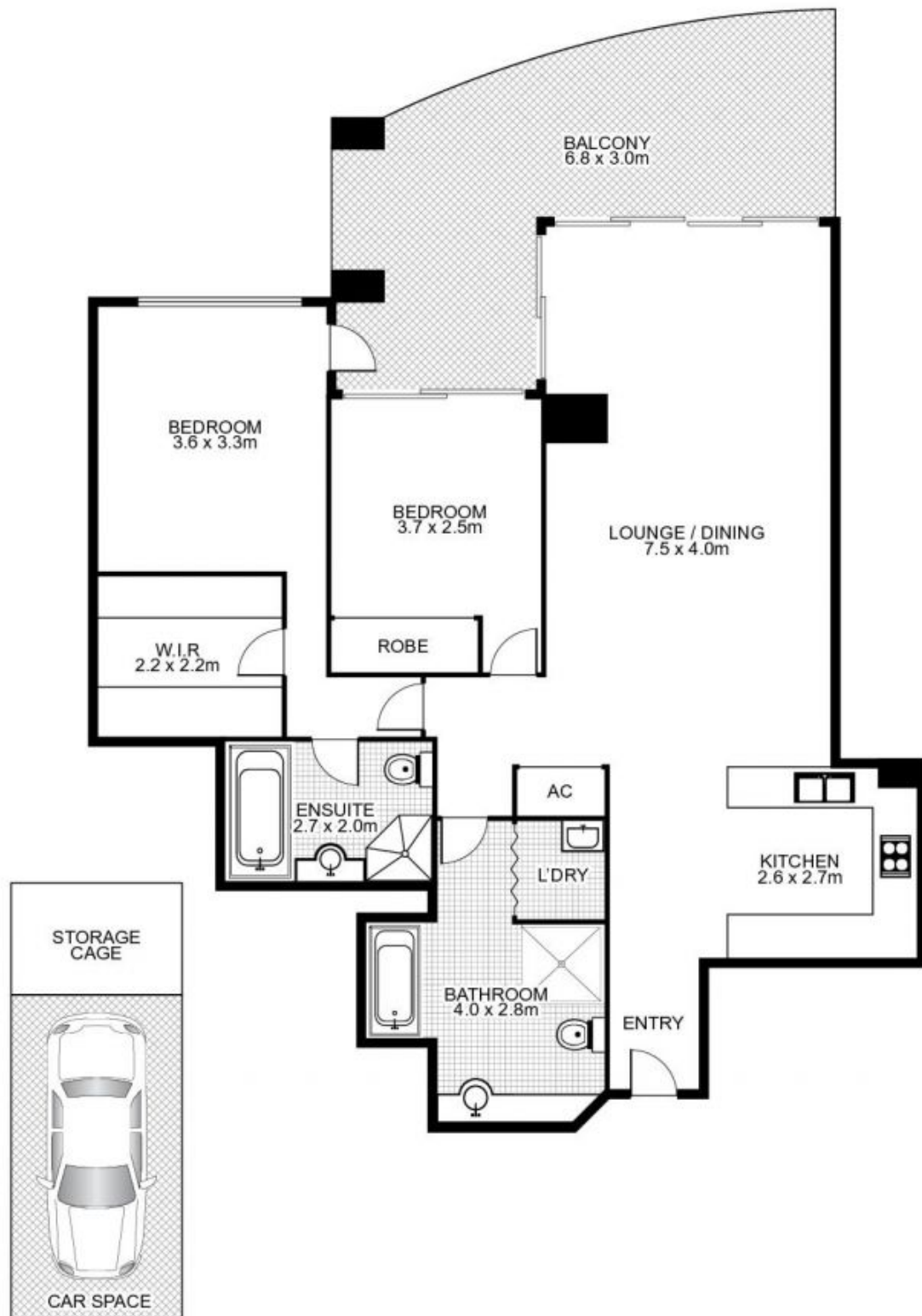
Christina Tsousta

 0408 577 427

 christina.tsousta@morton.com.au

morton.com.au

315/50 Murray Street, PYRMONT



This floor plan is intended as a guide only. Layout dimension are approximate only. No representation or warranties of any nature whatsoever are given or intended. Any person using this information should rely on their own enquiries.