



morton.

Ryde A903/41 Belmore Street

🛏 2 🚿 2 🚗 1

Offering the perfect easy-living lifestyle home, this generous residence's sleek interiors and low-maintenance design are highlighted by a relaxing leafy outlook over the treetops. Style, space and quality feature throughout this modern apartment that's set within a sought-after riverside pocket in a peaceful community environment that's literally footsteps to parklands and the water's edge.

- Bright and airy open design with lounge and dining spaces
- Large floor-to-ceiling windows highlight sunshine and views
- Wide covered balcony off the living area and main bedroom
- Two double bedrooms, built-ins and a separate study space
- Modern stone kitchen with top-of-the-range gas appliances
- Security car space, lock-up storage, intercom and air-con
- Short walk to community shops, village cafes and amenities

View

As advertised or by appointment

Agents

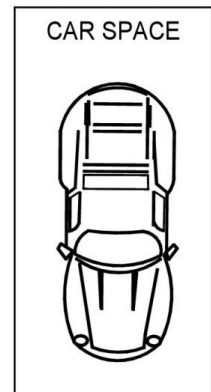
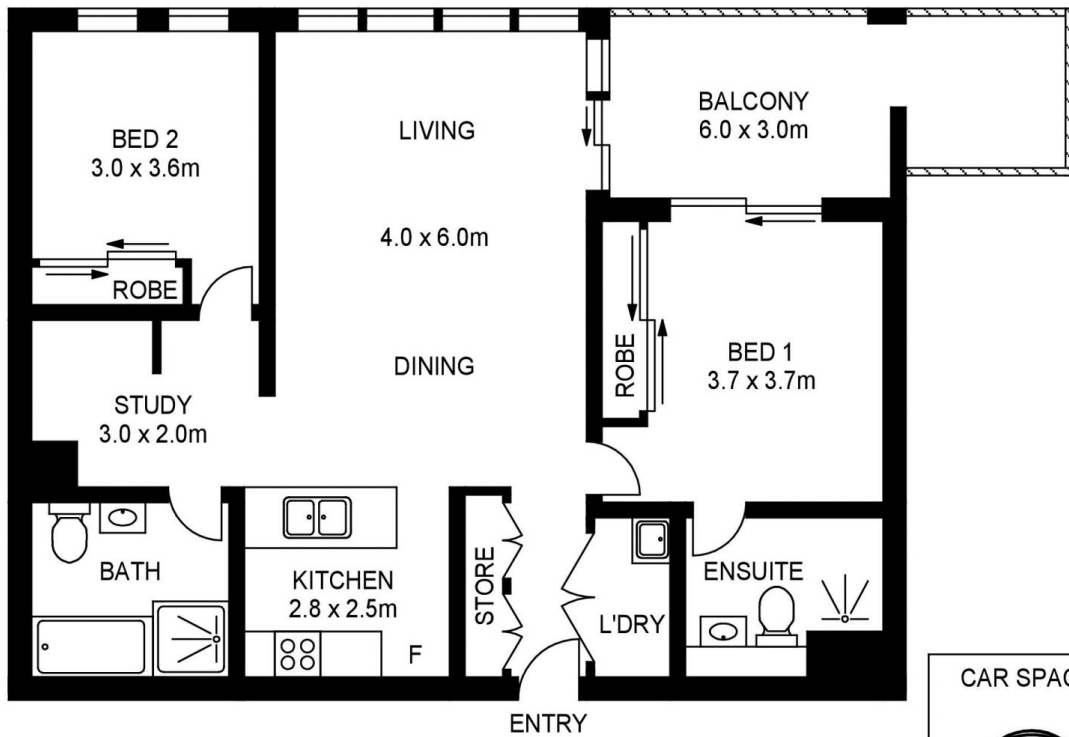
Dylan Choe

📞 0416 932 977
✉ dylanchoe@morton.com.au

Vivian Zhang

📞 0447 964 200
✉ vivian@morton.com.au

morton.com.au



APPROX. INT. AREA : 86m²
APPROX. EXT. AREA : 13m²
TOTAL AREA INCLUDING CAR SPACE AND STORAGE : 114m²

903/41-45 BELMORE STREET, RYDE



www.assetphotographers.com.au

Please note these measurements are approximate only. The plans is intended as a rough guide for illustrative purpose. It is not warranted or guaranteed to be correct nor it is part of the sale or rental contract