

**morton.**

**Penrith** 309/81A Lord Sheffield Circuit

 1  1  1

Located in the hub of North Penrith, Thornton offers convenient apartment living in a master planned community only metres from the Penrith rail hub, Westfield shopping centre and local parks.

#### Features

- Large covered east facing balcony with garden views
- Eat-in kitchen with stone benchtops, soft close cupboards
- Gas stove top with stainless steel appliances, dishwasher
- LED lighting, reverse cycle A/C, internal laundry with dryer
- Open living and dining with engineered timber flooring
- Wool-blend carpeted bedrooms, mirrored built-in robes
- Quality bathroom/ensuite with mirrored vanity cabinet

#### View

As advertised or by appointment

#### Agent

**Amy Torbarina**

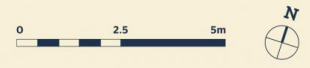
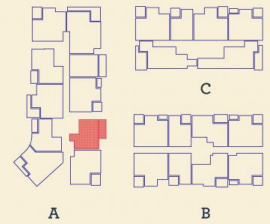
 0438 977 172

 amy@morton.com.au

[morton.com.au](https://morton.com.au)

*Apartment*

1 BED- A 309



Internal	53 m <sup>2</sup>
External	11 m <sup>2</sup>
<b>Total</b>	<b>64 m<sup>2</sup></b>

DATE ISSUED 27/07/2015  
VERSION 02

Developed by St Hilliers FIRST POINT PROJECTS | Sales by LINK Home Land Direct [thorntoncentral.com.au](http://thorntoncentral.com.au)

**Disclaimer:** This floor plan has been prepared for marketing purposes only. All descriptions, dimensions, depictions and other details in this floor plan together, the "Information" may not be to scale. The vendor reserves the right to vary or amend the Information without notice. The Information may vary from the actual dimensions, layout and characteristics of the property as built. No third party has any authority whatsoever, either expressly or impliedly, to make or give any representation or warranty or to bind the vendor in connection with the information or the property.

**THORNTON**