



# morton.

**Rouse Hill** 13 Peppin Street

 3  2  1

Here is your opportunity to reside in the esteemed New Rouse Hill Estate at Caddies Place, with this new to market two storey, three bedroom family home. Most conveniently located to all the essentials Rouse Hill has on offer, you'll be positioned footsteps to Rouse Hill Town Centre, local schools, and just minutes to Rouse Hill Metro Station accessing the Sydney Metro Northwest train line, all while enjoying the connected community lifestyle this property and estate boasts. This ultra-low maintenance abode is ideally suited for young families and working professionals.

- Large open plan living and dining room off kitchen, flowing to undercover alfresco entertainer's terrace
- Stone bench kitchen with premium stainless steel appliances and gas cooktop
- Ceiling fans in every room and ducted air conditioning throughout
- Study nook, an ideal space for the home office or kids' study
- Three bedrooms upstairs, all carpeted and with built-in robes
- Master bedroom boasts a walk-in robe and an en-suite

[morton.com.au](http://morton.com.au)

### View

As advertised or by appointment

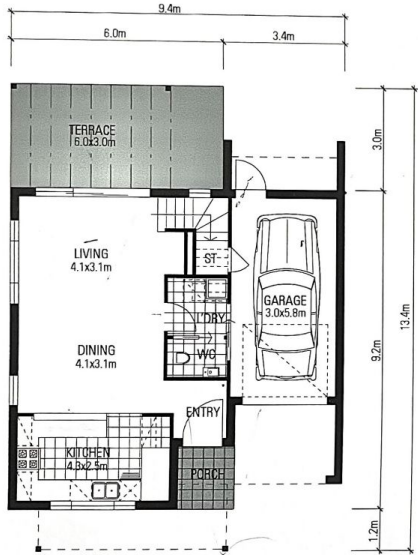
### Agent

**Nevena Petrovic**

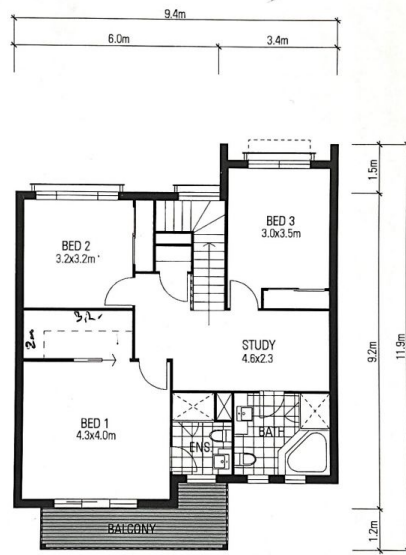
 0428 835 910

 [nevena@morton.com.au](mailto:nevena@morton.com.au)

Site plan not to scale. Facade images are for illustration purposes and are a guide only. Please refer to detailed landscaping plans for specific inclusions. Dimensions are approximate. The information is subject to change without notice. Please note that whilst every care is taken to ensure that the contents are correct, the information is to be used as a guide and purchasers must rely on their own enquiries, January 2016.



Ground Floor Plan



First Floor Plan



Site Plan

